

## Product Datasheet

### ISG15 Antibody (N-term) (orb1938148)

|                            |  |
|----------------------------|--|
| <b>Catalog Number</b>      | orb1938148   |
| <b>Category</b>            | Antibodies   |
| <b>Description</b>         | Purified Rabbit Polyclonal Antibody (Pab)  |
| <b>Target</b>              | ISG15 (HGNC:4053)  |
| <b>Clonality</b>           | Polyclonal   |
| <b>Species/Host</b>        | Rabbit   |
| <b>Isotype</b>             | Rabbit IgG   |
| <b>Conjugation</b>         | Unconjugated   |
| <b>Reactivity</b>          | Human  |
| <b>Form/Appearance</b>     | Purified polyclonal antibody supplied in PBS with 0.09% (W/V) sodium azide. This antibody is purified through a protein A column, followed by peptide affinity purification.                   |
| <b>Immunogen</b>           | This ISG15 antibody is generated from rabbits immunized with a KLH conjugated synthetic peptide between 31-61 amino acids from the N-terminal region of human ISG15. Antigen Region: 31-61 aa. |
| <b>UniProt ID</b>          | <b>P05161</b>  |
| <b>MW</b>                  | 17888 Da   |
| <b>Tested applications</b> | IHC-P, WB  |
| <b>Dilution range</b>      | WB - 1:1000, IHC-P - 1:50-100  |
| <b>Antibody Type</b>       | Primary Antibody   |

**Biorbyt Ltd.**

7 Signet Court, Swann Road  
Cambridge  
CB5 8LA  
United Kingdom

Email: [info@biorbyt.com](mailto:info@biorbyt.com), [support@biorbyt.com](mailto:support@biorbyt.com)

Phone: [+44 \(0\)1223 859353](tel:+44(0)1223859353) | Fax: [+1 \(415\) 651-8558](tel:+1(415)651-8558)

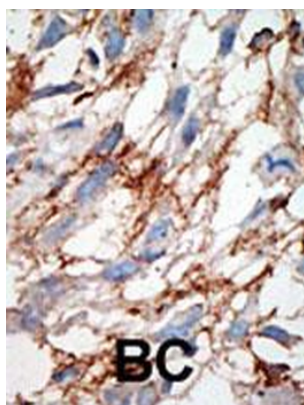
**Biorbyt LLC**

68 TW Alexander Drive  
Research Triangle Park  
Durham  
NC 27713  
United States

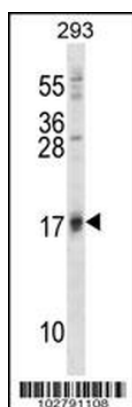
Email: [info@biorbyt.com](mailto:info@biorbyt.com), [support@biorbyt.com](mailto:support@biorbyt.com)

Phone: [+1 \(415\) 906-5211](tel:+1(415)906-5211) | Fax: [+1 \(415\) 651-8558](tel:+1(415)651-8558)

|                        |  |
|------------------------|--|
| <b>Clone Number</b>    | BTD24913   |
| <b>Storage</b>         | Maintain refrigerated at 2-8°C for up to 2 weeks. For long term storage store at -20°C in small aliquots to prevent freeze-thaw cycles |
| <b>Note</b>            | For research use only  |
| <b>NCBI</b>            | <b>NP_005092.1</b>   |
| <b>Expiration Date</b> | 12 months from date of receipt.  |



Formalin-fixed and paraffin-embedded human cancer tissue reacted with the primary antibody, which was peroxidase-conjugated to the secondary antibody, followed by DAB staining. This data demonstrates the use of this antibody for immunohistochemistry; clinical relevance has not been evaluated. BC = breast carcinoma; HC = hepatocarcinoma.



ISG15 Antibody (A46) western blot analysis in 293 cell line lysates (35 ug/lane). This demonstrates the ISG15 antibody detected the ISG15 protein (arrow).

**Biorbyt Ltd.**

7 Signet Court, Swann Road  
Cambridge  
CB5 8LA  
United Kingdom

Email: [info@biorbyt.com](mailto:info@biorbyt.com), [support@biorbyt.com](mailto:support@biorbyt.com)

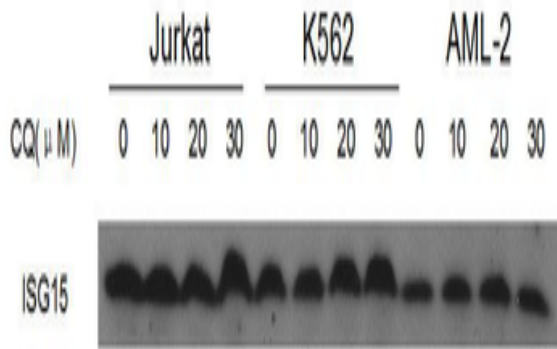
Phone: +44 (0)1223 859353 | Fax: +1 (415) 651-8558

**Biorbyt LLC**

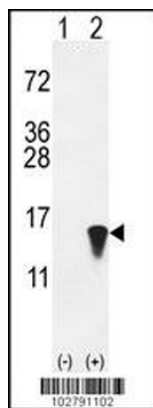
68 TW Alexander Drive  
Research Triangle Park  
Durham  
NC 27713  
United States

Email: [info@biorbyt.com](mailto:info@biorbyt.com), [support@biorbyt.com](mailto:support@biorbyt.com)

Phone: +1 (415) 906-5211 | Fax: +1 (415) 651-8558



ISG15 Antibody western blot analysis in Jurkat K562 and AML-2 cell line lysates treated with a small molecular of 0-10-20-30uM for 24 hours.



Western blot analysis of ISG15 (arrow) using rabbit polyclonal hISG15-A46. 293 cell lysates (2 ug/lane) either nontransfected (Lane 1) or transiently transfected with the ISG15 gene (Lane 2).

## Biorbyt Ltd.

7 Signet Court, Swann Road  
Cambridge  
CB5 8LA  
United Kingdom

Email: [info@biorbyt.com](mailto:info@biorbyt.com), [support@biorbyt.com](mailto:support@biorbyt.com)

Phone: +44 (0)1223 859353 | Fax: +1 (415) 651-8558

## Biorbyt LLC

68 TW Alexander Drive  
Research Triangle Park  
Durham  
NC 27713  
United States

Email: [info@biorbyt.com](mailto:info@biorbyt.com), [support@biorbyt.com](mailto:support@biorbyt.com)

Phone: +1 (415) 906-5211 | Fax: +1 (415) 651-8558