

Product Datasheet

MMP1 Antibody (Center) (orb1937894)

Catalog Number	orb1937894
Category	Antibodies
Description	Affinity Purified Rabbit Polyclonal Antibody (Pab)
Target	MMP1
Clonality	Polyclonal
Species/Host	Rabbit
Isotype	Rabbit IgG
Conjugation	Unconjugated
Reactivity	Human
Form/Appearance	Purified polyclonal antibody supplied in PBS with 0.09% (W/V) sodium azide. This antibody is purified through a protein A column, followed by peptide affinity purification.
Immunogen	This MMP1 antibody is generated from rabbits immunized with a KLH conjugated synthetic peptide between 317-347 amino acids from the Central region of human MMP1. Antigen Region: 317-347 aa.
UniProt ID	P03956
MW	54007 Da
Tested applications	IF, IHC-P, WB
Dilution range	IF - 1:10-50, WB - 1:1000, IHC-P - 1:50-100
Antibody Type	Primary Antibody

Biorbyt Ltd.

7 Signet Court, Swann Road
Cambridge
CB5 8LA
United Kingdom

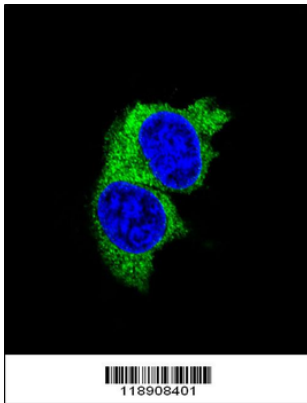
Email: info@biorbyt.com, support@biorbyt.com
Phone: [+44 \(0\)1223 859353](tel:+44(0)1223859353) | Fax: [+1 \(415\) 651-8558](tel:+1(415)651-8558)

Biorbyt LLC

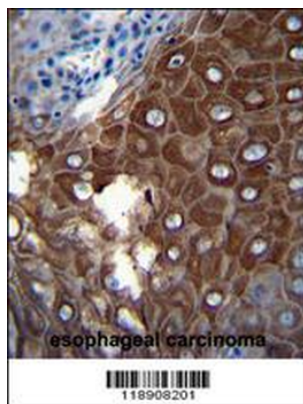
68 TW Alexander Drive
Research Triangle Park
Durham
NC 27713
United States

Email: info@biorbyt.com, support@biorbyt.com
Phone: [+1 \(415\) 906-5211](tel:+1(415)906-5211) | Fax: [+1 \(415\) 651-8558](tel:+1(415)651-8558)

Storage	Maintain refrigerated at 2-8°C for up to 2 weeks. For long term storage store at -20°C in small aliquots to prevent freeze-thaw cycles
Note	For research use only
NCBI	NP_002412.1
Expiration Date	12 months from date of receipt.



Confocal immunofluorescent analysis of MMP1 Antibody (Center) with MDA-MB231 cell followed by Alexa Fluor 488-conjugated goat anti-rabbit IgG (green). DAPI was used to stain the cell nuclear (blue).



MMP1 Antibody (Center) immunohistochemistry analysis in formalin fixed and paraffin embedded human esophageal carcinoma followed by peroxidase conjugation of the secondary antibody and DAB staining. This data demonstrates the use of MMP1 Antibody (Center) for immunohistochemistry. Clinical relevance has not been evaluated.

Biorbyt Ltd.

7 Signet Court, Swann Road
Cambridge
CB5 8LA
United Kingdom

Email: info@biorbyt.com, support@biorbyt.com

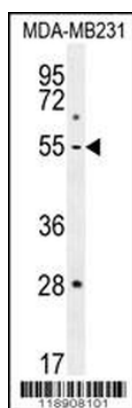
Phone: +44 (0)1223 859353 | Fax: +1 (415) 651-8558

Biorbyt LLC

68 TW Alexander Drive
Research Triangle Park
Durham
NC 27713
United States

Email: info@biorbyt.com, support@biorbyt.com

Phone: +1 (415) 906-5211 | Fax: +1 (415) 651-8558



MMP1 Antibody (Center) western blot analysis in MDA-MB231 cell line lysates (35 ug/lane). This demonstrates the MMP1 antibody detected the MMP1 protein (arrow).

Biorbyt Ltd.

7 Signet Court, Swann Road
Cambridge
CB5 8LA
United Kingdom

Email: info@biorbyt.com, support@biorbyt.com

Phone: [+44 \(0\)1223 859353](tel:+44(0)1223859353) | Fax: [+1 \(415\) 651-8558](tel:+1(415)651-8558)

Biorbyt LLC

68 TW Alexander Drive
Research Triangle Park
Durham
NC 27713
United States

Email: info@biorbyt.com, support@biorbyt.com

Phone: [+1 \(415\) 906-5211](tel:+1(415)906-5211) | Fax: [+1 \(415\) 651-8558](tel:+1(415)651-8558)