

Product Datasheet

SPECC1 Antibody (Center) (orb1937711)

Catalog Number	orb1937711
Category	Antibodies
Description	Affinity Purified Rabbit Polyclonal Antibody (Pab)
Target	SPECC1L
Clonality	Polyclonal
Species/Host	Rabbit
Isotype	Rabbit IgG
Conjugation	Unconjugated
Reactivity	Human, Mouse
Predicted Reactivity	Zebrafish
Form/Appearance	Purified polyclonal antibody supplied in PBS with 0.09% (W/V) sodium azide. This antibody is purified through a protein A column, followed by peptide affinity purification.
Immunogen	This SPECC1 antibody is generated from rabbits immunized with a KLH conjugated synthetic peptide between 705-733 amino acids from the Central region of human SPECC1. Antigen Region: 705-733 aa.
UniProt ID	Q69YQ0
MW	124544 Da
Tested applications	FC, IF, IHC-P, WB
Dilution range	IF - 1:10-50, WB - 1:1000, IHC-P - 1:10-50, FC - 1:10-50

Biorbyt Ltd.

7 Signet Court, Swann Road
Cambridge
CB5 8LA
United Kingdom

Email: info@biorbyt.com, support@biorbyt.com

Phone: [+44 \(0\)1223 859353](tel:+44(0)1223859353) | Fax: [+1 \(415\) 651-8558](tel:+1(415)651-8558)

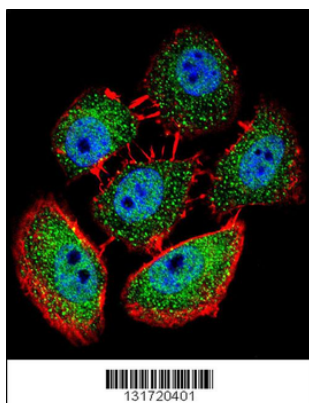
Biorbyt LLC

68 TW Alexander Drive
Research Triangle Park
Durham
NC 27713-2847
United States

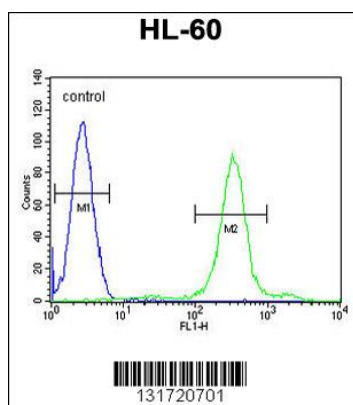
Email: info@biorbyt.com, support@biorbyt.com

Phone: [+1 \(415\) 906-5211](tel:+1(415)906-5211) | Fax: [+1 \(415\) 651-8558](tel:+1(415)651-8558)

Antibody Type	Primary Antibody
Storage	Maintain refrigerated at 2-8°C for up to 2 weeks. For long term storage store at -20°C in small aliquots to prevent freeze-thaw cycles
Note	For research use only
NCBI	NP_056145.4, NP_001241661.2
Expiration Date	12 months from date of receipt.



Confocal immunofluorescent analysis of SPECC1 Antibody (Center) with U-251MG cell followed by Alexa Fluor 488-conjugated goat anti-rabbit IgG (green). Actin filaments have been labeled with Alexa Fluor555 phalloidin (red). DAPI was used to stain the cell nuclear (blue).



SPECC1 Antibody (Center) flow cytometric analysis of HL-60 cells (right histogram) compared to a negative control cell (left histogram). FITC-conjugated goat-anti-rabbit secondary antibodies were used for the analysis.

Biorbyt Ltd.

7 Signet Court, Swann Road
Cambridge
CB5 8LA
United Kingdom

Email: info@biorbyt.com, support@biorbyt.com

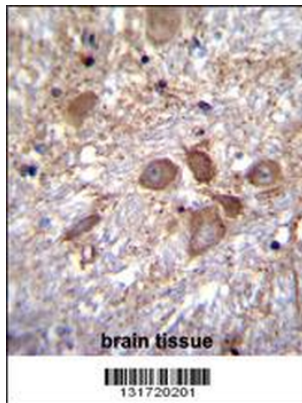
Phone: +44 (0)1223 859353 | Fax: +1 (415) 651-8558

Biorbyt LLC

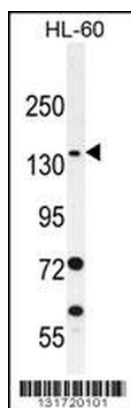
68 TW Alexander Drive
Research Triangle Park
Durham
NC 27713-2847
United States

Email: info@biorbyt.com, support@biorbyt.com

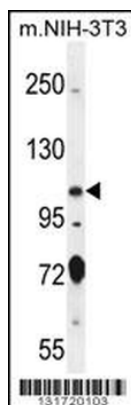
Phone: +1 (415) 906-5211 | Fax: +1 (415) 651-8558



SPECC1 Antibody (Center) immunohistochemistry analysis in formalin fixed and paraffin embedded human brain tissue followed by peroxidase conjugation of the secondary antibody and DAB staining. This data demonstrates the use of SPECC1 Antibody (Center) for immunohistochemistry. Clinical relevance has not been evaluated.



SPECC1 Antibody (Center) western blot analysis in HL-60 cell line lysates (35 ug/lane). This demonstrates the SPECC1 antibody detected the SPECC1 protein (arrow).



SPECC1 Antibody (Center) western blot analysis in mouse NIH-3T3 cell line lysates (35 ug/lane). This demonstrates the SPECC1 antibody detected the SPECC1 protein (arrow).

Biorbyt Ltd.

7 Signet Court, Swann Road
Cambridge
CB5 8LA
United Kingdom

Email: info@biorbyt.com, support@biorbyt.com

Phone: +44 (0)1223 859353 | Fax: +1 (415) 651-8558

Biorbyt LLC

68 TW Alexander Drive
Research Triangle Park
Durham
NC 27713-2847
United States

Email: info@biorbyt.com, support@biorbyt.com

Phone: +1 (415) 906-5211 | Fax: +1 (415) 651-8558