

Product Datasheet

SUMO1 Antibody (C-term) (orb1937645)

Catalog Number	orb1937645
Category	Antibodies
Description	Purified Rabbit Polyclonal Antibody (Pab)
Target	SUMO1
Clonality	Polyclonal
Species/Host	Rabbit
Isotype	Rabbit IgG
Conjugation	Unconjugated
Reactivity	Human
Predicted Reactivity	Mouse, Porcine, Rat
Form/Appearance	Purified polyclonal antibody supplied in PBS with 0.09% (W/V) sodium azide. This antibody is prepared by Saturated Ammonium Sulfate (SAS) precipitation followed by dialysis against PBS.
Immunogen	This SUMO1 antibody is generated from rabbits immunized with a KLH conjugated synthetic peptide between 55-86 amino acids from the C-terminal region of human SUMO1. Antigen Region: 55-86 aa.
UniProt ID	P63165
MW	11557 Da
Tested applications	FC, IHC-P, WB
Dilution range	WB - 1:1000, IHC-P - 1:50-100, FC - 1:10-50

Biorbyt Ltd.

7 Signet Court, Swann Road
Cambridge
CB5 8LA
United Kingdom

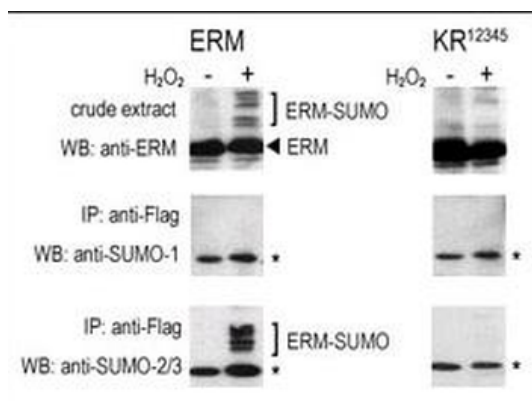
Email: info@biorbyt.com, support@biorbyt.com
Phone: [+44 \(0\)1223 859353](tel:+44(0)1223859353) | Fax: [+1 \(415\) 651-8558](tel:+1(415)651-8558)

Biorbyt LLC

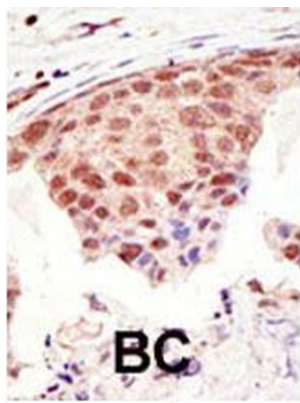
68 TW Alexander Drive
Research Triangle Park
Durham
NC 27713-2847
United States

Email: info@biorbyt.com, support@biorbyt.com
Phone: [+1 \(415\) 906-5211](tel:+1(415)906-5211) | Fax: [+1 \(415\) 651-8558](tel:+1(415)651-8558)

Antibody Type	Primary Antibody
Storage	Maintain refrigerated at 2-8°C for up to 2 weeks. For long term storage store at -20°C in small aliquots to prevent freeze-thaw cycles
Note	For research use only
NCBI	NP_001005782.1 , NP_001005781.1 , NP_003343.1
Expiration Date	12 months from date of receipt.



COS-7 cells were transfected for 24 hrs with a plasmid expressing FLAG-ERM (left panels) or FLAG-ERM KR12345 (right panels). Untreated (-) and H₂O₂-treated (+) cells were collected for immunoblot analysis. Top panels: cell lysates probed by western blot (WB) with an anti-ERM Antibody. Center panels: cell lysates immunoprecipitated (IP) with an anti-FLAG antibody followed by WB with SUMO-1 Antibody. Bottom panels: cell lysates immunoprecipitated with an anti-FLAG antibody followed by WB with SUMO-2/3 Antibody. (*) represents immunoprecipitated ERM-like forms recognized by anti-SUMO antibodies.



Formalin-fixed and paraffin-embedded human cancer tissue reacted with the primary antibody, which was peroxidase-conjugated to the secondary antibody, followed by DAB staining. This data demonstrates the use of this antibody for immunohistochemistry; clinical relevance has not been evaluated. BC = breast carcinoma; HC = hepatocarcinoma.

Biorbyt Ltd.

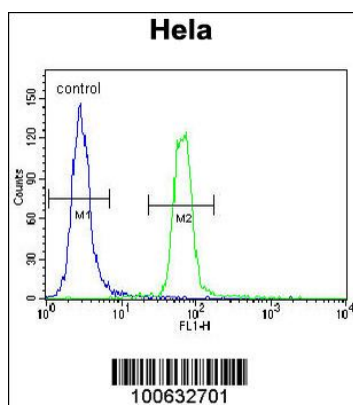
7 Signet Court, Swann Road
Cambridge
CB5 8LA
United Kingdom

Email: info@biorbyt.com, support@biorbyt.com
Phone: +44 (0)1223 859353 | Fax: +1 (415) 651-8558

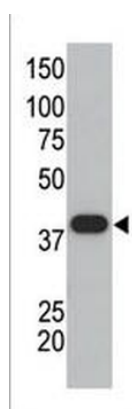
Biorbyt LLC

68 TW Alexander Drive
Research Triangle Park
Durham
NC 27713-2847
United States

Email: info@biorbyt.com, support@biorbyt.com
Phone: +1 (415) 906-5211 | Fax: +1 (415) 651-8558



SUMO1 Antibody (C-term) flow cytometric analysis of HeLa cells (right histogram) compared to a negative control cell (left histogram). FITC-conjugated goat-anti-rabbit secondary antibodies were used for the analysis.



The anti-SUMO1 polyclonal antibody is used in Western blot to detect GST-SUMO1 fusion protein.

Biorbyt Ltd.

7 Signet Court, Swann Road
Cambridge
CB5 8LA
United Kingdom

Email: info@biorbyt.com, support@biorbyt.com
Phone: +44 (0)1223 859353 | Fax: +1 (415) 651-8558

Biorbyt LLC

68 TW Alexander Drive
Research Triangle Park
Durham
NC 27713-2847
United States

Email: info@biorbyt.com, support@biorbyt.com
Phone: +1 (415) 906-5211 | Fax: +1 (415) 651-8558