

## Product Datasheet

### Desmin Antibody (C-term) (orb1935955)

|                             |  |
|-----------------------------|--|
| <b>Catalog Number</b>       | orb1935955   |
| <b>Category</b>             | Antibodies   |
| <b>Description</b>          | Affinity Purified Rabbit Polyclonal Antibody (Pab)   |
| <b>Target</b>               | DES  |
| <b>Clonality</b>            | Polyclonal   |
| <b>Species/Host</b>         | Rabbit   |
| <b>Isotype</b>              | Rabbit IgG   |
| <b>Conjugation</b>          | Unconjugated   |
| <b>Reactivity</b>           | Human  |
| <b>Predicted Reactivity</b> | Mouse, Porcine, Rat  |
| <b>Form/Appearance</b>      | Purified polyclonal antibody supplied in PBS with 0.09% (W/V) sodium azide. This antibody is purified through a protein A column, followed by peptide affinity purification.                         |
| <b>Immunogen</b>            | This Desmin antibody is generated from rabbits immunized with a KLH conjugated synthetic peptide between 332-359 amino acids from the C-terminal region of human Desmin. Antigen Region: 332-359 aa. |
| <b>UniProt ID</b>           | <b>P17661</b>  |
| <b>MW</b>                   | 53536 Da   |
| <b>Tested applications</b>  | IHC-P, WB  |
| <b>Dilution range</b>       | WB - 1:1000, IHC-P - 1:10-50   |

**Biorbyt Ltd.**

7 Signet Court, Swann Road  
Cambridge  
CB5 8LA  
United Kingdom

Email: [info@biorbyt.com](mailto:info@biorbyt.com), [support@biorbyt.com](mailto:support@biorbyt.com)

Phone: [+44 \(0\)1223 859353](tel:+44(0)1223859353) | Fax: [+1 \(415\) 651-8558](tel:+1(415)651-8558)

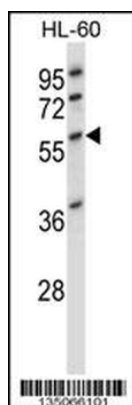
**Biorbyt LLC**

68 TW Alexander Drive  
Research Triangle Park  
Durham  
NC 27713  
United States

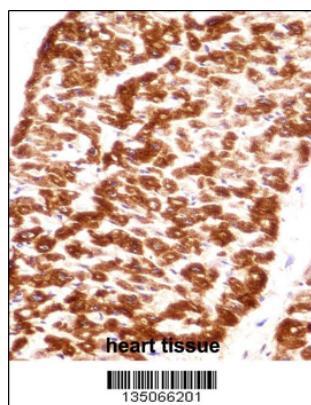
Email: [info@biorbyt.com](mailto:info@biorbyt.com), [support@biorbyt.com](mailto:support@biorbyt.com)

Phone: [+1 \(415\) 906-5211](tel:+1(415)906-5211) | Fax: [+1 \(415\) 651-8558](tel:+1(415)651-8558)

|                        |  |
|------------------------|--|
| <b>Antibody Type</b>   | Primary Antibody   |
| <b>Storage</b>         | Maintain refrigerated at 2-8°C for up to 2 weeks. For long term storage store at -20°C in small aliquots to prevent freeze-thaw cycles |
| <b>Note</b>            | For research use only  |
| <b>NCBI</b>            | <b>NP_001918.3</b>   |
| <b>Expiration Date</b> | 12 months from date of receipt.  |



DES/Desmin (Muscle Cell Marker) Antibody (C-term) western blot analysis in HL-60 cell line lysates (35 ug/lane). This demonstrates the DES antibody detected the DES protein (arrow).



DES/Desmin (Muscle Cell Marker) Antibody (C-term) immunohistochemistry analysis in formalin fixed and paraffin embedded human heart tissue followed by peroxidase conjugation of the secondary antibody and DAB staining. This data demonstrates the use of DES/Desmin (Muscle Cell Marker) Antibody (C-term) for immunohistochemistry. Clinical relevance has not been evaluated.

**Biorbyt Ltd.**

7 Signet Court, Swann Road  
Cambridge  
CB5 8LA  
United Kingdom

Email: [info@biorbyt.com](mailto:info@biorbyt.com), [support@biorbyt.com](mailto:support@biorbyt.com)

Phone: +44 (0)1223 859353 | Fax: +1 (415) 651-8558

**Biorbyt LLC**

68 TW Alexander Drive  
Research Triangle Park  
Durham  
NC 27713  
United States

Email: [info@biorbyt.com](mailto:info@biorbyt.com), [support@biorbyt.com](mailto:support@biorbyt.com)

Phone: +1 (415) 906-5211 | Fax: +1 (415) 651-8558