

Product Datasheet

Mouse Map2k3 Antibody (Center) (orb1935806)

Catalog Number	orb1935806
Category	Antibodies
Description	Affinity Purified Rabbit Polyclonal Antibody (Pab)
Target	Map2k3
Clonality	Polyclonal
Species/Host	Rabbit
Isotype	Rabbit IgG
Conjugation	Unconjugated
Reactivity	Human, Mouse
Form/Appearance	Purified polyclonal antibody supplied in PBS with 0.09% (W/V) sodium azide. This antibody is purified through a protein A column, followed by peptide affinity purification.
Immunogen	This Mouse Map2k3 antibody is generated from rabbits immunized with a KLH conjugated synthetic peptide between 132-160 amino acids from the Central region of mouse Map2k3. Antigen Region: 132-160 aa.
UniProt ID	O09110
MW	39296 Da
Tested applications	WB
Dilution range	WB - 1:1000
Antibody Type	Primary Antibody

Biorbyt Ltd.

7 Signet Court, Swann Road
Cambridge
CB5 8LA
United Kingdom

Email: info@biorbyt.com, support@biorbyt.com

Phone: [+44 \(0\)1223 859353](tel:+44(0)1223859353) | Fax: [+1 \(415\) 651-8558](tel:+1(415)651-8558)

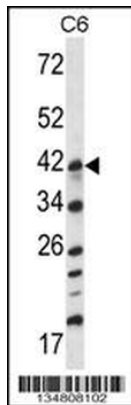
Biorbyt LLC

68 TW Alexander Drive
Research Triangle Park
Durham
NC 27713
United States

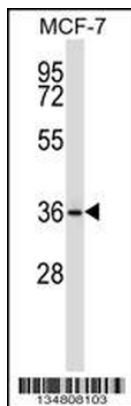
Email: info@biorbyt.com, support@biorbyt.com

Phone: [+1 \(415\) 906-5211](tel:+1(415)906-5211) | Fax: [+1 \(415\) 651-8558](tel:+1(415)651-8558)

Storage	Maintain refrigerated at 2-8°C for up to 2 weeks. For long term storage store at -20°C in small aliquots to prevent freeze-thaw cycles
Note	For research use only
NCBI	NP_032954.1
Expiration Date	12 months from date of receipt.



Mouse Map2k3 Antibody (Center) western blot analysis in C6 cell line lysates (35 ug/lane). This demonstrates the Map2k3 antibody detected the Map2k3 protein (arrow).



Mouse Map2k3 Antibody (Center) western blot analysis in MCF-7 cell line lysates (35 ug/lane). This demonstrates the Map2k3 antibody detected the Map2k3 protein (arrow).

Biorbyt Ltd.

7 Signet Court, Swann Road
Cambridge
CB5 8LA
United Kingdom

Email: info@biorbyt.com, support@biorbyt.com

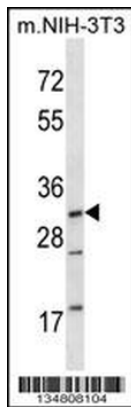
Phone: +44 (0)1223 859353 | Fax: +1 (415) 651-8558

Biorbyt LLC

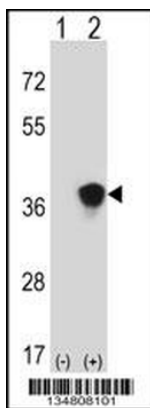
68 TW Alexander Drive
Research Triangle Park
Durham
NC 27713
United States

Email: info@biorbyt.com, support@biorbyt.com

Phone: +1 (415) 906-5211 | Fax: +1 (415) 651-8558



Mouse Map2k3 Antibody (Center) western blot analysis in mouse NIH-3T3 cell line lysates (35 ug/lane). This demonstrates the Map2k3 antibody detected the Map2k3 protein (arrow).



Western blot analysis of Map2k3 (arrow) using rabbit polyclonal Mouse Map2k3 Antibody (Center). 293 cell lysates (2 ug/lane) either nontransfected (Lane 1) or transiently transfected (Lane 2) with the Map2k3 gene.

Biorbyt Ltd.

7 Signet Court, Swann Road
Cambridge
CB5 8LA
United Kingdom

Email: info@biorbyt.com, support@biorbyt.com

Phone: +44 (0)1223 859353 | Fax: +1 (415) 651-8558

Biorbyt LLC

68 TW Alexander Drive
Research Triangle Park
Durham
NC 27713
United States

Email: info@biorbyt.com, support@biorbyt.com

Phone: +1 (415) 906-5211 | Fax: +1 (415) 651-8558