

Product Datasheet

L1CAM Antibody (C-term) (orb1935060)

Catalog Number	orb1935060
Category	Antibodies
Description	Affinity Purified Rabbit Polyclonal Antibody (Pab)
Target	L1CAM
Clonality	Polyclonal
Species/Host	Rabbit
Isotype	Rabbit IgG
Conjugation	Unconjugated
Reactivity	Human, Mouse
Predicted Reactivity	Rat
Form/Appearance	Purified polyclonal antibody supplied in PBS with 0.09% (W/V) sodium azide. This antibody is purified through a protein A column, followed by peptide affinity purification.
Immunogen	This L1CAM antibody is generated from rabbits immunized with a KLH conjugated synthetic peptide between 1154-1182 amino acids from the C-terminal region of human L1CAM. Antigen Region: 1154-1182 aa.
UniProt ID	P32004
MW	140003 Da
Tested applications	IHC-P, WB
Dilution range	IHC-P - 1-600, WB - 1:8000

Biorbyt Ltd.

7 Signet Court, Swann Road
Cambridge
CB5 8LA
United Kingdom

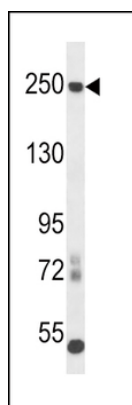
Email: info@biorbyt.com, support@biorbyt.com
Phone: [+44 \(0\)1223 859353](tel:+44(0)1223859353) | Fax: [+1 \(415\) 651-8558](tel:+1(415)651-8558)

Biorbyt LLC

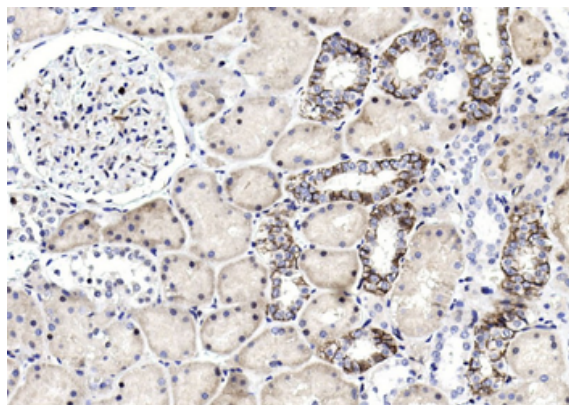
68 TW Alexander Drive
Research Triangle Park
Durham
NC 27713-2847
United States

Email: info@biorbyt.com, support@biorbyt.com
Phone: [+1 \(415\) 906-5211](tel:+1(415)906-5211) | Fax: [+1 \(415\) 651-8558](tel:+1(415)651-8558)

Antibody Type	Primary Antibody
Storage	Maintain refrigerated at 2-8°C for up to 2 weeks. For long term storage store at -20°C in small aliquots to prevent freeze-thaw cycles
Note	For research use only
NCBI	NP_076493.1 , NP_001265045.1 , NP_001137435.1 , NP_000416.1
Expiration Date	12 months from date of receipt.



L1CAM Antibody (C-term) western blot analysis in mouse cerebellum tissue lysates (35 ug/lane). This demonstrates the L1CAM antibody detected the L1CAM protein (arrow).



Immunohistochemical analysis of paraffin-embedded Human kidney section using Pink1. Diluted at 1~600 dilution. A undiluted biotinylated goat polyvalent antibody was used as the secondary, followed by DAB staining.

Biorbyt Ltd.

7 Signet Court, Swann Road
Cambridge
CB5 8LA
United Kingdom

Email: info@biorbyt.com, support@biorbyt.com

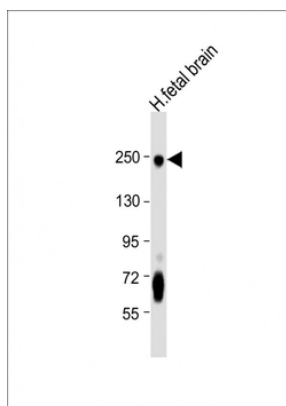
Phone: [+44 \(0\)1223 859353](tel:+44(0)1223859353) | Fax: [+1 \(415\) 651-8558](tel:+1(415)651-8558)

Biorbyt LLC

68 TW Alexander Drive
Research Triangle Park
Durham
NC 27713-2847
United States

Email: info@biorbyt.com, support@biorbyt.com

Phone: [+1 \(415\) 906-5211](tel:+1(415)906-5211) | Fax: [+1 \(415\) 651-8558](tel:+1(415)651-8558)



Anti-L1CAM Antibody (C-term) at 1: 8000 dilution + human fetal brain lysate. Lysates/proteins at 20 µg per lane. Secondary Goat Anti-Rabbit IgG, (H+L), Peroxidase conjugated at 1/10000 dilution. Predicted band size: 140 kDa. Blocking/Dilution buffer: 5% NFDM/TBST.

Biorbyt Ltd.

7 Signet Court, Swann Road
Cambridge
CB5 8LA
United Kingdom

Email: info@biorbyt.com, support@biorbyt.com

Phone: [+44 \(0\)1223 859353](tel:+44(0)1223859353) | Fax: [+1 \(415\) 651-8558](tel:+1(415)651-8558)

Biorbyt LLC

68 TW Alexander Drive
Research Triangle Park
Durham
NC 27713-2847
United States

Email: info@biorbyt.com, support@biorbyt.com

Phone: [+1 \(415\) 906-5211](tel:+1(415)906-5211) | Fax: [+1 \(415\) 651-8558](tel:+1(415)651-8558)