

Product Datasheet

ATF3 Antibody (C-term) (orb1934770)

Catalog Number	orb1934770
Category	Antibodies
Description	Affinity Purified Rabbit Polyclonal Antibody (Pab)
Target	ATF3 {ECO:0000303 PubMed:7515060, ECO:0000312 HGNC:HGNC:785}
Clonality	Polyclonal
Species/Host	Rabbit
Isotype	Rabbit IgG
Conjugation	Unconjugated
Reactivity	Human
Predicted Reactivity	Mouse, Rat
Form/Appearance	Purified polyclonal antibody supplied in PBS with 0.09% (W/V) sodium azide. This antibody is purified through a protein A column, followed by peptide affinity purification.
Immunogen	This ATF3 antibody is generated from rabbits immunized with a KLH conjugated synthetic peptide between 140-168 amino acids from the C-terminal region of human ATF3. Antigen Region: 140-168 aa.
UniProt ID	P18847
MW	20576 Da
Tested applications	FC, WB
Dilution range	WB - 1:1000, FC - 1:10-50

Biorbyt Ltd.

7 Signet Court, Swann Road
Cambridge
CB5 8LA
United Kingdom

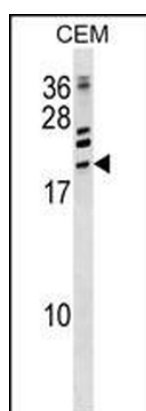
Email: info@biorbyt.com, support@biorbyt.com
Phone: [+44 \(0\)1223 859353](tel:+44(0)1223859353) | Fax: [+1 \(415\) 651-8558](tel:+1(415)651-8558)

Biorbyt LLC

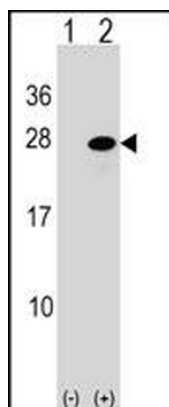
68 TW Alexander Drive
Research Triangle Park
Durham
NC 27713
United States

Email: info@biorbyt.com, support@biorbyt.com
Phone: [+1 \(415\) 906-5211](tel:+1(415)906-5211) | Fax: [+1 \(415\) 651-8558](tel:+1(415)651-8558)

Antibody Type	Primary Antibody
Storage	Maintain refrigerated at 2-8°C for up to 2 weeks. For long term storage store at -20°C in small aliquots to prevent freeze-thaw cycles
Note	For research use only
NCBI	NP_001193415.1 , NP_001193417.2 , NP_001193413.2 , NP_001025458.1 , NP_001035709.1 , NP_001665.1
Expiration Date	12 months from date of receipt.



ATF3 Antibody (C-term) western blot analysis in CEM cell line lysates (35 ug/lane). This demonstrates the ATF3 antibody detected the ATF3 protein (arrow).



Western blot analysis of ATF3 (arrow) using rabbit polyclonal ATF3 Antibody (C-term). 293 cell lysates (2 ug/lane) either nontransfected (Lane 1) or transiently transfected (Lane 2) with the ATF3 gene.

Biorbyt Ltd.

7 Signet Court, Swann Road
Cambridge
CB5 8LA
United Kingdom

Email: info@biorbyt.com, support@biorbyt.com

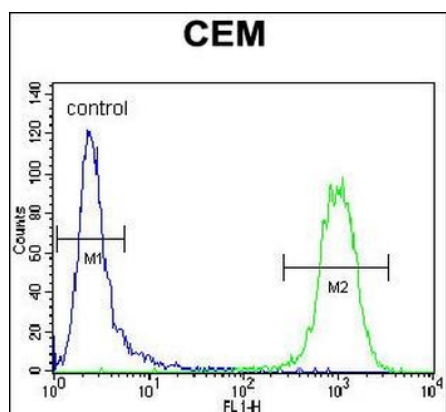
Phone: +44 (0)1223 859353 | Fax: +1 (415) 651-8558

Biorbyt LLC

68 TW Alexander Drive
Research Triangle Park
Durham
NC 27713
United States

Email: info@biorbyt.com, support@biorbyt.com

Phone: +1 (415) 906-5211 | Fax: +1 (415) 651-8558



ATF3 Antibody (C-term) flow cytometric analysis of CEM cells (right histogram) compared to a negative control cell (left histogram). FITC-conjugated goat-anti-rabbit secondary antibodies were used for the analysis.

Biorbyt Ltd.

7 Signet Court, Swann Road
Cambridge
CB5 8LA
United Kingdom

Email: info@biorbyt.com, support@biorbyt.com

Phone: +44 (0)1223 859353 | Fax: +1 (415) 651-8558

Biorbyt LLC

68 TW Alexander Drive
Research Triangle Park
Durham
NC 27713
United States

Email: info@biorbyt.com, support@biorbyt.com

Phone: +1 (415) 906-5211 | Fax: +1 (415) 651-8558