

Product Datasheet

ERLIN2 Antibody (C-term) (orb1933051)

Catalog Number	orb1933051
Category	Antibodies
Description	Affinity Purified Rabbit Polyclonal Antibody (Pab)
Target	ERLIN2
Clonality	Polyclonal
Species/Host	Rabbit
Isotype	Rabbit IgG
Conjugation	Unconjugated
Reactivity	Human, Mouse, Rat
Form/Appearance	Purified polyclonal antibody supplied in PBS with 0.09% (W/V) sodium azide. This antibody is purified through a protein A column, followed by peptide affinity purification.
Immunogen	This ERLIN2 antibody is generated from rabbits immunized with a KLH conjugated synthetic peptide between 307-333 amino acids from the C-terminal region of human ERLIN2. Antigen Region: 307-333 aa.
UniProt ID	O94905
MW	37840 Da
Tested applications	WB
Dilution range	WB - 1:2000
Antibody Type	Primary Antibody

Biorbyt Ltd.

7 Signet Court, Swann Road
Cambridge
CB5 8LA
United Kingdom

Email: info@biorbyt.com, support@biorbyt.com

Phone: [+44 \(0\)1223 859353](tel:+44(0)1223859353) | Fax: [+1 \(415\) 651-8558](tel:+1(415)651-8558)

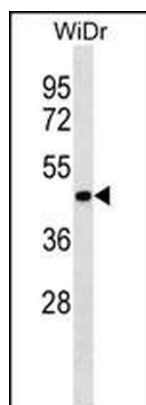
Biorbyt LLC

68 TW Alexander Drive
Research Triangle Park
Durham
NC 27713
United States

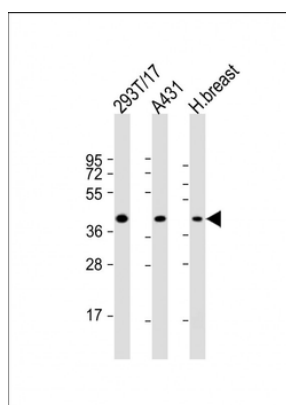
Email: info@biorbyt.com, support@biorbyt.com

Phone: [+1 \(415\) 906-5211](tel:+1(415)906-5211) | Fax: [+1 \(415\) 651-8558](tel:+1(415)651-8558)

Clone Number	BTD50713
Storage	Maintain refrigerated at 2-8°C for up to 2 weeks. For long term storage store at -20°C in small aliquots to prevent freeze-thaw cycles
Note	For research use only
NCBI	NP_001003791.1, NP_001003790.1, NP_009106.1
Expiration Date	12 months from date of receipt.



ERLIN2 Antibody (C-term) western blot analysis in WiDr cell line lysates (35 ug/lane). This demonstrates the ERLIN2 antibody detected the ERLIN2 protein (arrow).



All lanes: Anti-ERLIN2 Antibody (C-term) at 1:2000 dilution. Lane 1: 293T/17 whole cell lysate. Lane 2: A431 whole cell lysate. Lane 3: human breast lysate. Lysates/proteins at 20 µg per lane. Secondary Goat Anti-Rabbit IgG, (H+L), Peroxidase conjugated at 1/10000 dilution. Predicted band size: 38 kDa. Blocking/Dilution buffer: 5% NFDM/TBST.

Biorbyt Ltd.

7 Signet Court, Swann Road
Cambridge
CB5 8LA
United Kingdom

Email: info@biorbyt.com, support@biorbyt.com

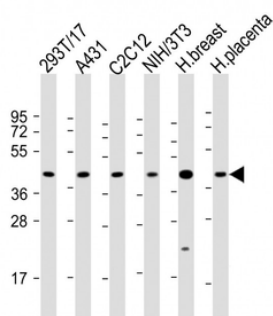
Phone: [+44 \(0\)1223 859353](tel:+44(0)1223859353) | Fax: [+1 \(415\) 651-8558](tel:+1(415)651-8558)

Biorbyt LLC

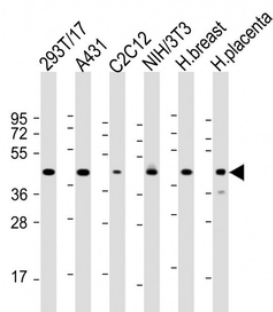
68 TW Alexander Drive
Research Triangle Park
Durham
NC 27713
United States

Email: info@biorbyt.com, support@biorbyt.com

Phone: [+1 \(415\) 906-5211](tel:+1(415)906-5211) | Fax: [+1 \(415\) 651-8558](tel:+1(415)651-8558)



All lanes: Anti-ERLIN2 Antibody (C-term) at 1:2000 dilution. Lane 1: 293T/17 whole cell lysate. Lane 2: A431 whole cell lysate. Lane 3: C2C12 whole cell lysate. Lane 4: NIH/3T3 whole cell lysate. Lane 5: human breast lysate. Lane 6: human placenta lysate. Lysates/proteins at 20 µg per lane. Secondary Goat Anti-Rabbit IgG, (H+L), Peroxidase conjugated at 1/10000 dilution. Predicted band size: 38 kDa. Blocking/Dilution buffer: 5% NFDM/TBST.



All lanes: Anti-ERLIN2 Antibody (C-term) at 1:2000 dilution. Lane 1: 293T/17 whole cell lysate. Lane 2: A431 whole cell lysate. Lane 3: C2C12 whole cell lysate. Lane 4: NIH/3T3 whole cell lysate. Lane 5: human breast lysate. Lane 6: human placenta lysate. Lysates/proteins at 20 µg per lane. Secondary Goat Anti-Rabbit IgG, (H+L), Peroxidase conjugated at 1/10000 dilution. Predicted band size: 38 kDa. Blocking/Dilution buffer: 5% NFDM/TBST.

Biorbyt Ltd.

7 Signet Court, Swann Road
Cambridge
CB5 8LA
United Kingdom

Email: info@biorbyt.com, support@biorbyt.com
Phone: +44 (0)1223 859353 | Fax: +1 (415) 651-8558

Biorbyt LLC

68 TW Alexander Drive
Research Triangle Park
Durham
NC 27713
United States

Email: info@biorbyt.com, support@biorbyt.com
Phone: +1 (415) 906-5211 | Fax: +1 (415) 651-8558