

## Product Datasheet

### **BMPR1A Antibody (N-term) (orb1931939)**

|                            |  |
|----------------------------|--|
| <b>Catalog Number</b>      | orb1931939   |
| <b>Category</b>            | Antibodies   |
| <b>Description</b>         | Purified Rabbit Polyclonal Antibody (Pab)  |
| <b>Target</b>              | BMPR1A   |
| <b>Clonality</b>           | Polyclonal   |
| <b>Species/Host</b>        | Rabbit   |
| <b>Isotype</b>             | Rabbit IgG   |
| <b>Conjugation</b>         | Unconjugated   |
| <b>Reactivity</b>          | Human  |
| <b>Form/Appearance</b>     | Purified polyclonal antibody supplied in PBS with 0.09% (W/V) sodium azide. This antibody is prepared by Saturated Ammonium Sulfate (SAS) precipitation followed by dialysis against PBS.      |
| <b>Immunogen</b>           | This BMPR1A antibody is generated from rabbits immunized with a KLH conjugated synthetic peptide between 1-30 amino acids from the N-terminal region of human BMPR1A. Antigen Region: 1-30 aa. |
| <b>UniProt ID</b>          | <b>P36894</b>  |
| <b>MW</b>                  | 60198 Da   |
| <b>Tested applications</b> | FC, WB   |
| <b>Dilution range</b>      | WB - 1:1000, FC - 1:10-50  |

**Biorbyt Ltd.**

7 Signet Court, Swann Road  
Cambridge  
CB5 8LA  
United Kingdom

Email: [info@biorbyt.com](mailto:info@biorbyt.com), [support@biorbyt.com](mailto:support@biorbyt.com)

Phone: [+44 \(0\)1223 859353](tel:+44(0)1223859353) | Fax: [+1 \(415\) 651-8558](tel:+1(415)651-8558)

**Biorbyt LLC**

68 TW Alexander Drive  
Research Triangle Park  
Durham  
NC 27713-2847  
United States

Email: [info@biorbyt.com](mailto:info@biorbyt.com), [support@biorbyt.com](mailto:support@biorbyt.com)

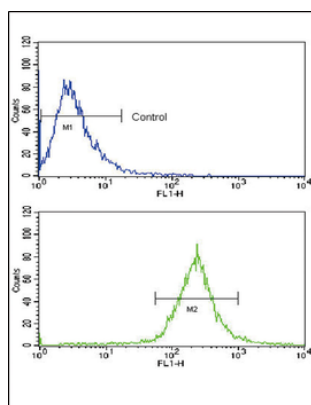
Phone: [+1 \(415\) 906-5211](tel:+1(415)906-5211) | Fax: [+1 \(415\) 651-8558](tel:+1(415)651-8558)

**Storage** Maintain refrigerated at 2-8°C for up to 2 weeks. For long term storage store at -20°C in small aliquots to prevent freeze-thaw cycles

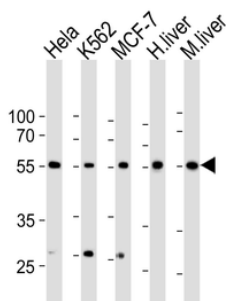
**Note** For research use only

**NCBI** [NP\\_004320.2](#)

**Expiration Date** 12 months from date of receipt.



Flow cytometric analysis of WiDr cells using BMPR1A Antibody (N-term) (bottom histogram) compared to a negative control cell (top histogram). FITC-conjugated goat-anti-rabbit secondary antibodies were used for the analysis.



Western blot analysis of lysates from HeLa, K562, MCF-7 cell line, human liver, mouse liver tissue lysate (from left to right), using BMPR1A Antibody (A13). Diluted at 1:1000 at each lane. A goat anti-rabbit IgG H&L (HRP) at 1:10000 dilution was used as the secondary antibody. Lysates at 35 ug per lane.

**Biorbyt Ltd.**

7 Signet Court, Swann Road  
Cambridge  
CB5 8LA  
United Kingdom

Email: [info@biorbyt.com](mailto:info@biorbyt.com), [support@biorbyt.com](mailto:support@biorbyt.com)  
Phone: +44 (0)1223 859353 | Fax: +1 (415) 651-8558

**Biorbyt LLC**

68 TW Alexander Drive  
Research Triangle Park  
Durham  
NC 27713-2847  
United States

Email: [info@biorbyt.com](mailto:info@biorbyt.com), [support@biorbyt.com](mailto:support@biorbyt.com)  
Phone: +1 (415) 906-5211 | Fax: +1 (415) 651-8558