

Product Datasheet

Phospho-LC3C(S12) Antibody (orb1931205)

| | |
|-----------------------------|--|
| Catalog Number | orb1931205 |
| Category | Antibodies |
| Description | Affinity Purified Rabbit Polyclonal Antibody (Pab) |
| Target | MAP1LC3A |
| Clonality | Polyclonal |
| Species/Host | Rabbit |
| Isotype | Rabbit IgG |
| Conjugation | Unconjugated |
| Reactivity | Human |
| Predicted Reactivity | Mouse, Rat, Zebrafish |
| Form/Appearance | Purified polyclonal antibody supplied in PBS with 0.09% (W/V) sodium azide. This antibody is purified through a protein A column, followed by peptide affinity purification. |
| Immunogen | This LC3C Antibody is generated from rabbits immunized with a KLH conjugated synthetic phosphopeptide corresponding to amino acid residues surrounding S12 of human LC3C. |
| UniProt ID | Q9H492 |
| MW | 14272 Da |
| Tested applications | DOT, WB |
| Dilution range | WB - 1:1000, DB - 1:500 |

Biorbyt Ltd.

7 Signet Court, Swann Road
Cambridge
CB5 8LA
United Kingdom

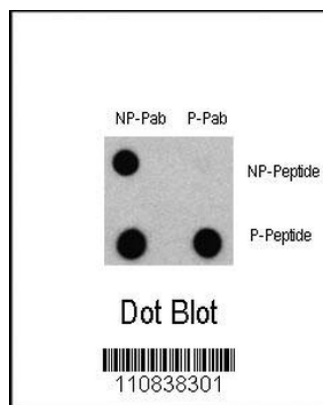
Email: info@biorbyt.com, support@biorbyt.com
Phone: [+44 \(0\)1223 859353](tel:+44(0)1223859353) | Fax: [+1 \(415\) 651-8558](tel:+1(415)651-8558)

Biorbyt LLC

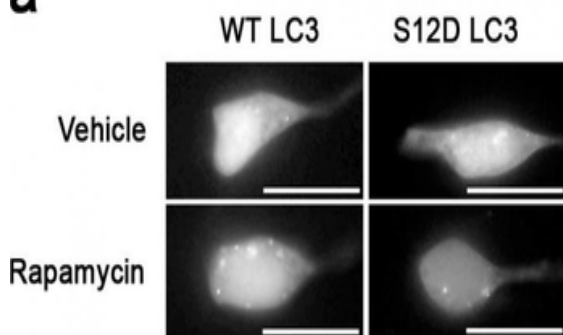
68 TW Alexander Drive
Research Triangle Park
Durham
NC 27713
United States

Email: info@biorbyt.com, support@biorbyt.com
Phone: [+1 \(415\) 906-5211](tel:+1(415)906-5211) | Fax: [+1 \(415\) 651-8558](tel:+1(415)651-8558)

| | |
|------------------------|--|
| Antibody Type | Primary Antibody |
| Clone Number | BTD32050XTD38981 |
| Storage | Maintain refrigerated at 2-8°C for up to 2 weeks. For long term storage store at -20°C in small aliquots to prevent freeze-thaw cycles |
| Note | For research use only |
| NCBI | NP_852610.1, NP_115903.1 |
| Expiration Date | 12 months from date of receipt. |



Dot blot analysis of Phospho-LC3 (APG8a) - S12 Antibody and Nonphospho-LC3 (APG8a) Antibody on nitrocellulose membrane. 50ng of Phospho-peptide or Non Phospho-peptide per dot were adsorbed. Antibody working concentrations are 0.5ug per ml.

a

Something like SH-SY5Y cells expressing GFP-LC3-WT or-S12D treated with rapamycin or vehicle for 1 h.

Biorbyt Ltd.

7 Signet Court, Swann Road
Cambridge
CB5 8LA
United Kingdom

Email: info@biorbyt.com, support@biorbyt.com

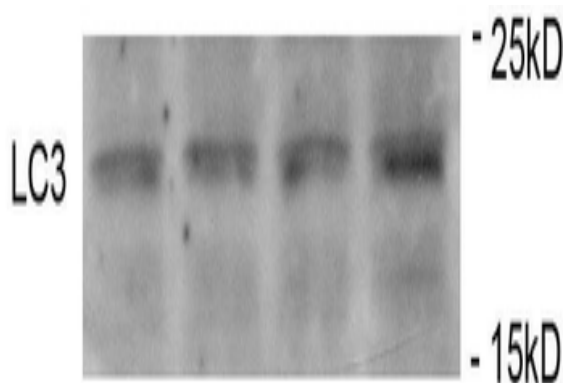
Phone: +44 (0)1223 859353 | Fax: +1 (415) 651-8558

Biorbyt LLC

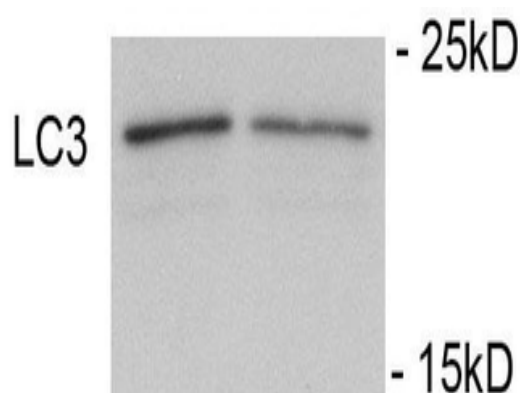
68 TW Alexander Drive
Research Triangle Park
Durham
NC 27713
United States

Email: info@biorbyt.com, support@biorbyt.com

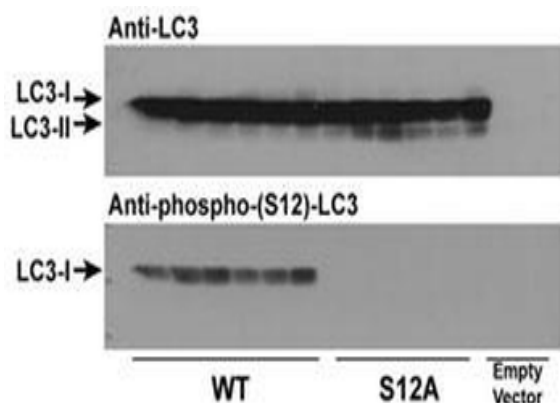
Phone: +1 (415) 906-5211 | Fax: +1 (415) 651-8558



Immunoblots of SH-SY5Y cells treated with MPP+ for 24h. The data shows that treatment with MPP+ showed no significant change in level of LC3.



Immunoblots of SH-SY5Y cells treated with rapamycin for 1 h. The data shows that treatment with rapamycin showed no significant change in level of LC3.



Immunoblots of phosphorylated LC3 (phospho-LC3) in CHO cell culture. LC3 and LC3 S12A mutant vectors were transfected into CHO cells. The cell lysates were separated with SDS-PAGE and blotted with anti-phospho-LC3 S12 antibody. LC3 = microtubule-associated protein light chain-3; S12A = replacement of the amino acid position 12 serine of LC3 with alanine. WT = wildtype LC3-transfected cell lysates; S12A = LC3 S12A mutant-transfected cell lysates; Empty vector = vector with no LC3 gene. Molecular size: LC3-I = 16kDa, and LC3-II = 14 kDa

Biorbyt Ltd.

7 Signet Court, Swann Road
Cambridge
CB5 8LA
United Kingdom

Email: info@biorbyt.com, support@biorbyt.com
Phone: +44 (0)1223 859353 | Fax: +1 (415) 651-8558

Biorbyt LLC

68 TW Alexander Drive
Research Triangle Park
Durham
NC 27713
United States

Email: info@biorbyt.com, support@biorbyt.com
Phone: +1 (415) 906-5211 | Fax: +1 (415) 651-8558