

Product Datasheet

Phospho-EGFR(Y1069) Antibody (orb1931203)

Catalog Number	orb1931203
Category	Antibodies
Description	Phospho-EGFR(Y1069) Antibody
Clonality	Polyclonal
Species/Host	Rabbit
Isotype	Rabbit IgG
Conjugation	Unconjugated
Reactivity	Human, Mouse, Rat
Form/Appearance	Purified polyclonal antibody supplied in PBS with 0.09% (W/V) sodium azide. This antibody is purified through a protein A column, followed by peptide affinity purification.
UniProt ID	P00533
MW	134277 Da
Tested applications	DOT, WB
Dilution range	WB - 1:2000, DB - 1:500
Specificity	This EGFR Antibody is generated from rabbits immunized with a KLH conjugated synthetic phosphopeptide corresponding to amino acid residues surrounding Y1069 of human EGFR.
Storage	Maintain refrigerated at 2-8°C for up to 2 weeks. For long term storage store at -20°C in small aliquots to prevent freeze-thaw cycles

Biorbyt Ltd.

7 Signet Court, Swann Road
Cambridge
CB5 8LA
United Kingdom

Email: info@biorbyt.com, support@biorbyt.com
Phone: [+44 \(0\)1223 859353](tel:+44(0)1223859353) | Fax: [+1 \(415\) 651-8558](tel:+1(415)651-8558)

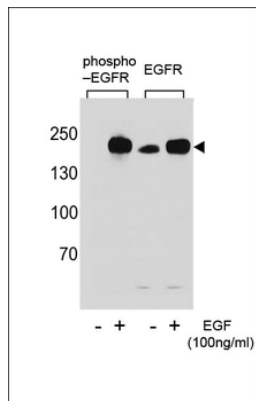
Biorbyt LLC

68 TW Alexander Drive
Research Triangle Park
Durham
NC 27713
United States

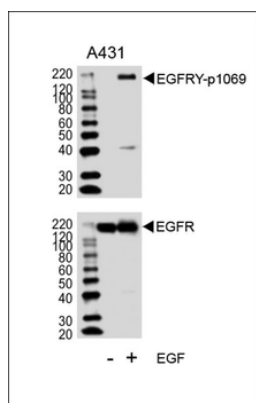
Email: info@biorbyt.com, support@biorbyt.com
Phone: [+1 \(415\) 906-5211](tel:+1(415)906-5211) | Fax: [+1 \(415\) 651-8558](tel:+1(415)651-8558)

Note For research use only

Expiration Date 12 months from date of receipt.



(LEFT) Dot blot analysis of Phospho-EGFR-Y1069 polyclonal antibody on nitrocellulose membrane. 50ng of Phospho-peptide or Non Phospho-peptide per dot were adsorbed. Antibody working concentration was 0.5ug per ml. P-Pab: phospho-antibody; P-Peptide: phospho-peptide; NP-Peptide: non-phospho-peptide. (RIGHT) Western blot analysis of EGFR (arrow) in Hela cell lysates, either noninduced (Lane 1) or induced with EGF (Lane 2).



Western blot analysis of lysates from A431 cell line, untreated or treated with EGF, 100ng/ml, using EGFR Antibody (p1069) (upper) or EGFR (lower).

Biorbyt Ltd.

7 Signet Court, Swann Road
Cambridge
CB5 8LA
United Kingdom

Email: info@biorbyt.com, support@biorbyt.com
Phone: +44 (0)1223 859353 | Fax: +1 (415) 651-8558

Biorbyt LLC

68 TW Alexander Drive
Research Triangle Park
Durham
NC 27713
United States

Email: info@biorbyt.com, support@biorbyt.com
Phone: +1 (415) 906-5211 | Fax: +1 (415) 651-8558