

## Product Datasheet

### Phospho-ACTH(S168) Antibody (orb1931049)

|                            |  |
|----------------------------|--|
| <b>Catalog Number</b>      | orb1931049   |
| <b>Category</b>            | Antibodies   |
| <b>Description</b>         | Affinity Purified Rabbit Polyclonal Antibody (Pab)   |
| <b>Target</b>              | POMC   |
| <b>Clonality</b>           | Polyclonal   |
| <b>Species/Host</b>        | Rabbit   |
| <b>Isotype</b>             | Rabbit IgG   |
| <b>Conjugation</b>         | Unconjugated   |
| <b>Reactivity</b>          | Human  |
| <b>Form/Appearance</b>     | Purified polyclonal antibody supplied in PBS with 0.09% (W/V) sodium azide. This antibody is purified through a protein A column, followed by peptide affinity purification. |
| <b>Immunogen</b>           | This ACTH Antibody is generated from rabbits immunized with a KLH conjugated synthetic phosphopeptide corresponding to amino acid residues surrounding S168 of human ACTH.   |
| <b>UniProt ID</b>          | <b>P01189</b>  |
| <b>MW</b>                  | 29424 Da   |
| <b>Tested applications</b> | DOT  |
| <b>Dilution range</b>      | DB - 1:500   |
| <b>Antibody Type</b>       | Primary Antibody   |

**Biorbyt Ltd.**

7 Signet Court, Swann Road  
Cambridge  
CB5 8LA  
United Kingdom

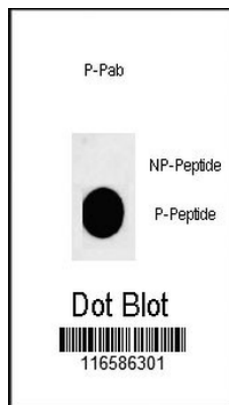
Email: [info@biorbyt.com](mailto:info@biorbyt.com), [support@biorbyt.com](mailto:support@biorbyt.com)  
Phone: [+44 \(0\)1223 859353](tel:+44(0)1223859353) | Fax: [+1 \(415\) 651-8558](tel:+1(415)651-8558)

**Biorbyt LLC**

68 TW Alexander Drive  
Research Triangle Park  
Durham  
NC 27713-2847  
United States

Email: [info@biorbyt.com](mailto:info@biorbyt.com), [support@biorbyt.com](mailto:support@biorbyt.com)  
Phone: [+1 \(415\) 906-5211](tel:+1(415)906-5211) | Fax: [+1 \(415\) 651-8558](tel:+1(415)651-8558)

|                        |  |
|------------------------|--|
| <b>Storage</b>         | Maintain refrigerated at 2-8°C for up to 2 weeks. For long term storage store at -20°C in small aliquots to prevent freeze-thaw cycles |
| <b>Note</b>            | For research use only  |
| <b>NCBI</b>            | <b>NP_001030333.1, NP_000930.1</b>   |
| <b>Expiration Date</b> | 12 months from date of receipt.  |



Dot blot analysis of anti-Phospho-ACTH-pS168 Phospho-specific Pab on nitrocellulose membrane. 50ng of Phospho-peptide or Non Phospho-peptide per dot were adsorbed. Antibody working concentrations are 0.5ug per ml.

**Biorbyt Ltd.**

7 Signet Court, Swann Road  
Cambridge  
CB5 8LA  
United Kingdom

Email: [info@biorbyt.com](mailto:info@biorbyt.com), [support@biorbyt.com](mailto:support@biorbyt.com)

Phone: [+44 \(0\)1223 859353](tel:+44(0)1223859353) | Fax: [+1 \(415\) 651-8558](tel:+1(415)651-8558)

**Biorbyt LLC**

68 TW Alexander Drive  
Research Triangle Park  
Durham  
NC 27713-2847  
United States

Email: [info@biorbyt.com](mailto:info@biorbyt.com), [support@biorbyt.com](mailto:support@biorbyt.com)

Phone: [+1 \(415\) 906-5211](tel:+1(415)906-5211) | Fax: [+1 \(415\) 651-8558](tel:+1(415)651-8558)