

## Product Datasheet

### PINK1 (PARK6) Antibody (Center) (orb1930053)

|                            |   |
|----------------------------|---|
| <b>Catalog Number</b>      | orb1930053  |
| <b>Category</b>            | Antibodies  |
| <b>Description</b>         | Purified Rabbit Polyclonal Antibody (Pab)   |
| <b>Target</b>              | PINK1   |
| <b>Clonality</b>           | Polyclonal  |
| <b>Species/Host</b>        | Rabbit  |
| <b>Isotype</b>             | Rabbit IgG  |
| <b>Conjugation</b>         | Unconjugated  |
| <b>Reactivity</b>          | Human   |
| <b>Form/Appearance</b>     | Purified polyclonal antibody supplied in PBS with 0.09% (W/V) sodium azide. This antibody is prepared by Saturated Ammonium Sulfate (SAS) precipitation followed by dialysis against PBS.                       |
| <b>Immunogen</b>           | This PINK1 (PARK6) antibody is generated from rabbits immunized with a KLH conjugated synthetic peptide between 237-266 amino acids from the Central region of human PINK1 (PARK6). Antigen Region: 237-266 aa. |
| <b>UniProt ID</b>          | <b>Q9BXM7</b>   |
| <b>MW</b>                  | 62769 Da  |
| <b>Tested applications</b> | WB  |
| <b>Dilution range</b>      | WB - 1:1000   |
| <b>Clone Number</b>        | BTD9505   |

**Biorbyt Ltd.**

7 Signet Court, Swann Road  
Cambridge  
CB5 8LA  
United Kingdom

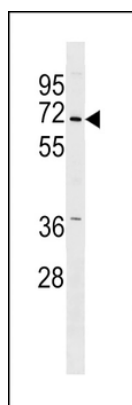
Email: [info@biorbyt.com](mailto:info@biorbyt.com), [support@biorbyt.com](mailto:support@biorbyt.com)  
Phone: [+44 \(0\)1223 859353](tel:+44(0)1223859353) | Fax: [+1 \(415\) 651-8558](tel:+1(415)651-8558)

**Biorbyt LLC**

68 TW Alexander Drive  
Research Triangle Park  
Durham  
NC 27713  
United States

Email: [info@biorbyt.com](mailto:info@biorbyt.com), [support@biorbyt.com](mailto:support@biorbyt.com)  
Phone: [+1 \(415\) 906-5211](tel:+1(415)906-5211) | Fax: [+1 \(415\) 651-8558](tel:+1(415)651-8558)

|                        |  |
|------------------------|--|
| <b>Storage</b>         | Maintain refrigerated at 2-8°C for up to 2 weeks. For long term storage store at -20°C in small aliquots to prevent freeze-thaw cycles |
| <b>Note</b>            | For research use only  |
| <b>NCBI</b>            | <b>NP_115785.1</b>   |
| <b>Expiration Date</b> | 12 months from date of receipt.  |



Park6 (PINK1) Antibody (Center) western blot analysis in A549 cell line lysates (35 ug/lane). This demonstrates the Park6 (PINK1) antibody detected the Park6 (PINK1) protein (arrow).

**Biorbyt Ltd.**

7 Signet Court, Swann Road  
Cambridge  
CB5 8LA  
United Kingdom

Email: [info@biorbyt.com](mailto:info@biorbyt.com), [support@biorbyt.com](mailto:support@biorbyt.com)

Phone: [+44 \(0\)1223 859353](tel:+44(0)1223859353) | Fax: [+1 \(415\) 651-8558](tel:+1(415)651-8558)

**Biorbyt LLC**

68 TW Alexander Drive  
Research Triangle Park  
Durham  
NC 27713  
United States

Email: [info@biorbyt.com](mailto:info@biorbyt.com), [support@biorbyt.com](mailto:support@biorbyt.com)

Phone: [+1 \(415\) 906-5211](tel:+1(415)906-5211) | Fax: [+1 \(415\) 651-8558](tel:+1(415)651-8558)