

## Product Datasheet

### HLA-E Antibody (Center) (orb1928459)

|                            |  |
|----------------------------|--|
| <b>Catalog Number</b>      | orb1928459   |
| <b>Category</b>            | Antibodies   |
| <b>Description</b>         | Affinity Purified Rabbit Polyclonal Antibody (Pab)   |
| <b>Target</b>              | This HLA-E antibody is generated from rabbits immunized with a KLH conjugated synthetic peptide between 108-135 amino acids from the Central region of human HLA-E.          |
| <b>Clonality</b>           | Polyclonal   |
| <b>Species/Host</b>        | Rabbit   |
| <b>Isotype</b>             | Rabbit IgG   |
| <b>Conjugation</b>         | Unconjugated   |
| <b>Reactivity</b>          | Human  |
| <b>Form/Appearance</b>     | Purified polyclonal antibody supplied in PBS with 0.09% (W/V) sodium azide. This antibody is purified through a protein A column, followed by peptide affinity purification. |
| <b>UniProt ID</b>          | <b>P13747</b>  |
| <b>MW</b>                  | 40058 Da   |
| <b>Tested applications</b> | WB   |
| <b>Dilution range</b>      | WB: 1:1000, WB: 1:1000   |
| <b>Antibody Type</b>       | Primary Antibody   |
| <b>Clone Number</b>        | RB22054  |

**Biorbyt Ltd.**

7 Signet Court, Swann Road  
Cambridge  
CB5 8LA  
United Kingdom

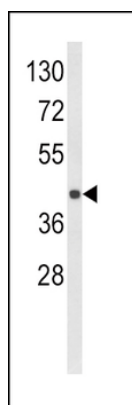
Email: [info@biorbyt.com](mailto:info@biorbyt.com), [support@biorbyt.com](mailto:support@biorbyt.com)  
Phone: [+44 \(0\)1223 859353](tel:+44(0)1223859353) | Fax: [+1 \(415\) 651-8558](tel:+1(415)651-8558)

**Biorbyt LLC**

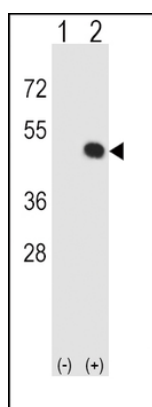
68 TW Alexander Drive  
Research Triangle Park  
Durham  
NC 27713  
United States

Email: [info@biorbyt.com](mailto:info@biorbyt.com), [support@biorbyt.com](mailto:support@biorbyt.com)  
Phone: [+1 \(415\) 906-5211](tel:+1(415)906-5211) | Fax: [+1 \(415\) 651-8558](tel:+1(415)651-8558)

|                        |  |
|------------------------|--|
| <b>Storage</b>         | Maintain refrigerated at 2-8°C for up to 2 weeks. For long term storage store at -20°C in small aliquots to prevent freeze-thaw cycles |
| <b>Note</b>            | For research use only  |
| <b>NCBI</b>            | <b>NP_005507.3</b>   |
| <b>Expiration Date</b> | 12 months from date of receipt.  |



Western blot analysis of HLA-E Antibody (Center) in MDA-MB231 cell line lysates (35 ug/lane). HLA-E (arrow) was detected using the purified Pab.



Western blot analysis of HLA-E (arrow) using rabbit polyclonal HLA-E Antibody (Center). 293 cell lysates (2 ug/lane) either nontransfected (Lane 1) or transiently transfected (Lane 2) with the HLA-E gene.

**Biorbyt Ltd.**

7 Signet Court, Swann Road  
Cambridge  
CB5 8LA  
United Kingdom

Email: [info@biorbyt.com](mailto:info@biorbyt.com), [support@biorbyt.com](mailto:support@biorbyt.com)

Phone: +44 (0)1223 859353 | Fax: +1 (415) 651-8558

**Biorbyt LLC**

68 TW Alexander Drive  
Research Triangle Park  
Durham  
NC 27713  
United States

Email: [info@biorbyt.com](mailto:info@biorbyt.com), [support@biorbyt.com](mailto:support@biorbyt.com)

Phone: +1 (415) 906-5211 | Fax: +1 (415) 651-8558