

## Product Datasheet

### NR1I2 Antibody (Center) (orb1928356)

|                            |   |
|----------------------------|---|
| <b>Catalog Number</b>      | orb1928356  |
| <b>Category</b>            | Antibodies  |
| <b>Description</b>         | Affinity Purified Rabbit Polyclonal Antibody (Pab)  |
| <b>Target</b>              | NR1I2   |
| <b>Clonality</b>           | Polyclonal  |
| <b>Species/Host</b>        | Rabbit  |
| <b>Isotype</b>             | Rabbit IgG  |
| <b>Conjugation</b>         | Unconjugated  |
| <b>Reactivity</b>          | Human   |
| <b>Form/Appearance</b>     | Purified polyclonal antibody supplied in PBS with 0.09% (W/V) sodium azide. This antibody is purified through a protein A column, followed by peptide affinity purification.                    |
| <b>Immunogen</b>           | This NR1I2 antibody is generated from rabbits immunized with a KLH conjugated synthetic peptide between 100-127 amino acids from the Central region of human NR1I2. Antigen Region: 100-127 aa. |
| <b>UniProt ID</b>          | <b>O75469</b>   |
| <b>MW</b>                  | 49762 Da  |
| <b>Tested applications</b> | FC, IF, IHC-P, WB   |
| <b>Dilution range</b>      | IF - 1:10-50, WB - 1:1000, IHC-P - 1:50-100, FC - 1:10-50   |
| <b>Clone Number</b>        | BTD43012  |

**Biorbyt Ltd.**

7 Signet Court, Swann Road  
Cambridge  
CB5 8LA  
United Kingdom

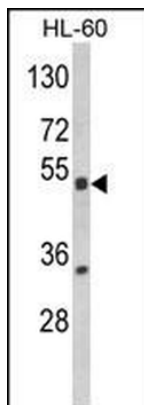
Email: [info@biorbyt.com](mailto:info@biorbyt.com), [support@biorbyt.com](mailto:support@biorbyt.com)  
Phone: [+44 \(0\)1223 859353](tel:+44(0)1223859353) | Fax: [+1 \(415\) 651-8558](tel:+1(415)651-8558)

**Biorbyt LLC**

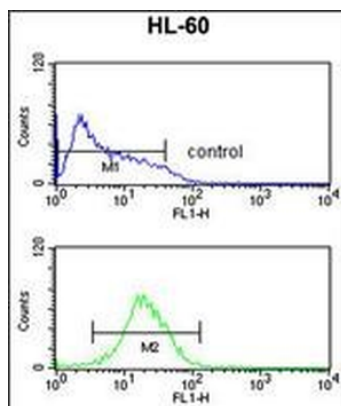
68 TW Alexander Drive  
Research Triangle Park  
Durham  
NC 27713  
United States

Email: [info@biorbyt.com](mailto:info@biorbyt.com), [support@biorbyt.com](mailto:support@biorbyt.com)  
Phone: [+1 \(415\) 906-5211](tel:+1(415)906-5211) | Fax: [+1 \(415\) 651-8558](tel:+1(415)651-8558)

|                        |  |
|------------------------|--|
| <b>Storage</b>         | Maintain refrigerated at 2-8°C for up to 2 weeks. For long term storage store at -20°C in small aliquots to prevent freeze-thaw cycles |
| <b>Note</b>            | For research use only  |
| <b>NCBI</b>            | <a href="#">NP_148934.1</a> , <a href="#">NP_071285.1</a> , <a href="#">NP_003880.3</a>  |
| <b>Expiration Date</b> | 12 months from date of receipt.  |



Western blot analysis of NR1I2 Antibody (Center) in HL-60 cell line lysates (35 ug/lane). NR1I2 (arrow) was detected using the purified Pab.



NR1I2 Antibody (Center) flow cytometric analysis of HL-60 cells (bottom histogram) compared to a negative control cell (top histogram). FITC-conjugated goat-anti-rabbit secondary antibodies were used for the analysis.

**Biorbyt Ltd.**

7 Signet Court, Swann Road  
Cambridge  
CB5 8LA  
United Kingdom

Email: [info@biorbyt.com](mailto:info@biorbyt.com), [support@biorbyt.com](mailto:support@biorbyt.com)

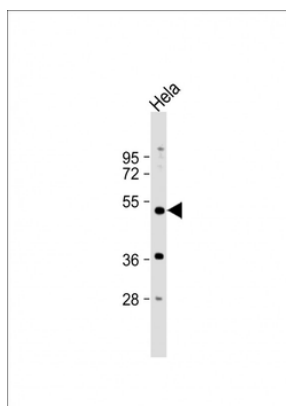
Phone: +44 (0)1223 859353 | Fax: +1 (415) 651-8558

**Biorbyt LLC**

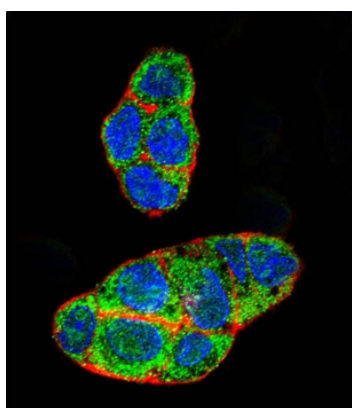
68 TW Alexander Drive  
Research Triangle Park  
Durham  
NC 27713  
United States

Email: [info@biorbyt.com](mailto:info@biorbyt.com), [support@biorbyt.com](mailto:support@biorbyt.com)

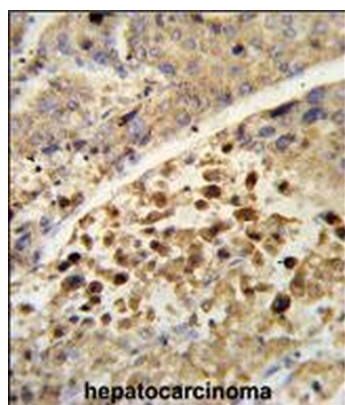
Phone: +1 (415) 906-5211 | Fax: +1 (415) 651-8558



Anti-NR1I2 Antibody (Center) at 1:1000 dilution + HeLa whole cell lysate. Lysates/proteins at 20 µg per lane. Secondary Goat Anti-Rabbit IgG, (H+L), Peroxidase conjugated at 1/10000 dilution. Predicted band size: 50 kDa. Blocking/Dilution buffer: 5% NFDM/TBST.



Confocal immunofluorescent analysis of NR1I2 Antibody (Center) with HepG2 cell followed by Alexa Fluor 488-conjugated goat anti-rabbit IgG (green). Actin filaments have been labeled with Alexa Fluor 555 phalloidin (red). DAPI was used to stain the cell nuclear (blue).



Formalin-fixed and paraffin-embedded human hepatocarcinoma reacted with NR1I2 Antibody (Center), which was peroxidase-conjugated to the secondary antibody, followed by DAB staining. This data demonstrates the use of this antibody for immunohistochemistry; clinical relevance has not been evaluated.

**Biorbyt Ltd.**

7 Signet Court, Swann Road  
Cambridge  
CB5 8LA  
United Kingdom

Email: [info@biorbyt.com](mailto:info@biorbyt.com), [support@biorbyt.com](mailto:support@biorbyt.com)

Phone: [+44 \(0\)1223 859353](tel:+44(0)1223859353) | Fax: [+1 \(415\) 651-8558](tel:+1(415)651-8558)

**Biorbyt LLC**

68 TW Alexander Drive  
Research Triangle Park  
Durham  
NC 27713  
United States

Email: [info@biorbyt.com](mailto:info@biorbyt.com), [support@biorbyt.com](mailto:support@biorbyt.com)

Phone: [+1 \(415\) 906-5211](tel:+1(415)906-5211) | Fax: [+1 \(415\) 651-8558](tel:+1(415)651-8558)