

Product Datasheet

RPL36 Antibody (N-term) (orb1927814)

Catalog Number	orb1927814
Category	Antibodies
Description	Affinity Purified Rabbit Polyclonal Antibody (Pab)
Target	RPL36
Clonality	Polyclonal
Species/Host	Rabbit
Isotype	Rabbit IgG
Conjugation	Unconjugated
Reactivity	Human
Predicted Reactivity	Mouse, Other, Rat
Form/Appearance	Purified polyclonal antibody supplied in PBS with 0.09% (W/V) sodium azide. This antibody is purified through a protein A column, followed by peptide affinity purification.
Immunogen	This RPL36 antibody is generated from rabbits immunized with a KLH conjugated synthetic peptide between 14-42 amino acids from the N-terminal region of human RPL36. Antigen Region: 14-42 aa.
UniProt ID	Q9Y3U8
MW	12254 Da
Tested applications	WB
Dilution range	WB - 1:1000

Biorbyt Ltd.

7 Signet Court, Swann Road
Cambridge
CB5 8LA
United Kingdom

Email: info@biorbyt.com, support@biorbyt.com

Phone: [+44 \(0\)1223 859353](tel:+44(0)1223859353) | Fax: [+1 \(415\) 651-8558](tel:+1(415)651-8558)

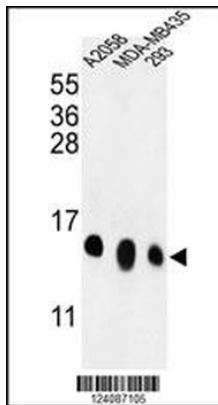
Biorbyt LLC

68 TW Alexander Drive
Research Triangle Park
Durham
NC 27713
United States

Email: info@biorbyt.com, support@biorbyt.com

Phone: [+1 \(415\) 906-5211](tel:+1(415)906-5211) | Fax: [+1 \(415\) 651-8558](tel:+1(415)651-8558)

Storage	Maintain refrigerated at 2-8°C for up to 2 weeks. For long term storage store at -20°C in small aliquots to prevent freeze-thaw cycles
Note	For research use only
NCBI	NP_378669.1, NP_056229.2
Expiration Date	12 months from date of receipt.



Western blot analysis of RPL36 Antibody (N-term) in A2058, MDA-MB435, 293 cell line lysates (35 ug/lane). RPL36 (arrow) was detected using the purified Pab.

Biorbyt Ltd.

7 Signet Court, Swann Road
Cambridge
CB5 8LA
United Kingdom

Email: info@biorbyt.com, support@biorbyt.com

Phone: +44 (0)1223 859353 | Fax: +1 (415) 651-8558

Biorbyt LLC

68 TW Alexander Drive
Research Triangle Park
Durham
NC 27713
United States

Email: info@biorbyt.com, support@biorbyt.com

Phone: +1 (415) 906-5211 | Fax: +1 (415) 651-8558