

Product Datasheet

RPL17 Antibody (C-term) (orb1927661)

Catalog Number	orb1927661
Category	Antibodies
Description	Affinity Purified Rabbit Polyclonal Antibody (Pab)
Target	RPL17
Clonality	Polyclonal
Species/Host	Rabbit
Isotype	Rabbit IgG
Conjugation	Unconjugated
Reactivity	Human
Predicted Reactivity	Mouse, Rabbit, Rat
Form/Appearance	Purified polyclonal antibody supplied in PBS with 0.09% (W/V) sodium azide. This antibody is purified through a protein A column, followed by peptide affinity purification.
Immunogen	This RPL17 antibody is generated from rabbits immunized with a KLH conjugated synthetic peptide between 156-184 amino acids from the C-terminal region of human RPL17. Antigen Region: 156-184 aa.
UniProt ID	P18621
MW	21397 Da
Tested applications	IHC-P, WB
Dilution range	WB - 1:1000, IHC-P - 1:50-100

Biorbyt Ltd.

7 Signet Court, Swann Road
Cambridge
CB5 8LA
United Kingdom

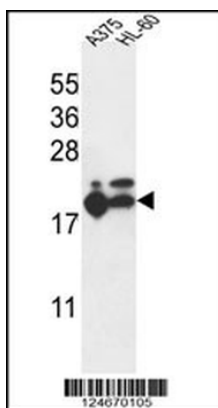
Email: info@biorbyt.com, support@biorbyt.com
Phone: [+44 \(0\)1223 859353](tel:+44(0)1223859353) | Fax: [+1 \(415\) 651-8558](tel:+1(415)651-8558)

Biorbyt LLC

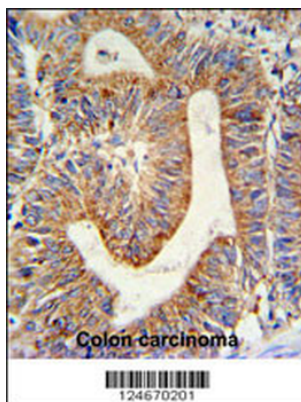
68 TW Alexander Drive
Research Triangle Park
Durham
NC 27713-2847
United States

Email: info@biorbyt.com, support@biorbyt.com
Phone: [+1 \(415\) 906-5211](tel:+1(415)906-5211) | Fax: [+1 \(415\) 651-8558](tel:+1(415)651-8558)

Storage	Maintain refrigerated at 2-8°C for up to 2 weeks. For long term storage store at -20°C in small aliquots to prevent freeze-thaw cycles
Note	For research use only
NCBI	NP_001186269.1, NP_001186271.1, NP_001030178.1, NP_001186274.1, NP_001186273.1, NP_001186272.1, NP_001186284.1, NP_001186270.1, NP_000976.1
Expiration Date	12 months from date of receipt.



RPL17 Antibody (C-term) western blot analysis in A375, HL-60 cell line lysates (35 ug/lane). This demonstrates the RPL17 antibody detected the RPL17 protein (arrow).



RPL17 Antibody (C-term) IHC analysis in formalin fixed and paraffin embedded colon carcinoma followed by peroxidase conjugation of the secondary antibody and DAB staining. This data demonstrates the use of the RPL17 Antibody (C-term) for immunohistochemistry. Clinical relevance has not been evaluated.

Biorbyt Ltd.

7 Signet Court, Swann Road
Cambridge
CB5 8LA
United Kingdom

Email: info@biorbyt.com, support@biorbyt.com

Phone: +44 (0)1223 859353 | Fax: +1 (415) 651-8558

Biorbyt LLC

68 TW Alexander Drive
Research Triangle Park
Durham
NC 27713-2847
United States

Email: info@biorbyt.com, support@biorbyt.com

Phone: +1 (415) 906-5211 | Fax: +1 (415) 651-8558