

Product Datasheet

Karyopherin (importin) beta 1 Antibody (orb19255)

Catalog Number	orb19255
Category	Antibodies
Description	Goat polyclonal antibody to KPNB1
Target	Karyopherin (importin) beta 1
Clonality	Polyclonal
Species/Host	Goat
Conjugation	Unconjugated
Reactivity	Human, Rat
Predicted Reactivity	Bovine, Canine, Mouse
Buffer/Preservatives	Supplied at 0.5 mg/ml in Tris saline, 0.02% sodium azide, pH 7.3 with 0.5% bovine serum albumin. Aliquot and store at -20°C. Minimize freezing and thawing.
Purification	Purified from goat serum by ammonium sulphate precipitation followed by antigen affinity chromatography using the immunizing peptide.
Protein Sequence	RRSKTNKAKTLAT
RRID	AB_10755917
MW	97.2
Tested applications	ELISA, FC, IF, IHC, WB

Biorbyt Ltd.

7 Signet Court, Swann Road
Cambridge
CB5 8LA
United Kingdom

Email: info@biorbyt.com, support@biorbyt.com

Phone: [+44 \(0\)1223 859353](tel:+44(0)1223859353) | Fax: [+1 \(415\) 651-8558](tel:+1(415)651-8558)

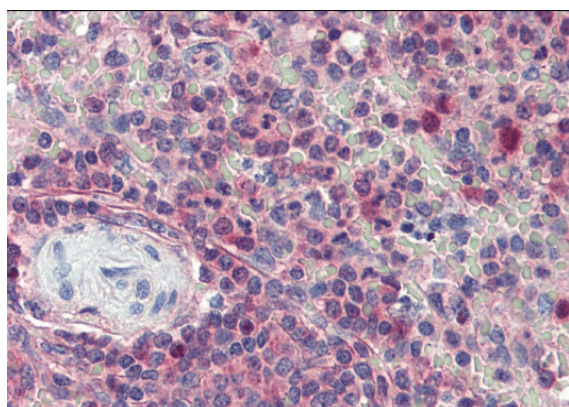
Biorbyt LLC

68 TW Alexander Drive
Research Triangle Park
Durham
NC 27713
United States

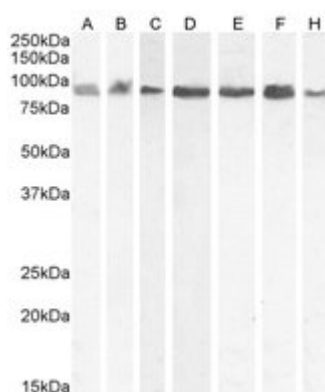
Email: info@biorbyt.com, support@biorbyt.com

Phone: [+1 \(415\) 906-5211](tel:+1(415)906-5211) | Fax: [+1 \(415\) 651-8558](tel:+1(415)651-8558)

Dilution range	ELISA: 1:32000, WB: 0.03-0.1 µg/ml, IHC-P: 5 µg/ml
Application notes	ELISA: Peptide ELISA: antibody detection limit dilution 1:32000.WB: Approx 90-100kDa band observed in lysates of cell lines Daudi, HEK293, and Jurkat (calculated MW of 97.2kDa according to NP_002256.2). Recommended concentration: 0.03-0.1 µg/ml.
Storage	Maintain refrigerated at 2-8°C for up to 2 weeks. For long term storage store at -20°C in small aliquots to prevent freeze-thaw cycles.
Note	For research use only
Entrez	3837
Expiration Date	12 months from date of receipt.



Immunohistochemical staining of paraffin embedded Human Spleen using KPNB1 antibody.



Western blot analysis of A431 (A), HEK293 (B), Jurkat (C), Daudi (D), HeLa (E) and Kelly (F) and KNRK (G) cell lysate using KPNB1 antibody.

Biorbyt Ltd.

7 Signet Court, Swann Road
Cambridge
CB5 8LA
United Kingdom

Email: info@biorbyt.com, support@biorbyt.com

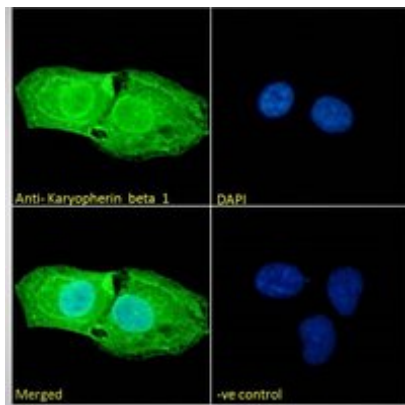
Phone: +44 (0)1223 859353 | Fax: +1 (415) 651-8558

Biorbyt LLC

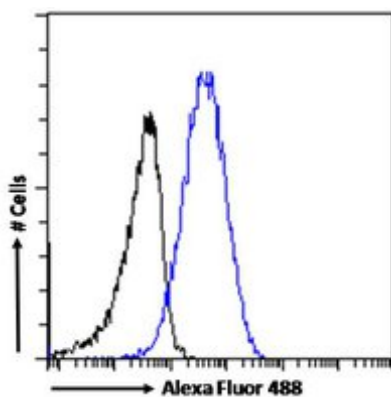
68 TW Alexander Drive
Research Triangle Park
Durham
NC 27713
United States

Email: info@biorbyt.com, support@biorbyt.com

Phone: +1 (415) 906-5211 | Fax: +1 (415) 651-8558



Immunofluorescence analysis of paraformaldehyde fixed U2OS cells using KPNB1 antibody.



Flow cytometric analysis of paraformaldehyde fixed A431 cells using KPNB1 antibody.

Biorbyt Ltd.

7 Signet Court, Swann Road
Cambridge
CB5 8LA
United Kingdom

Email: info@biorbyt.com, support@biorbyt.com

Phone: [+44 \(0\)1223 859353](tel:+44(0)1223859353) | Fax: [+1 \(415\) 651-8558](tel:+1(415)651-8558)

Biorbyt LLC

68 TW Alexander Drive
Research Triangle Park
Durham
NC 27713
United States

Email: info@biorbyt.com, support@biorbyt.com

Phone: [+1 \(415\) 906-5211](tel:+1(415)906-5211) | Fax: [+1 \(415\) 651-8558](tel:+1(415)651-8558)