

Product Datasheet

Catalase/CAT Antibody (orb19252)

Catalog Number	orb19252
Category	Antibodies
Description	Goat polyclonal antibody to CAT
Target	Catalase / CAT
Clonality	Polyclonal
Species/Host	Goat
Conjugation	Unconjugated
Reactivity	Human, Mouse
Predicted Reactivity	Canine
Buffer/Preservatives	Supplied at 0.5 mg/ml in Tris saline, 0.02% sodium azide, pH 7.3 with 0.5% bovine serum albumin. Aliquot and store at -20°C. Minimize freezing and thawing.
Purification	Purified from goat serum by ammonium sulphate precipitation followed by antigen affinity chromatography using the immunizing peptide.
Protein Sequence	DKYNAEKPKNAIHT
RRID	AB_10753324
MW	59.8
Tested applications	ELISA, IHC, WB
Dilution range	ELISA: 1:8000, WB: 0.1-0.3 µg/ml

Biorbyt Ltd.

7 Signet Court, Swann Road
Cambridge
CB5 8LA
United Kingdom

Email: info@biorbyt.com, support@biorbyt.com

Phone: [+44 \(0\)1223 859353](tel:+44(0)1223859353) | Fax: [+1 \(415\) 651-8558](tel:+1(415)651-8558)

Biorbyt LLC

68 TW Alexander Drive
Research Triangle Park
Durham
NC 27713
United States

Email: info@biorbyt.com, support@biorbyt.com

Phone: [+1 \(415\) 906-5211](tel:+1(415)906-5211) | Fax: [+1 \(415\) 651-8558](tel:+1(415)651-8558)

Application notes

ELISA: Peptide ELISA: antibody detection limit dilution 1:32000.IHC: Immunohistochemistry: In paraffin embedded Human Liver shows vesicular staining in the cytoplasm of hepatocytes. Recommended concentration, 2-4ug/ml.WB: Approx 60kDa band observed in Human Kidney and Liver lysates (calculated MW of 59.8kDa according to NP_001743.1). Recommended concentration: 0.3-1 µg/ml.

Storage

Maintain refrigerated at 2-8°C for up to 2 weeks. For long term storage store at -20°C in small aliquots to prevent freeze-thaw cycles.

Note

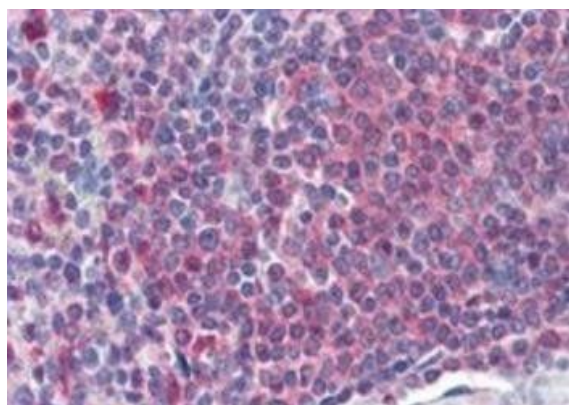
For research use only

Entrez

847

Expiration Date

12 months from date of receipt.



Immunohistochemical staining of Human Spleen using CAT antibody



Western blot analysis of Human Kidney lysate using CAT antibody

Biorbyt Ltd.

7 Signet Court, Swann Road
Cambridge
CB5 8LA
United Kingdom

Email: info@biorbyt.com, support@biorbyt.com

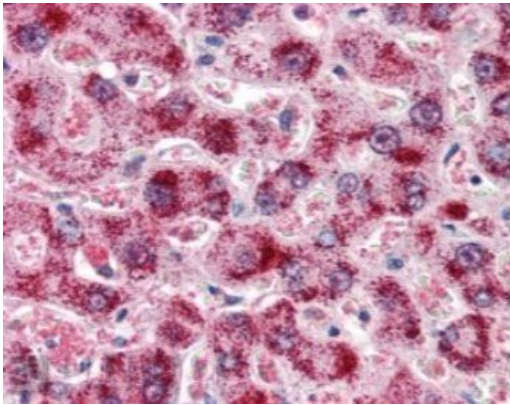
Phone: +44 (0)1223 859353 | Fax: +1 (415) 651-8558

Biorbyt LLC

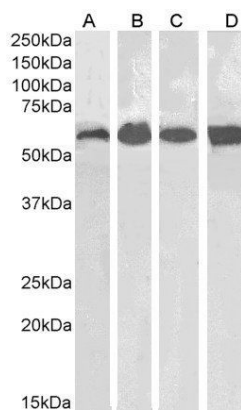
68 TW Alexander Drive
Research Triangle Park
Durham
NC 27713
United States

Email: info@biorbyt.com, support@biorbyt.com

Phone: +1 (415) 906-5211 | Fax: +1 (415) 651-8558



Immunohistochemical staining of Human Liver using CAT antibody



Western blot analysis of Human Kidney (A) and Liver (B) and Mouse Kidney (C) and Liver (D) lysates using CAT antibody

Biorbyt Ltd.

7 Signet Court, Swann Road
Cambridge
CB5 8LA
United Kingdom

Email: info@biorbyt.com, support@biorbyt.com

Phone: [+44 \(0\)1223 859353](tel:+44(0)1223859353) | Fax: [+1 \(415\) 651-8558](tel:+1(415)651-8558)

Biorbyt LLC

68 TW Alexander Drive
Research Triangle Park
Durham
NC 27713
United States

Email: info@biorbyt.com, support@biorbyt.com

Phone: [+1 \(415\) 906-5211](tel:+1(415)906-5211) | Fax: [+1 \(415\) 651-8558](tel:+1(415)651-8558)