

Product Datasheet

VEGF Rabbit Polyclonal Antibody (orb191500)

Catalog Number	orb191500
Category	Antibodies
Description	This VEGF Rabbit Polyclonal Antibody against VEGF, raised against a KLH-conjugated synthetic peptide from human VEGF. Affinity-purified; validated for ELISA, ICC, IF, IHC-P, and WB. Broad reactivity: bovine, canine, chicken, guinea pig, human, mouse, porcine, rat, and sheep.
Target	VEGF
Clonality	Polyclonal
Species/Host	Rabbit
Isotype	IgG
Conjugation	Unconjugated
Reactivity	Bovine, Canine, Gallus, Guinea pig, Human, Mouse, Porcine, Rat, Sheep
Form/Appearance	10 mM PBS, 0.02% sodium azide, 10mg/ml rAlbumin, 25% glycerol
Concentration	- 100 µg (in 200 µl): 0.5 mg/ml- 200 µg (in 400 µl): 0.5 mg/ml
Purity	Polyclonal antibodies are purified by peptide affinity chromatography
Immunogen	KLH conjugated synthetic peptide derived from human VEGF. Please contact us for the exact immunogen sequence. The peptide is available as orb374829.
UniProt ID	P15692, Q00731, P16612
Tested applications	ELISA, ICC, IF, IHC-P, WB
Dilution range	IF/ICC:1:100, IHC-P: 1:50, WB: 1:200

Biorbyt Ltd.

7 Signet Court, Swann Road
Cambridge
CB5 8LA
United Kingdom

Email: info@biorbyt.com, support@biorbyt.com

Phone: [+44 \(0\)1223 859353](tel:+44(0)1223859353) | Fax: [+1 \(415\) 651-8558](tel:+1(415)651-8558)

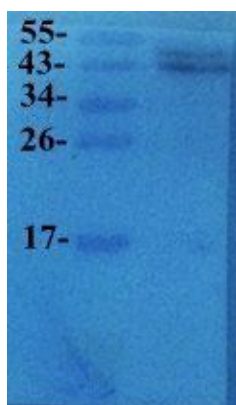
Biorbyt LLC

68 TW Alexander Drive
Research Triangle Park
Durham
NC 27713
United States

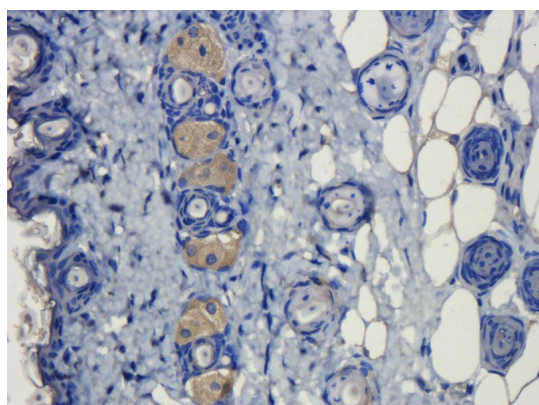
Email: info@biorbyt.com, support@biorbyt.com

Phone: [+1 \(415\) 906-5211](tel:+1(415)906-5211) | Fax: [+1 \(415\) 651-8558](tel:+1(415)651-8558)

Storage	Maintain refrigerated at 2-8°C for up to 2 weeks. For long term storage store at -20°C in small aliquots to prevent freeze-thaw cycles.
Note	For research use only
Entrez	7422
NCBI	001020537, 001025366
Expiration Date	12 months from date of receipt.



Western blot analysis of rat brain tissue using VEGFA antibody (dilution of primary antibody - 1:200)



IHC-P image of mouse skin tissue using anti-VEGFA (dilution of primary antibody at 1:50)

Biorbyt Ltd.

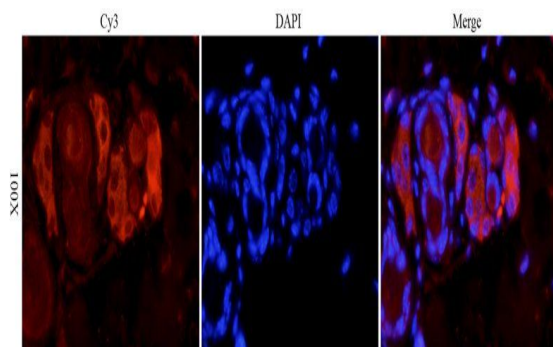
7 Signet Court, Swann Road
Cambridge
CB5 8LA
United Kingdom

Email: info@biorbyt.com, support@biorbyt.com
Phone: [+44 \(0\)1223 859353](tel:+44(0)1223859353) | Fax: [+1 \(415\) 651-8558](tel:+1(415)651-8558)

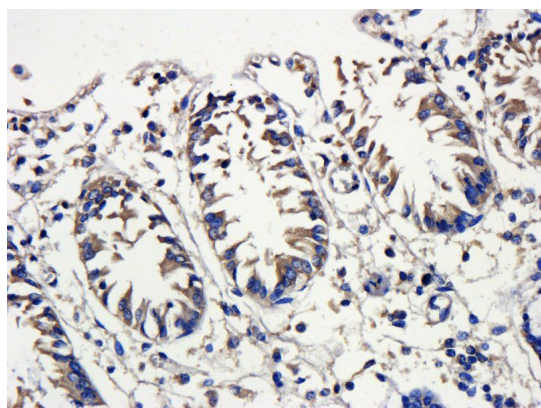
Biorbyt LLC

68 TW Alexander Drive
Research Triangle Park
Durham
NC 27713
United States

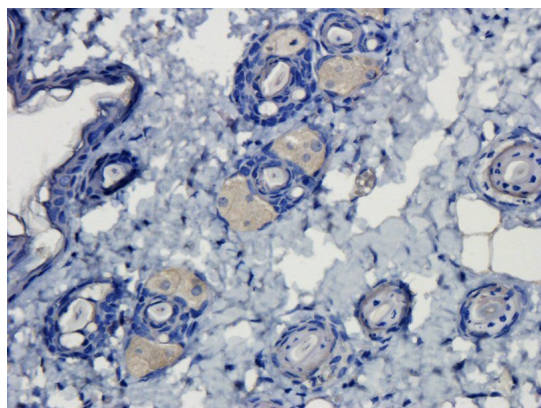
Email: info@biorbyt.com, support@biorbyt.com
Phone: [+1 \(415\) 906-5211](tel:+1(415)906-5211) | Fax: [+1 \(415\) 651-8558](tel:+1(415)651-8558)



Immunofluorescence analysis of mouse skin tissue using VEGFA antibody (dilution of primary antibody - 1:100)



IHC-P staining of pig large intestines tissue using VEGFA antibody (dilution at 1:50)



IHC-P staining of mouse skin tissue using anti-VEGFA (dilution at 1:50)

Biorbyt Ltd.

7 Signet Court, Swann Road
Cambridge
CB5 8LA
United Kingdom

Email: info@biorbyt.com, support@biorbyt.com

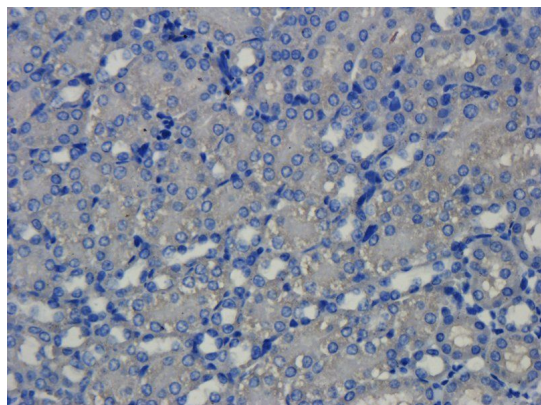
Phone: [+44 \(0\)1223 859353](tel:+44(0)1223859353) | Fax: [+1 \(415\) 651-8558](tel:+1(415)651-8558)

Biorbyt LLC

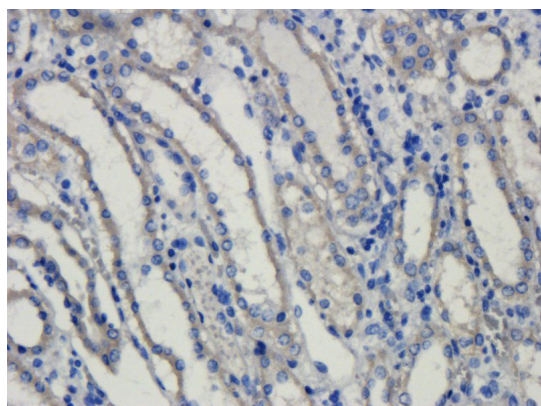
68 TW Alexander Drive
Research Triangle Park
Durham
NC 27713
United States

Email: info@biorbyt.com, support@biorbyt.com

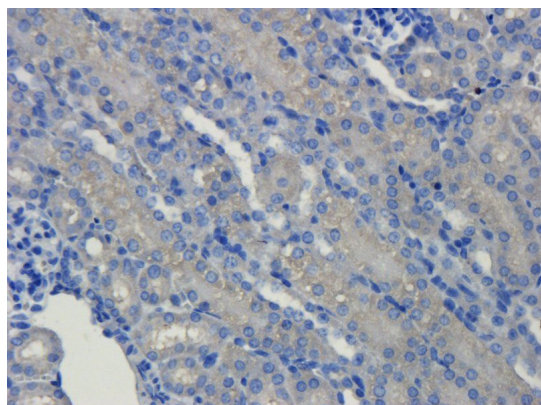
Phone: [+1 \(415\) 906-5211](tel:+1(415)906-5211) | Fax: [+1 \(415\) 651-8558](tel:+1(415)651-8558)



IHC-P image of mouse kidney tissue using VEGFA antibody (dilution of primary antibody at 1:50)



IHC-P staining of pig kidney tissue using VEGFA antibody (dilution at 1:50)



Immunohistochemical staining of paraffin embedded mouse kidney tissue using anti-VEGFA (primary antibody at 1:50)

Biorbyt Ltd.

7 Signet Court, Swann Road
Cambridge
CB5 8LA
United Kingdom

Email: info@biorbyt.com, support@biorbyt.com

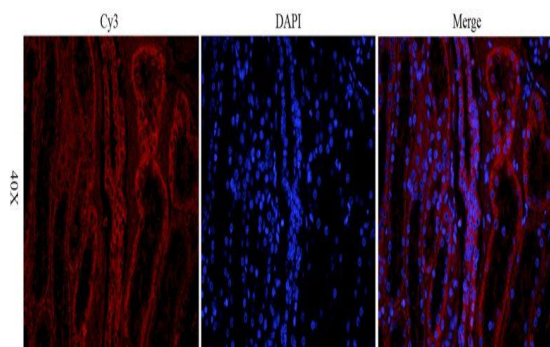
Phone: +44 (0)1223 859353 | Fax: +1 (415) 651-8558

Biorbyt LLC

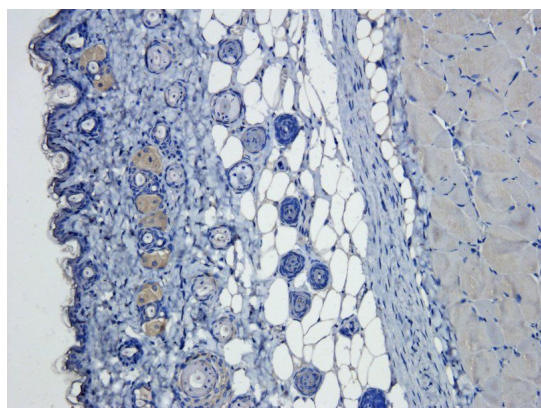
68 TW Alexander Drive
Research Triangle Park
Durham
NC 27713
United States

Email: info@biorbyt.com, support@biorbyt.com

Phone: +1 (415) 906-5211 | Fax: +1 (415) 651-8558



IF image of pig kidney tissue using VEGFA antibody (primary antibody at 1:100)



Immunohistochemical staining of paraffin embedded mouse skin tissue using anti-VEGFA (primary antibody at 1:50)

Biorbyt Ltd.

7 Signet Court, Swann Road
Cambridge
CB5 8LA
United Kingdom

Email: info@biorbyt.com, support@biorbyt.com
Phone: [+44 \(0\)1223 859353](tel:+44(0)1223859353) | Fax: [+1 \(415\) 651-8558](tel:+1(415)651-8558)

Biorbyt LLC

68 TW Alexander Drive
Research Triangle Park
Durham
NC 27713
United States

Email: info@biorbyt.com, support@biorbyt.com
Phone: [+1 \(415\) 906-5211](tel:+1(415)906-5211) | Fax: [+1 \(415\) 651-8558](tel:+1(415)651-8558)