

## Product Datasheet

# Human Complement Component 3a (C3a) ELISA Kit (orb1909661)

|                        |  |
|------------------------|--|
| <b>Catalog Number</b>  | orb1909661   |
| <b>Category</b>        | Assays and Kits  |
| <b>Description</b>     | This Human Complement Component 3a (C3a) ELISA Kit is a precoated, Sandwich ELISA assay designed to detect and quantify the target analyte in serum, plasma and other biological fluids . This product is for Research Use Only. |
| <b>Reactivity</b>      | Human  |
| <b>Assay Type</b>      | Sandwich   |
| <b>Assay Time</b>      | 4.5 hours  |
| <b>Range</b>           | 39-2500 pg/mL  |
| <b>Sensitivity</b>     | 15 pg/mL   |
| <b>Sample Types</b>    | serum, plasma and other biological fluids  |
| <b>Storage</b>         | TMB Substrate, Wash Buffer, Stop Solution at 4°C, all others at -20°C  |
| <b>Note</b>            | For research use only  |
| <b>Expiration Date</b> | 6 months from date of receipt.   |

**Biorbyt Ltd.**

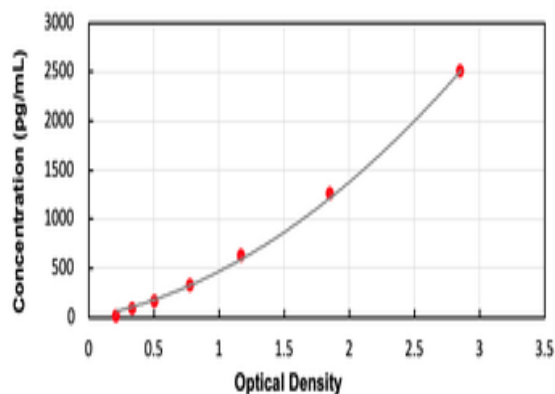
7 Signet Court, Swann Road  
Cambridge  
CB5 8LA  
United Kingdom

Email: [info@biorbyt.com](mailto:info@biorbyt.com), [support@biorbyt.com](mailto:support@biorbyt.com)  
Phone: [+44 \(0\)1223 859353](tel:+44(0)1223859353) | Fax: [+1 \(415\) 651-8558](tel:+1(415)651-8558)

**Biorbyt LLC**

68 TW Alexander Drive  
Research Triangle Park  
Durham  
NC 27713  
United States

Email: [info@biorbyt.com](mailto:info@biorbyt.com), [support@biorbyt.com](mailto:support@biorbyt.com)  
Phone: [+1 \(415\) 906-5211](tel:+1(415)906-5211) | Fax: [+1 \(415\) 651-8558](tel:+1(415)651-8558)



## Biorbyt Ltd.

7 Signet Court, Swann Road  
Cambridge  
CB5 8LA  
United Kingdom

Email: [info@biorbyt.com](mailto:info@biorbyt.com), [support@biorbyt.com](mailto:support@biorbyt.com)

Phone: [+44 \(0\)1223 859353](tel:+44(0)1223859353) | Fax: [+1 \(415\) 651-8558](tel:+1(415)6518558)

## Biorbyt LLC

68 TW Alexander Drive  
Research Triangle Park  
Durham  
NC 27713  
United States

Email: [info@biorbyt.com](mailto:info@biorbyt.com), [support@biorbyt.com](mailto:support@biorbyt.com)

Phone: [+1 \(415\) 906-5211](tel:+1(415)9065211) | Fax: [+1 \(415\) 651-8558](tel:+1(415)6518558)