

Product Datasheet

Goat anti-GDF15 Antibody (orb19065)

Catalog Number	orb19065
Category	Antibodies
Description	Goat polyclonal antibody to GDF15
Target	GDF15
Clonality	Polyclonal
Conjugation	Unconjugated
Reactivity	Human
Buffer/Preservatives	Supplied at 0.5 mg/ml in Tris saline, 0.02% sodium azide, pH 7.3 with 0.5% bovine serum albumin. Aliquot and store at -20°C. Minimize freezing and thawing.
Purification	Purified from goat serum by ammonium sulphate precipitation followed by antigen affinity chromatography using the immunizing peptide.
Protein Sequence	QKTD TGVS LQTYDD
RRID	AB_10749485
MW	34.1
Tested applications	ELISA, FC, IHC, WB
Dilution range	ELISA: 1:2000, WB: 0.1-0.3 µg/ml, IHC-P: 5 µg/ml

Biorbyt Ltd.

7 Signet Court, Swann Road
Cambridge
CB5 8LA
United Kingdom

Email: info@biorbyt.com, support@biorbyt.com

Phone: [+44 \(0\)1223 859353](tel:+44(0)1223859353) | Fax: [+1 \(415\) 651-8558](tel:+1(415)651-8558)

Biorbyt LLC

68 TW Alexander Drive
Research Triangle Park
Durham
NC 27713-2847
United States

Email: info@biorbyt.com, support@biorbyt.com

Phone: [+1 \(415\) 906-5211](tel:+1(415)906-5211) | Fax: [+1 \(415\) 651-8558](tel:+1(415)651-8558)

Application notes

ELISA: Peptide ELISA: antibody detection limit dilution 1:2000.WB: Approx 35 kDa band observed in Human Prostate lysates (calculated MW of 34.1kDa according to NP_004855.1). In transfected HEK293 transiently expressing GDF15 a band of approx. 35 kDa is observed. This band is not observed in the non-transfected HEK293. Recommended concentration: 0.1-0.3 µg/ml.

Storage

Maintain refrigerated at 2-8°C for up to 2 weeks. For long term storage store at -20°C in small aliquots to prevent freeze-thaw cycles.

Note

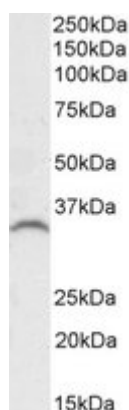
For research use only

Entrez

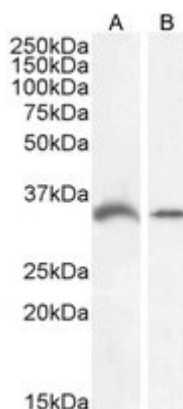
9518

Expiration Date

12 months from date of receipt.



Western blot analysis of Human Prostate lysate using GDF15 antibody.



Western blot analysis of LNCaP (A) and K562 (B) cell lysate using GDF15 antibody

Biorbyt Ltd.

7 Signet Court, Swann Road
Cambridge
CB5 8LA
United Kingdom

Email: info@biorbyt.com, support@biorbyt.com

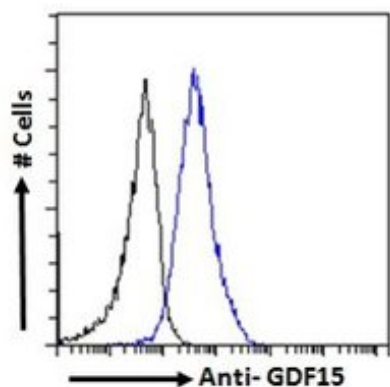
Phone: +44 (0)1223 859353 | Fax: +1 (415) 651-8558

Biorbyt LLC

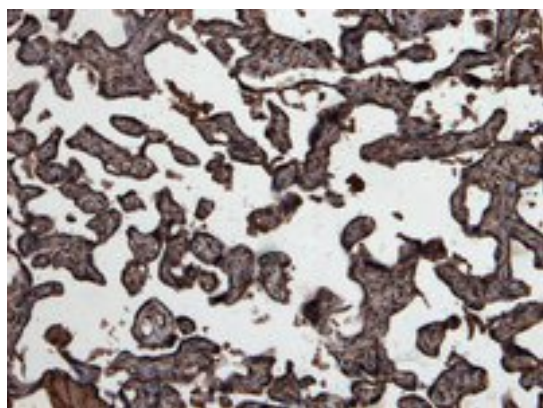
68 TW Alexander Drive
Research Triangle Park
Durham
NC 27713-2847
United States

Email: info@biorbyt.com, support@biorbyt.com

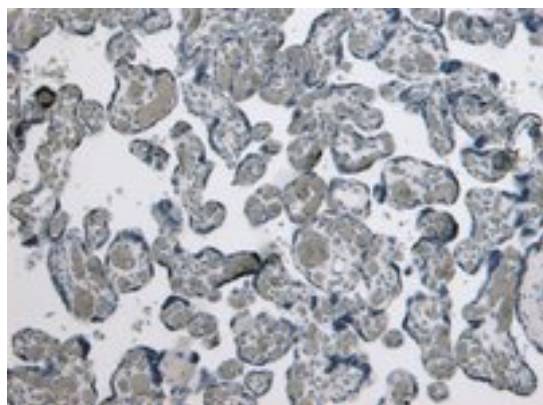
Phone: +1 (415) 906-5211 | Fax: +1 (415) 651-8558



Flow cytometric analysis of paraformaldehyde fixed HeLa cells using GDF15 antibody



Immunohistochemical staining of Human Placenta using GDF15 antibody



Immunohistochemical staining of Human Placenta using GDF15 antibody

Biorbyt Ltd.

7 Signet Court, Swann Road
Cambridge
CB5 8LA
United Kingdom

Email: info@biorbyt.com, support@biorbyt.com

Phone: [+44 \(0\)1223 859353](tel:+44(0)1223859353) | Fax: [+1 \(415\) 651-8558](tel:+1(415)651-8558)

Biorbyt LLC

68 TW Alexander Drive
Research Triangle Park
Durham
NC 27713-2847
United States

Email: info@biorbyt.com, support@biorbyt.com

Phone: [+1 \(415\) 906-5211](tel:+1(415)906-5211) | Fax: [+1 \(415\) 651-8558](tel:+1(415)651-8558)