

Product Datasheet

SPFH2/ERLIN2 Antibody (orb19057)

Catalog Number	orb19057
Category	Antibodies
Description	Goat polyclonal antibody to ERLIN2
Target	SPFH2 / ERLIN2
Clonality	Polyclonal
Species/Host	Goat
Conjugation	Unconjugated
Reactivity	Human
Predicted Reactivity	Rat
Buffer/Preservatives	Supplied at 0.5 mg/ml in Tris saline, 0.02% sodium azide, pH 7.3 with 0.5% bovine serum albumin. Aliquot and store at -20°C. Minimize freezing and thawing.
Purification	Purified from goat serum by ammonium sulphate precipitation followed by antigen affinity chromatography using the immunizing peptide.
Protein Sequence	EDEPLETATKEN
RRID	AB_10767260
MW	37.8
Tested applications	ELISA, IHC, WB
Dilution range	ELISA: 1:2000, WB: 0.3-1 µg/ml, IHC-P: 3.75 µg/ml

Biorbyt Ltd.

7 Signet Court, Swann Road
Cambridge
CB5 8LA
United Kingdom

Email: info@biorbyt.com, support@biorbyt.com

Phone: [+44 \(0\)1223 859353](tel:+44(0)1223859353) | Fax: [+1 \(415\) 651-8558](tel:+1(415)651-8558)

Biorbyt LLC

68 TW Alexander Drive
Research Triangle Park
Durham
NC 27713
United States

Email: info@biorbyt.com, support@biorbyt.com

Phone: [+1 \(415\) 906-5211](tel:+1(415)906-5211) | Fax: [+1 \(415\) 651-8558](tel:+1(415)651-8558)

Application notes

ELISA: Peptide ELISA: antibody detection limit dilution 1:2000.WB: Approx 43kDa band observed in Human Breast lysates and in lysates of Human Breast cancer (calculated MW of 37.8kDa according to NP_009106.1). The observed molecular weight corresponds to earlier findings in literature with different antibodies (Pearce et al, J Biol Chem. 2007 Jul 13;282(28):20104-15.; PMID: 17502376). Recommended concentration: 0.3-1 µg/ml.

Storage

Maintain refrigerated at 2-8°C for up to 2 weeks. For long term storage store at -20°C in small aliquots to prevent freeze-thaw cycles.

Note

For research use only

Entrez

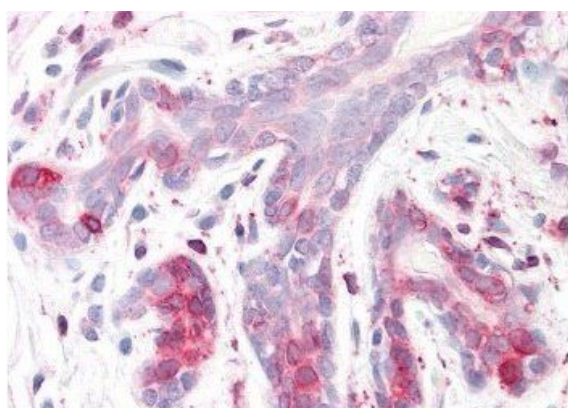
11160

Expiration Date

12 months from date of receipt.



orb19057 staining (1µg/ml) of Human Breast lysate (RIPA buffer, 30µg total protein per lane). Primary incubated for 1 hour. Detected by western blot using chemiluminescence.



Immunohistochemical staining of Human Breast using ERLIN2 antibody

Biorbyt Ltd.

7 Signet Court, Swann Road
Cambridge
CB5 8LA
United Kingdom

Email: info@biorbyt.com, support@biorbyt.com

Phone: +44 (0)1223 859353 | Fax: +1 (415) 651-8558

Biorbyt LLC

68 TW Alexander Drive
Research Triangle Park
Durham
NC 27713
United States

Email: info@biorbyt.com, support@biorbyt.com

Phone: +1 (415) 906-5211 | Fax: +1 (415) 651-8558