

Product Datasheet

Caveolin 1 Antibody (orb19043)

Catalog Number	orb19043
Category	Antibodies
Description	Goat polyclonal antibody to Caveolin 1
Target	Caveolin 1
Clonality	Polyclonal
Species/Host	Goat
Conjugation	Unconjugated
Reactivity	Human
Predicted Reactivity	Canine, Mouse, Porcine, Rat
Buffer/Preservatives	Supplied at 0.5 mg/ml in Tris saline, 0.02% sodium azide, pH 7.3 with 0.5% bovine serum albumin. Aliquot and store at -20°C. Minimize freezing and thawing.
Purification	Purified from goat serum by ammonium sulphate precipitation followed by antigen affinity chromatography using the immunizing peptide.
Protein Sequence	DELSEKQVYDAH
RRID	AB_10753008
MW	20.5; 17.0
Tested applications	ELISA, FC, IF, IHC, WB
Dilution range	ELISA: 1:8000, WB: 0.001-0.01 µg/ml, IHC-P: 2.5µg/ml, FACS: 10ug/ml, IF/ICC: 10µg/ml.

Biorbyt Ltd.

7 Signet Court, Swann Road
Cambridge
CB5 8LA
United Kingdom

Email: info@biorbyt.com, support@biorbyt.com

Phone: [+44 \(0\)1223 859353](tel:+44(0)1223859353) | Fax: [+1 \(415\) 651-8558](tel:+1(415)651-8558)

Biorbyt LLC

68 TW Alexander Drive
Research Triangle Park
Durham
NC 27713-2847
United States

Email: info@biorbyt.com, support@biorbyt.com

Phone: [+1 \(415\) 906-5211](tel:+1(415)906-5211) | Fax: [+1 \(415\) 651-8558](tel:+1(415)651-8558)

Application notes

ELISA: Peptide ELISA: antibody detection limit dilution 1:32000.WB: Approx 21kDa and 25kDa observed in Human Heart, Lung and Spleen lysates. These bands correspond to earlier findings in literature with different antibodies (Wiechen et al Am J Pathol. 2001 Mar;158(3):833-9, PMID: 11238032). In transfected HEK293 transiently expressing Caveolin 1 a band of approx. 23kDa is observed. This band is not observed in the non-transfected HEK293. This protein has a calculated MW of 20.5kDa according to NP_001744.2. Recommended concentration: 0.3-1 µg/ml.

Storage

Maintain refrigerated at 2-8°C for up to 2 weeks. For long term storage store at -20°C in small aliquots to prevent freeze-thaw cycles.

Note

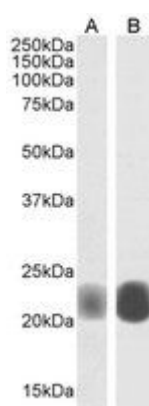
For research use only

Entrez

857

Expiration Date

12 months from date of receipt.



WB analysis of A431 (A) and A549 cell lysate using Caveolin 1 antibody



WB analysis of Human Heart using Caveolin 1 antibody

Biorbyt Ltd.

7 Signet Court, Swann Road
Cambridge
CB5 8LA
United Kingdom

Email: info@biorbyt.com, support@biorbyt.com

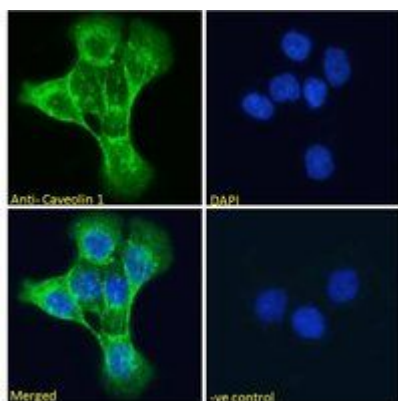
Phone: [+44 \(0\)1223 859353](tel:+44(0)1223859353) | Fax: [+1 \(415\) 651-8558](tel:+1(415)651-8558)

Biorbyt LLC

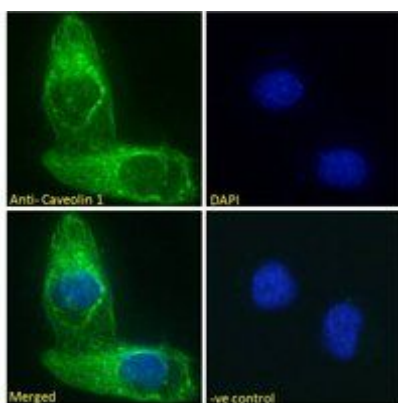
68 TW Alexander Drive
Research Triangle Park
Durham
NC 27713-2847
United States

Email: info@biorbyt.com, support@biorbyt.com

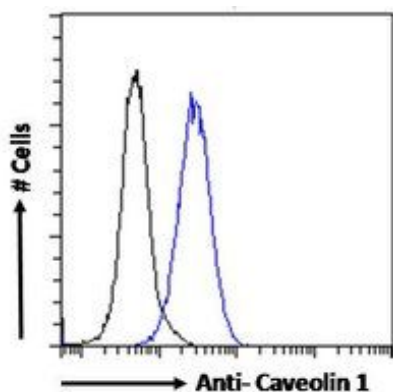
Phone: [+1 \(415\) 906-5211](tel:+1(415)906-5211) | Fax: [+1 \(415\) 651-8558](tel:+1(415)651-8558)



Immunofluorescence analysis of A431 cells using Caveolin 1 antibody



Immunofluorescence analysis of U2OS cells using Caveolin 1 antibody



Flow cytometric analysis of HeLa cells using Caveolin 1 antibody

Biorbyt Ltd.

7 Signet Court, Swann Road
Cambridge
CB5 8LA
United Kingdom

Email: info@biorbyt.com, support@biorbyt.com

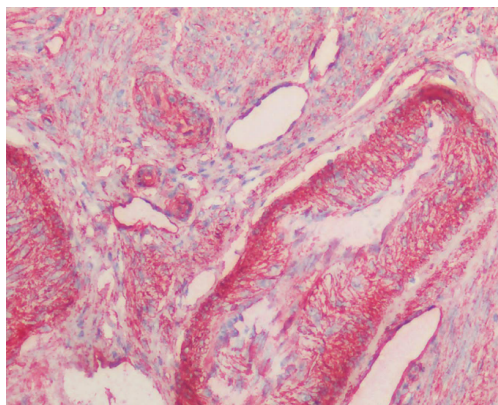
Phone: +44 (0)1223 859353 | Fax: +1 (415) 651-8558

Biorbyt LLC

68 TW Alexander Drive
Research Triangle Park
Durham
NC 27713-2847
United States

Email: info@biorbyt.com, support@biorbyt.com

Phone: +1 (415) 906-5211 | Fax: +1 (415) 651-8558



Immunohistochemical staining of Human Uterus using Caveolin 1 antibody.

Biorbyt Ltd.

7 Signet Court, Swann Road
Cambridge
CB5 8LA
United Kingdom

Email: info@biorbyt.com, support@biorbyt.com

Phone: [+44 \(0\)1223 859353](tel:+44(0)1223859353) | Fax: [+1 \(415\) 651-8558](tel:+1(415)651-8558)

Biorbyt LLC

68 TW Alexander Drive
Research Triangle Park
Durham
NC 27713-2847
United States

Email: info@biorbyt.com, support@biorbyt.com

Phone: [+1 \(415\) 906-5211](tel:+1(415)906-5211) | Fax: [+1 \(415\) 651-8558](tel:+1(415)651-8558)