

## Product Datasheet

# GAPDH (C Terminus) Loading Control Antibody (orb18774)

<b>Catalog Number</b>	orb18774
<b>Category</b>	Antibodies
<b>Description</b>	Goat polyclonal antibody to GAPDH
<b>Target</b>	GAPDH (C Terminus) Loading Control
<b>Clonality</b>	Polyclonal
<b>Species/Host</b>	Goat
<b>Conjugation</b>	Unconjugated
<b>Reactivity</b>	Human, Rat
<b>Predicted Reactivity</b>	Canine, Mouse, Porcine
<b>Buffer/Preservatives</b>	Supplied at 0.5 mg/ml in Tris saline, 0.02% sodium azide, pH 7.3 with 0.5% bovine serum albumin. Aliquot and store at -20°C. Minimize freezing and thawing.
<b>Purification</b>	Purified from goat serum by ammonium sulphate precipitation followed by antigen affinity chromatography using the immunizing peptide.
<b>Protein Sequence</b>	HQVSSDFNSDT
<b>RRID</b>	AB_10750737
<b>MW</b>	36.1
<b>Tested applications</b>	ELISA, IF, IHC, WB

**Biorbyt Ltd.**

7 Signet Court, Swann Road  
Cambridge  
CB5 8LA  
United Kingdom

Email: [info@biorbyt.com](mailto:info@biorbyt.com), [support@biorbyt.com](mailto:support@biorbyt.com)

Phone: [+44 \(0\)1223 859353](tel:+44(0)1223859353) | Fax: [+1 \(415\) 651-8558](tel:+1(415)651-8558)

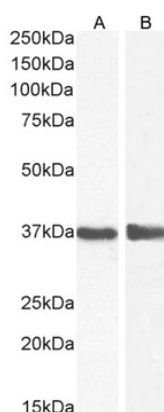
**Biorbyt LLC**

68 TW Alexander Drive  
Research Triangle Park  
Durham  
NC 27713  
United States

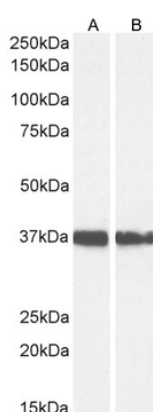
Email: [info@biorbyt.com](mailto:info@biorbyt.com), [support@biorbyt.com](mailto:support@biorbyt.com)

Phone: [+1 \(415\) 906-5211](tel:+1(415)906-5211) | Fax: [+1 \(415\) 651-8558](tel:+1(415)651-8558)

<b>Dilution range</b>	ELISA: 1:128000, WB: 0.001-0.003 µg/ml, IHC-P: 2.5 µg/ml, IF/ICC: 10µg/ml
<b>Application notes</b>	ELISA: Peptide ELISA: antibody detection limit dilution 1:2000.WB: Approx 35kDa band observed in lysates of Human Tonsil, Mouse Spleen, and cell lines HeLa, A431 and 293 (calculated MW of 36.1kDa according to NP_002037). Recommended concentration: 0.01-0.03 µg/ml.
<b>Storage</b>	Maintain refrigerated at 2-8°C for up to 2 weeks. For long term storage store at -20°C in small aliquots to prevent freeze-thaw cycles.
<b>Note</b>	For research use only
<b>Entrez</b>	<b>2597</b>
<b>Expiration Date</b>	12 months from date of receipt.



0.1 µg/ml staining of Human Liver (A) and (1 ug/ml) Mouse Spleen (B) lysate (35 µg protein in RIPA buffer). Detected by chemiluminescence.



0.1 µg/ml staining of HEK293 (A) and HeLa (B) cell lysate (35 µg protein in RIPA buffer). Detected by chemiluminescence.

**Biorbyt Ltd.**

7 Signet Court, Swann Road  
Cambridge  
CB5 8LA  
United Kingdom

Email: [info@biorbyt.com](mailto:info@biorbyt.com), [support@biorbyt.com](mailto:support@biorbyt.com)

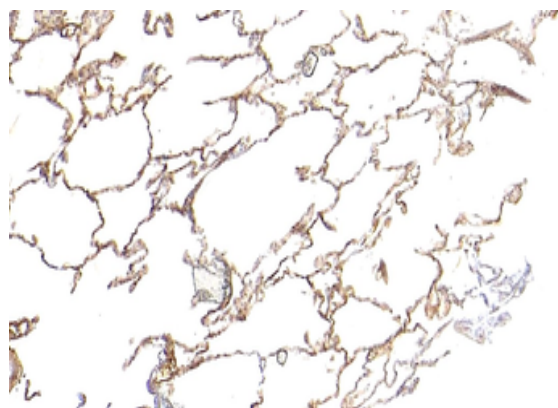
Phone: +44 (0)1223 859353 | Fax: +1 (415) 651-8558

**Biorbyt LLC**

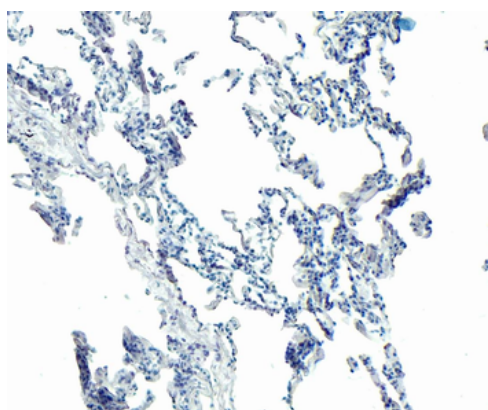
68 TW Alexander Drive  
Research Triangle Park  
Durham  
NC 27713  
United States

Email: [info@biorbyt.com](mailto:info@biorbyt.com), [support@biorbyt.com](mailto:support@biorbyt.com)

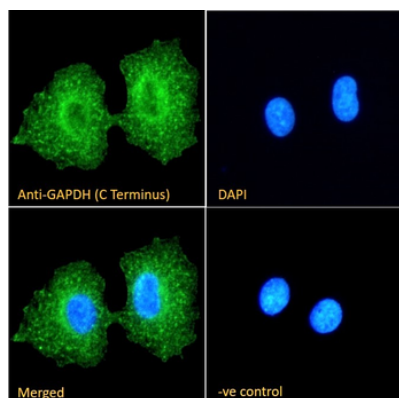
Phone: +1 (415) 906-5211 | Fax: +1 (415) 651-8558



5 µg/ml staining of paraffin embedded Human Lung. Heat induced antigen retrieval with citrate buffer pH6, HRP-staining.



Negative Control showing staining of paraffin embedded Human Lung, with no primary antibody.



Immunofluorescence analysis of paraformaldehyde fixed A549. Primary incubation 1hr (1:50 dilution) followed by Alexa Fluor® 488 secondary antibody (1:2000 dilution), showing cytoplasmic, membrane and cytoplasmic bodies staining. The nuclear stain is DAPI (blue). Negative control: Anti-Goat IgG followed by Alexa Fluor® 488 secondary antibody.

**Biorbyt Ltd.**

7 Signet Court, Swann Road  
Cambridge  
CB5 8LA  
United Kingdom

Email: [info@biorbyt.com](mailto:info@biorbyt.com), [support@biorbyt.com](mailto:support@biorbyt.com)

Phone: +44 (0)1223 859353 | Fax: +1 (415) 651-8558

**Biorbyt LLC**

68 TW Alexander Drive  
Research Triangle Park  
Durham  
NC 27713  
United States

Email: [info@biorbyt.com](mailto:info@biorbyt.com), [support@biorbyt.com](mailto:support@biorbyt.com)

Phone: +1 (415) 906-5211 | Fax: +1 (415) 651-8558