

Product Datasheet

KAP1/TRIM28 Antibody (orb18424)

Catalog Number	orb18424
Category	Antibodies
Description	Goat polyclonal antibody to TRIM28
Target	KAP1 / TRIM28
Clonality	Polyclonal
Species/Host	Goat
Conjugation	Unconjugated
Reactivity	Human
Predicted Reactivity	Mouse
Buffer/Preservatives	Supplied at 0.5 mg/ml in Tris saline, 0.02% sodium azide, pH 7.3 with 0.5% bovine serum albumin. Aliquot and store at -20°C. Minimize freezing and thawing.
Purification	Purified from goat serum by ammonium sulphate precipitation followed by antigen affinity chromatography using the immunizing peptide.
Protein Sequence	SSQELSGGPGDGP
RRID	AB_10751873
MW	88.5
Tested applications	ELISA, FC, IF, IHC
Dilution range	ELISA: 1:2000, IHC-P: 2-4 µg/ml

Biorbyt Ltd.

7 Signet Court, Swann Road
Cambridge
CB5 8LA
United Kingdom

Email: info@biorbyt.com, support@biorbyt.com

Phone: [+44 \(0\)1223 859353](tel:+44(0)1223859353) | Fax: [+1 \(415\) 651-8558](tel:+1(415)651-8558)

Biorbyt LLC

68 TW Alexander Drive
Research Triangle Park
Durham
NC 27713
United States

Email: info@biorbyt.com, support@biorbyt.com

Phone: [+1 \(415\) 906-5211](tel:+1(415)906-5211) | Fax: [+1 \(415\) 651-8558](tel:+1(415)651-8558)

Application notes

ELISA: Peptide ELISA: antibody detection limit dilution 1:8000.IHC: This product has been successfully used on Human gastric cancer surgical specimens: Yokoe et al, Ann Surg Oncol. 2009 Nov 7. [Epub ahead of print]. (PMID: 19898899). Recommended concentration: 5ug/ml.WB: Approx 100-120kDa band seen in HepG2 lysate. Recommended for use at 0.2-1 µg/ml (Predicted MW approx 92kDa according to NP_005753).Experiment Notes: Immunofluorescence: Successfully used on mouse embryo at the late zygote stage, 5ug/ml (personal communication).

Storage

Maintain refrigerated at 2-8°C for up to 2 weeks. For long term storage store at -20°C in small aliquots to prevent freeze-thaw cycles.

Note

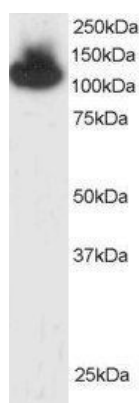
For research use only

Entrez

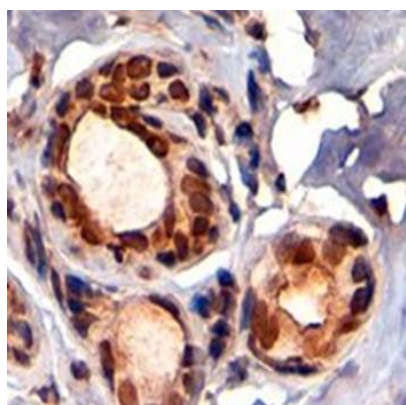
10155

Expiration Date

12 months from date of receipt.



orb18424 staining (0.5ug/ml) of HepG2 lysate (RIPA buffer, 30ug total protein per lane). Primary incubated for 1 hour. Detected by western blot using chemiluminescence.



Immunohistochemical analysis of formalin-fixed and paraffin embedded Human Breast using KAP1 antibody

Biorbyt Ltd.

7 Signet Court, Swann Road
Cambridge
CB5 8LA
United Kingdom

Email: info@biorbyt.com, support@biorbyt.com

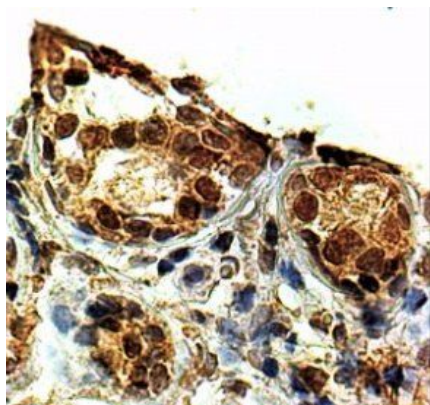
Phone: +44 (0)1223 859353 | Fax: +1 (415) 651-8558

Biorbyt LLC

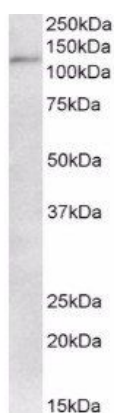
68 TW Alexander Drive
Research Triangle Park
Durham
NC 27713
United States

Email: info@biorbyt.com, support@biorbyt.com

Phone: +1 (415) 906-5211 | Fax: +1 (415) 651-8558



Immunohistochemical staining of Human Breast using TRIM28 antibody



Western blot analysis of HepG2 lysate using TRIM28 antibody

Biorbyt Ltd.

7 Signet Court, Swann Road
Cambridge
CB5 8LA
United Kingdom

Email: info@biorbyt.com, support@biorbyt.com

Phone: [+44 \(0\)1223 859353](tel:+44(0)1223859353) | Fax: [+1 \(415\) 651-8558](tel:+1(415)651-8558)

Biorbyt LLC

68 TW Alexander Drive
Research Triangle Park
Durham
NC 27713
United States

Email: info@biorbyt.com, support@biorbyt.com

Phone: [+1 \(415\) 906-5211](tel:+1(415)906-5211) | Fax: [+1 \(415\) 651-8558](tel:+1(415)651-8558)