

## Product Datasheet

### SIGLEC10 Antibody (orb1825022)

<b>Catalog Number</b>	orb1825022
<b>Description</b>	<p>Siglec-10 (sialic acid-binding Ig-like lectin 10) is a 697 amino acid protein belonging to the immunoglobulin superfamily. The N-terminal Ig-like domain of Siglec-10 contains a sialic acid-binding site and the C-terminal cytoplasmic region of Siglec-10 contains two immunoreceptor tyrosine-based inhibitor motifs (ITIMs), which are involved in the modulation of cellular responses through SH2 domains. With most expression in spleen, bone marrow and peripheral blood lymphocytes, such as monocytes, natural killer cells and eosinophils, it is likely that Siglec-10 functions as an inhibitory receptor in the immune response. Importantly, Siglec-10 mRNA is found to be highly upregulated in eosinophils at sites of inflammation in asthmatics, suggesting that Siglec-10 may be an appropriate target for new approaches of immunomodulatory therapy. There are six named isoforms of Siglec-10 that are a result of alternative splicing. All isoforms exists as single-pass transmembrane proteins, except for isoform 6, which is secreted.</p>
<b>Species/Host</b>	Mouse
<b>Reactivity</b>	Human
<b>Conjugation</b>	Unconjugated
<b>Tested Applications</b>	IHC-P
<b>Immunogen</b>	A recombinant partial protein sequence (within amino acids 500-697) from the human protein was used as the immunogen for the SIGLEC10 antibody.
<b>Storage</b>	Maintain refrigerated at 2-8°C for up to 2 weeks. For long term storage store at -20°C in small aliquots to prevent freeze-thaw cycles.
<b>Note</b>	For research use only
<b>Formula</b>	1 mg/ml in 1X PBS; BSA free, sodium azide free
<b>Isotype</b>	Mouse IgG2, kappa

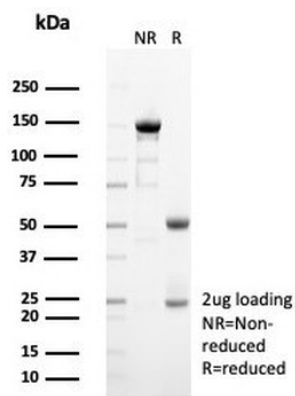
#### Biorbyt Ltd.

7 Signet Court, Swann's Road,  
Cambridge, CB5 8LA, United Kingdom  
Email: [info@biorbyt.com](mailto:info@biorbyt.com), [support@biorbyt.com](mailto:support@biorbyt.com)  
Phone: [+44 \(0\) 1223 859-353](tel:+44(0)1223859353) | Fax: [+1 \(415\) 651-8558](tel:+1(415)6518558)

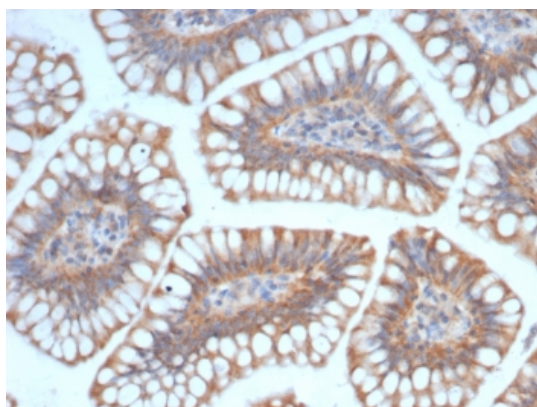
#### Biorbyt LLC.

68 TW Alexander Drive,  
Durham, NC, 27713, United States  
Email: [info@biorbyt.com](mailto:info@biorbyt.com), [support@biorbyt.com](mailto:support@biorbyt.com)  
Phone: [+1 \(415\) 906-5211](tel:+1(415)9065211) | Fax: [+1 \(415\) 651-8558](tel:+1(415)6518558)

<b>Clonality</b>	Monoclonal
<b>Clone Number</b>	SIGLEC10/7582
<b>Antibody Type</b>	Primary Antibody
<b>Uniprot ID</b>	<b>Q96LC7</b>
<b>Hazard Information</b>	This SIGLEC10 antibody is available for research use only.
<b>Dilution Range</b>	Immunohistochemistry (FFPE): 1-2ug/ml for 30 min at RT
<b>Expiration Date</b>	12 months from date of receipt.



SDS-PAGE analysis of purified, BSA-free SIGLEC10 antibody (clone SIGLEC10/7582) as confirmation of integrity and purity.



IHC staining of FFPE human small intestine tissue with SIGLEC10 antibody (clone SIGLEC10/7582). HIER: boil tissue sections in pH9 10 mM Tris with 1 mM EDTA for 20 min and allow to cool before testing.

**Biorbyt Ltd.**

7 Signet Court, Swann's Road,  
Cambridge, CB5 8LA, United Kingdom  
Email: [info@biorbyt.com](mailto:info@biorbyt.com), [support@biorbyt.com](mailto:support@biorbyt.com)  
Phone: [+44 \(0\) 1223 859-353](tel:+44(0)1223859353) | Fax: [+1 \(415\) 651-8558](tel:+1(415)6518558)

**Biorbyt LLC.**

68 TW Alexander Drive,  
Durham, NC, 27713, United States  
Email: [info@biorbyt.com](mailto:info@biorbyt.com), [support@biorbyt.com](mailto:support@biorbyt.com)  
Phone: [+1 \(415\) 906-5211](tel:+1(415)9065211) | Fax: [+1 \(415\) 651-8558](tel:+1(415)6518558)