

Product Datasheet

Cofilin/CFL1 Rabbit Polyclonal Antibody (orb182365)

Catalog Number	orb182365
Category	Antibodies
Description	Cofilin/CFL1 Rabbit Polyclonal Antibody
Target	Cofilin-1
Clonality	Polyclonal
Species/Host	Rabbit
Isotype	Rabbit IgG
Conjugation	Unconjugated
Reactivity	Human, Monkey, Mouse, Rat
Form/Appearance	Lyophilized
Concentration	Adding 0.2 ml of distilled water will yield a concentration of 500 µg/ml.
Buffer/Preservatives	Each vial contains antibody formulated with stabilizing components, 0.9 mg NaCl, 0.2 mg Na ₂ HPO ₄ , and 0.05 mg Na ₃ N. *This antibody is supplied in a stabilized formulation. Compatibility with conjugation reactions depends on the chemistry of the conjugation method used. For conjugation methods that are not compatible with the stabilizing components present in this formulation, a carrier-free antibody format is required.
Reconstitution	Add 0.2ml of distilled water will yield a concentration of 500ug/ml.
Purification	Immunogen affinity purified.

Biorbyt Ltd.

7 Signet Court, Swann Road
Cambridge
CB5 8LA
United Kingdom

Email: info@biorbyt.com, support@biorbyt.com

Phone: [+44 \(0\)1223 859353](tel:+44(0)1223859353) | Fax: [+1 \(415\) 651-8558](tel:+1(415)651-8558)

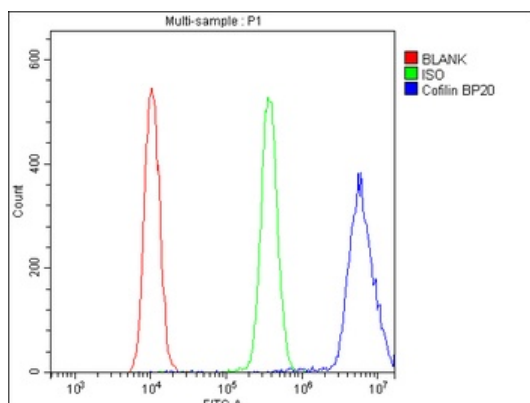
Biorbyt LLC

68 TW Alexander Drive
Research Triangle Park
Durham
NC 27713-2847
United States

Email: info@biorbyt.com, support@biorbyt.com

Phone: [+1 \(415\) 906-5211](tel:+1(415)906-5211) | Fax: [+1 \(415\) 651-8558](tel:+1(415)651-8558)

Immunogen	E.coli-derived human Cofilin recombinant protein (Position: A2-L166). Human Cofilin shares 99% amino acid (aa) sequences identity with both mouse and rat Cofilin.
UniProt ID	P23528
MW	19 kDa
Tested applications	ELISA, FC, ICC, IF, IHC, IHC-Fr, WB
Dilution range	Western blot, 0.1-0.5µg/ml, Human, Mouse, Rat, Monkey Immunohistochemistry (Paraffin-embedded Section), 0.5-1µg/ml, Human, Mouse, Rat Immunohistochemistry (Frozen Section), 0.5-1µg/ml, Human Immunocytochemistry/Immunofluorescence, 2µg/ml, Human Flow Cytometry (Fixed), 1-3µg/1x10 ⁶ cells, Human ELISA, 0.1-0.5µg/ml, -
Specificity	No cross reactivity with other proteins.
Cross Reactivity	No cross-reactivity with other proteins
Antibody Type	Primary Antibody
Storage	Maintain refrigerated at 2-8°C for up to 2 weeks. For long term storage store at -20°C in small aliquots to prevent freeze-thaw cycles.
Note	For research use only
Expiration Date	12 months from date of receipt.



Flow Cytometry analysis of U20S cells using anti-Cofilin antibody (Blue line). Isotype control antibody (Green line) was rabbit IgG. Unlabelled sample (Red line) was also used as a control.

Biorbyt Ltd.

7 Signet Court, Swann Road
Cambridge
CB5 8LA
United Kingdom

Email: info@biorbyt.com, support@biorbyt.com

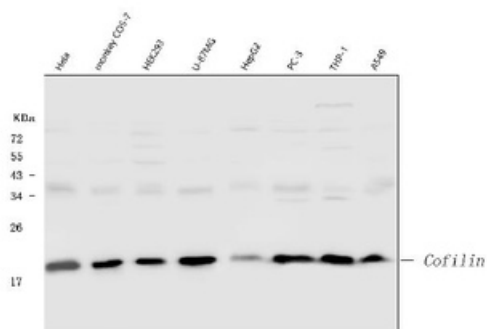
Phone: +44 (0)1223 859353 | Fax: +1 (415) 651-8558

Biorbyt LLC

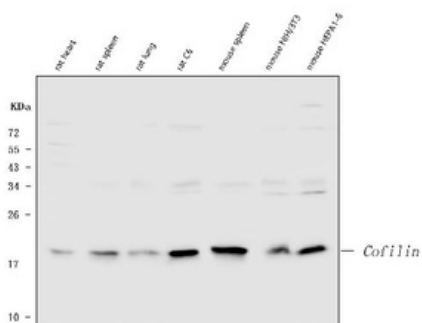
68 TW Alexander Drive
Research Triangle Park
Durham
NC 27713-2847
United States

Email: info@biorbyt.com, support@biorbyt.com

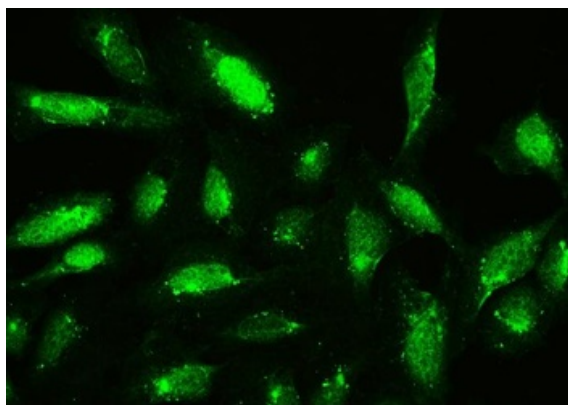
Phone: +1 (415) 906-5211 | Fax: +1 (415) 651-8558



WB analysis of Cofilin using anti-Cofilin antibody. Lane 1: human HeLa cell; 2: monkey COS-7 cell; 3: human HEK293 cell; 4: human U-87MG cell; 5: human HepG2 cell; 6: human PC-3 cell; 7: human THP-1 cell; 8: human A549 cell.



WB analysis of Cofilin using anti-Cofilin antibody. Lane 1: rat heart tissue; 2: rat spleen tissue; 3: rat lung tissue; 4: rat C6 cell; 5: mouse spleen tissue; 6: mouse NIH/3T3 cell; 7: mouse HEPA1-6 cell.



IF analysis of Cofilin using anti-Cofilin antibody. Cofilin was detected in immunocytochemical section of U2OS cell.

Biorbyt Ltd.

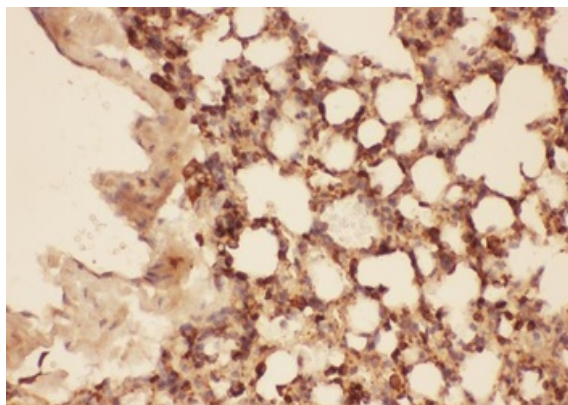
7 Signet Court, Swann Road
Cambridge
CB5 8LA
United Kingdom

Email: info@biorbyt.com, support@biorbyt.com
Phone: +44 (0)1223 859353 | Fax: +1 (415) 651-8558

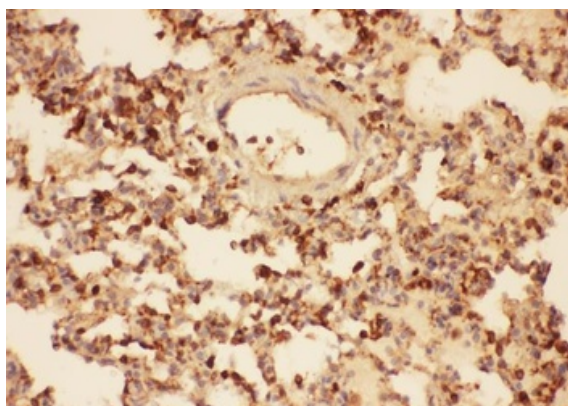
Biorbyt LLC

68 TW Alexander Drive
Research Triangle Park
Durham
NC 27713-2847
United States

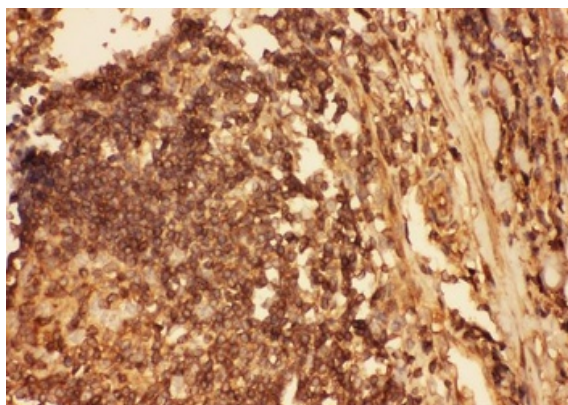
Email: info@biorbyt.com, support@biorbyt.com
Phone: +1 (415) 906-5211 | Fax: +1 (415) 651-8558



IHC analysis of Cofilin using anti-Cofilin antibody. Cofilin was detected in paraffin-embedded section of mouse lung tissues.



IHC analysis of Cofilin using anti-Cofilin antibody. Cofilin was detected in paraffin-embedded section of rat lung tissues.



IHC analysis of Cofilin using anti-Cofilin antibody. Cofilin was detected in paraffin-embedded section of human intestinal cancer tissues.

Biorbyt Ltd.

7 Signet Court, Swann Road
Cambridge
CB5 8LA
United Kingdom

Email: info@biorbyt.com, support@biorbyt.com

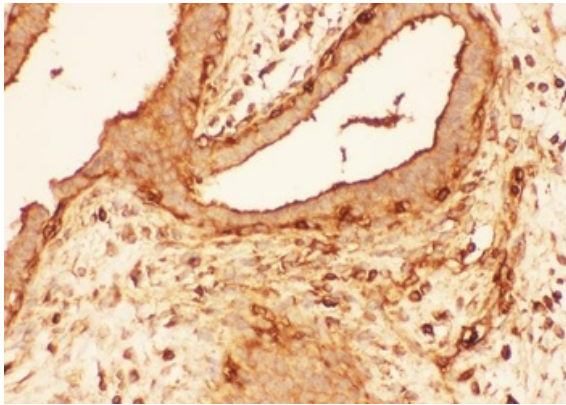
Phone: [+44 \(0\)1223 859353](tel:+44(0)1223859353) | Fax: [+1 \(415\) 651-8558](tel:+1(415)651-8558)

Biorbyt LLC

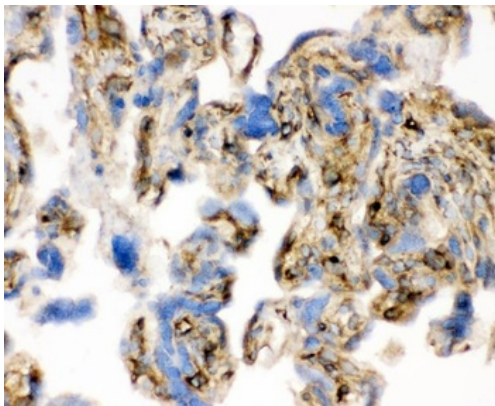
68 TW Alexander Drive
Research Triangle Park
Durham
NC 27713-2847
United States

Email: info@biorbyt.com, support@biorbyt.com

Phone: [+1 \(415\) 906-5211](tel:+1(415)906-5211) | Fax: [+1 \(415\) 651-8558](tel:+1(415)651-8558)



IHC analysis of Cofilin using anti-Cofilin antibody. Cofilin was detected in paraffin-embedded section of human mammary cancer tissues.



IHC analysis of Cofilin using anti-Cofilin antibody. Cofilin was detected in frozen section of human placenta tissues.

Biorbyt Ltd.

7 Signet Court, Swann Road
Cambridge
CB5 8LA
United Kingdom

Email: info@biorbyt.com, support@biorbyt.com

Phone: [+44 \(0\)1223 859353](tel:+44(0)1223859353) | Fax: [+1 \(415\) 651-8558](tel:+1(415)651-8558)

Biorbyt LLC

68 TW Alexander Drive
Research Triangle Park
Durham
NC 27713-2847
United States

Email: info@biorbyt.com, support@biorbyt.com

Phone: [+1 \(415\) 906-5211](tel:+1(415)906-5211) | Fax: [+1 \(415\) 651-8558](tel:+1(415)651-8558)