

## Product Datasheet

### Claudin18.2 Antibody (orb1823573)

|                            |  |
|----------------------------|--|
| <b>Catalog Number</b>      | orb1823573   |
| <b>Description</b>         | <p>The claudin superfamily consists of many structurally related proteins in humans. These proteins are important structural and functional components of tight junctions in paracellular transport. Claudins are located in both epithelial and endothelial cells in all tight junction-bearing tissues. Three classes of proteins are known to localize to tight junctions, including the claudins, occludin and junction adhesion molecule. Claudins, which consist of four transmembrane domains and two extracellular loops, make up tight junction strands. Emerging evidence suggests that the claudin family of proteins regulates transport through tight junctions via differential discrimination for solute size and charge. Claudin expression is often highly restricted to specific regions of different tissues and may have an important role in transcellular transport through tight junctions.</p> |
| <b>Species/Host</b>        | Rabbit   |
| <b>Reactivity</b>          | Human  |
| <b>Conjugation</b>         | Unconjugated   |
| <b>Tested Applications</b> | IHC-P  |
| <b>Immunogen</b>           | A recombinant partial protein sequence (within amino acids 1-100) from the human protein was used as the immunogen for the Claudin18.2 antibody.   |
| <b>Storage</b>             | Maintain refrigerated at 2-8°C for up to 2 weeks. For long term storage store at -20°C in small aliquots to prevent freeze-thaw cycles.  |
| <b>Note</b>                | For research use only  |
| <b>Formula</b>             | 1 mg/ml in 1X PBS; BSA free, sodium azide free   |
| <b>Isotype</b>             | Rabbit IgG, kappa  |
| <b>Clonality</b>           | Recombinant  |

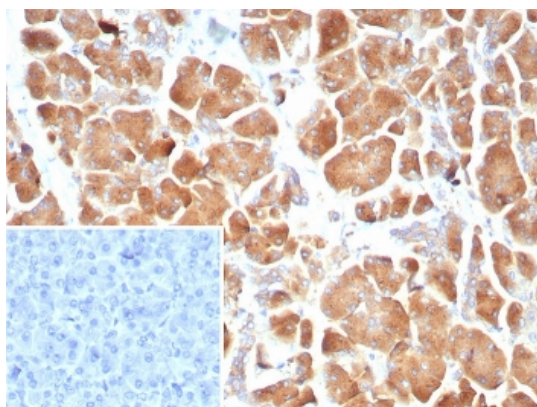
#### Biorbyt Ltd.

7 Signet Court, Swann's Road,  
Cambridge, CB5 8LA, United Kingdom  
Email: [info@biorbyt.com](mailto:info@biorbyt.com), [support@biorbyt.com](mailto:support@biorbyt.com)  
Phone: [+44 \(0\) 1223 859-353](tel:+44201223859353) | Fax: [+1 \(415\) 651-8558](tel:+14156518558)

#### Biorbyt LLC.

68 TW Alexander Drive,  
Durham, NC, 27713, United States  
Email: [info@biorbyt.com](mailto:info@biorbyt.com), [support@biorbyt.com](mailto:support@biorbyt.com)  
Phone: [+1 \(415\) 906-5211](tel:+14159065211) | Fax: [+1 \(415\) 651-8558](tel:+14156518558)

|                           |   |
|---------------------------|---|
| <b>Clone Number</b>       | CLDN18.2/8559R  |
| <b>Antibody Type</b>      | Primary Antibody  |
| <b>Uniprot ID</b>         | <b>P56856</b>   |
| <b>Hazard Information</b> | This Claudin18.2 antibody is available for research use only. |
| <b>Dilution Range</b>     | Immunohistochemistry (FFPE): 1-2ug/ml for 30 min at RT        |
| <b>Expiration Date</b>    | 12 months from date of receipt.                               |



IHC staining of FFPE human pancreas tissue with Claudin18.2 antibody (clone CLDN18.2/8559R). Inset: PBS used in place of primary Ab (secondary Ab negative control). HIER: boil tissue sections in pH9 10 mM Tris with 1 mM EDTA for 20 min and allow to cool before testing.

**Biorbyt Ltd.**

7 Signet Court, Swann's Road,  
Cambridge, CB5 8LA, United Kingdom  
Email: [info@biorbyt.com](mailto:info@biorbyt.com), [support@biorbyt.com](mailto:support@biorbyt.com)  
Phone: [+44 \(0\) 1223 859-353](tel:+44(0)1223859353) | Fax: [+1 \(415\) 651-8558](tel:+1(415)6518558)

**Biorbyt LLC.**

68 TW Alexander Drive,  
Durham, NC, 27713, United States  
Email: [info@biorbyt.com](mailto:info@biorbyt.com), [support@biorbyt.com](mailto:support@biorbyt.com)  
Phone: [+1 \(415\) 906-5211](tel:+1(415)9065211) | Fax: [+1 \(415\) 651-8558](tel:+1(415)6518558)