

Product Datasheet

AHA1 Antibody (orb1822461)

Catalog Number	orb1822461
Category	Antibodies
Description	Rat Anti-Mouse AHA1 Monoclonal IgG2a Kappa
Target	AHA1
Clonality	Monoclonal
Species/Host	Rat
Isotype	IgG2a Kappa
Conjugation	Unconjugated
Reactivity	Human, Mouse, Rat
Concentration	1 mg/ml
Buffer/Preservatives	0.02M potassium phosphate, 0.15M sodium chloride, pH 7.2 *Storage buffer changes when conjugated
Purification	Protein G Purified
Immunogen	Recombinant Full Length Mouse Aha1 Protein
UniProt ID	Q8BK64
MW	38kDa
Tested applications	ELISA, ICC, IF, IHC, IP, WB
Dilution range	WB (1:1000), IHC (1:100), ICC/IF (1:1000), IP (1:1000); optimal dilutions for assays should be determined by the user.

Biorbyt Ltd.

7 Signet Court, Swann Road
Cambridge
CB5 8LA
United Kingdom

Email: info@biorbyt.com, support@biorbyt.com

Phone: [+44 \(0\)1223 859353](tel:+44(0)1223859353) | Fax: [+1 \(415\) 651-8558](tel:+1(415)651-8558)

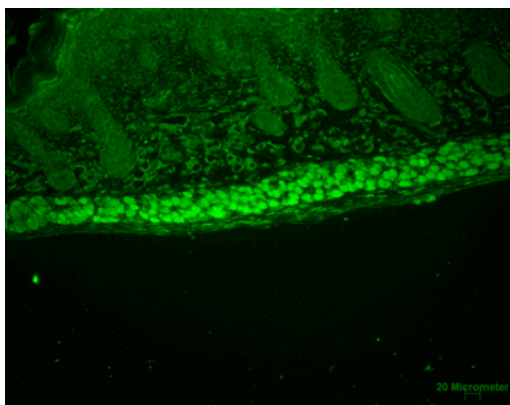
Biorbyt LLC

68 TW Alexander Drive
Research Triangle Park
Durham
NC 27713
United States

Email: info@biorbyt.com, support@biorbyt.com

Phone: [+1 \(415\) 906-5211](tel:+1(415)906-5211) | Fax: [+1 \(415\) 651-8558](tel:+1(415)651-8558)

Application notes	1 µg/ml was sufficient for detection of Aha1 in 10 µg of rat tissue lysate by colorimetric immunoblot analysis using Goat anti-rat IgG:HRP as the secondary antibody.
Specificity	Detects ~38kDa. Can run up to 45kDa on SDS Page.
Clone Number	25F2.D9
Storage	Maintain refrigerated at 2-8°C for up to 2 weeks. For long term storage store at -20°C in small aliquots to prevent freeze-thaw cycles.
Note	For research use only
Entrez	217737
NCBI	NP_666148.1
Expiration Date	12 months from date of receipt.



Immunohistochemistry analysis using Rat Anti-Aha1 Monoclonal Antibody, Clone 25F2.D9. Tissue: backskin. Species: Mouse. Fixation: Bouin's Fixative and paraffin-embedded. Primary Antibody: Rat Anti-Aha1 Monoclonal Antibody at 1:100 for 1 hour at RT. Secondary Antibody: FITC Goat Anti-Rat (green) at 1:50 for 1 hour at RT. Localization: Uppermost epidermis staining, and muscle.

Biorbyt Ltd.

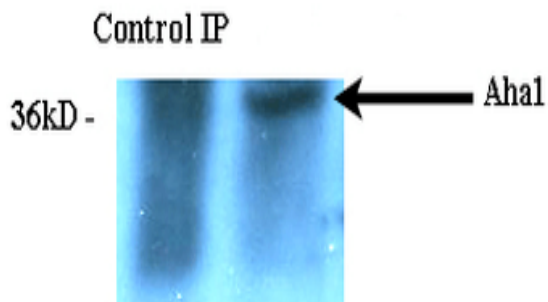
7 Signet Court, Swann Road
Cambridge
CB5 8LA
United Kingdom

Email: info@biorbyt.com, support@biorbyt.com
Phone: [+44 \(0\)1223 859353](tel:+44(0)1223859353) | Fax: [+1 \(415\) 651-8558](tel:+1(415)651-8558)

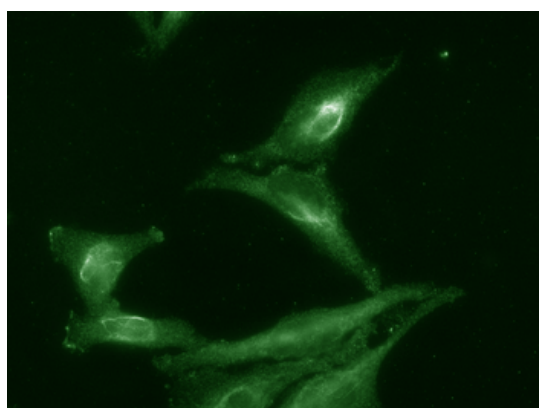
Biorbyt LLC

68 TW Alexander Drive
Research Triangle Park
Durham
NC 27713
United States

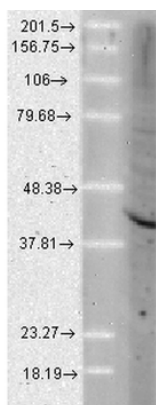
Email: info@biorbyt.com, support@biorbyt.com
Phone: [+1 \(415\) 906-5211](tel:+1(415)906-5211) | Fax: [+1 \(415\) 651-8558](tel:+1(415)651-8558)



Immunoprecipitation analysis using Rat Anti-Aha1 Monoclonal Antibody, Clone 25F2.D9. Tissue: HeLa cells. Species: Human. Primary Antibody: Rat Anti-Aha1 Monoclonal Antibody at 1:1000.



Immunocytochemistry/Immunofluorescence analysis using Rat Anti-Aha1 Monoclonal Antibody, Clone 25F2.D9. Tissue: Cervical cancer cell line (HeLa). Species: Human. Primary Antibody: Rat Anti-Aha1 Monoclonal Antibody at 1:1000. Secondary Antibody: FITC Goat Anti-Rat (green).



Western Blot analysis of Human Cell lysates showing detection of Aha1 protein using Rat Anti-Aha1 Monoclonal Antibody, Clone 25F2.D9. Load: 15 µg. Block: 1.5% BSA for 30 minutes at RT. Primary Antibody: Rat Anti-Aha1 Monoclonal Antibody at 1:1000 for 2 hours at RT. Secondary Antibody: Sheep Anti-Mouse IgG: HRP for 1 hour at RT.

Biorbyt Ltd.

7 Signet Court, Swann Road
Cambridge
CB5 8LA
United Kingdom

Email: info@biorbyt.com, support@biorbyt.com

Phone: +44 (0)1223 859353 | Fax: +1 (415) 651-8558

Biorbyt LLC

68 TW Alexander Drive
Research Triangle Park
Durham
NC 27713
United States

Email: info@biorbyt.com, support@biorbyt.com

Phone: +1 (415) 906-5211 | Fax: +1 (415) 651-8558