

Product Datasheet

ATAD2 Rabbit Polyclonal Antibody (FITC) (orb181789)

Catalog Number	orb181789
Category	Antibodies
Description	ATAD2 Rabbit Polyclonal Antibody (FITC)
Target	ATAD2 (FITC)
Clonality	Polyclonal
Species/Host	Rabbit
Isotype	IgG
Conjugation	FITC
Reactivity	Mouse, Porcine
Form/Appearance	Liquid: PBS, 2 mM Sodium Azide, 30% glycerol
Concentration	- 100 µg (in 200 µl): 0.5 mg/ml
Purity	Polyclonal antibodies are purified by peptide affinity chromatography
Tested applications	ICC, IF
Dilution range	IF/ICC: 1:100
Note	For research use only
Expiration Date	12 months from date of receipt.

Biorbyt Ltd.

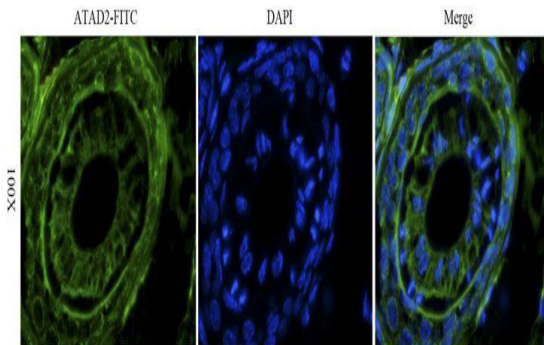
7 Signet Court, Swann Road
Cambridge
CB5 8LA
United Kingdom

Email: info@biorbyt.com, support@biorbyt.com
Phone: [+44 \(0\)1223 859353](tel:+44(0)1223859353) | Fax: [+1 \(415\) 651-8558](tel:+1(415)651-8558)

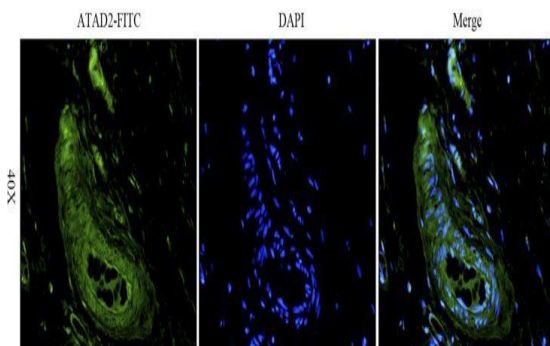
Biorbyt LLC

68 TW Alexander Drive
Research Triangle Park
Durham
NC 27713
United States

Email: info@biorbyt.com, support@biorbyt.com
Phone: [+1 \(415\) 906-5211](tel:+1(415)906-5211) | Fax: [+1 \(415\) 651-8558](tel:+1(415)651-8558)



IF analysis of mouse skin tissue using anti-ATAD2 (dilution of primary antibody at 1:100)



Immunofluorescence image of pig lung tissue using ATAD2 antibody (dilution at 1:100)

Biorbyt Ltd.

7 Signet Court, Swann Road
Cambridge
CB5 8LA
United Kingdom

Email: info@biorbyt.com, support@biorbyt.com

Phone: [+44 \(0\)1223 859353](tel:+44(0)1223859353) | Fax: [+1 \(415\) 651-8558](tel:+1(415)651-8558)

Biorbyt LLC

68 TW Alexander Drive
Research Triangle Park
Durham
NC 27713
United States

Email: info@biorbyt.com, support@biorbyt.com

Phone: [+1 \(415\) 906-5211](tel:+1(415)906-5211) | Fax: [+1 \(415\) 651-8558](tel:+1(415)651-8558)