

## Product Datasheet

# Mouse Tartrate Resistant Acid Phosphatase 5b (TRACP-5b) ELISA Kit (orb1807786)

|                          |  |
|--------------------------|--|
| <b>Catalog Number</b>    | orb1807786   |
| <b>Category</b>          | Assays and Kits  |
| <b>Description</b>       | Mouse Tartrate Resistant Acid Phosphatase 5b (TRACP-5b) ELISA Kit  |
| <b>Target</b>            | TRACP-5b   |
| <b>Reactivity</b>        | Mouse  |
| <b>UniProt ID</b>        | <b>Q05117</b>  |
| <b>Application notes</b> | <p>This ELISA kit uses the Sandwich-ELISA principle. The micro ELISA plate provided in this kit has been pre-coated with an antibody specific to Mouse TRACP-5b. Standards or samples are added to the micro ELISA plate wells and combined with the specific antibody. Then a biotinylated detection antibody specific for Mouse TRACP-5b and Avidin-Horseradish Peroxidase (HRP) conjugate are added successively to each micro plate well and incubated. Free components are washed away. The substrate solution is added to each well. Only those wells that contain Mouse TRACP-5b, biotinylated detection antibody and Avidin-HRP conjugate will appear blue in color. The enzyme-substrate reaction is terminated by the addition of stop solution and the color turns yellow. The optical density (OD) is measured spectrophotometrically at a wavelength of 450 nm <math>\pm</math> 2 nm. The OD value is proportional to the concentration of Mouse TRACP-5b. You can calculate the concentration of Mouse TRACP-5b in the samples by comparing the OD of the samples to the standard curve.</p> |
| <b>Assay Type</b>        | Sandwich   |
| <b>Assay Time</b>        | 3.5H   |
| <b>Standard</b>          | 50ng/mL  |

**Biorbyt Ltd.**

7 Signet Court, Swann Road  
Cambridge  
CB5 8LA  
United Kingdom

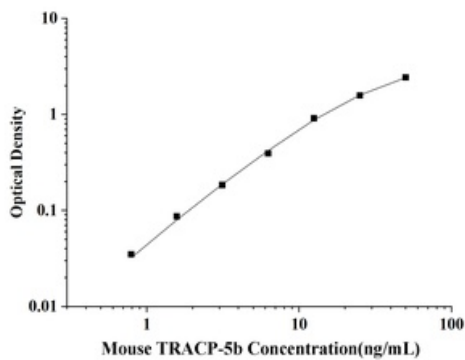
Email: [info@biorbyt.com](mailto:info@biorbyt.com), [support@biorbyt.com](mailto:support@biorbyt.com)  
Phone: [+44 \(0\)1223 859353](tel:+44(0)1223859353) | Fax: [+1 \(415\) 651-8558](tel:+1(415)651-8558)

**Biorbyt LLC**

68 TW Alexander Drive  
Research Triangle Park  
Durham  
NC 27713-2847  
United States

Email: [info@biorbyt.com](mailto:info@biorbyt.com), [support@biorbyt.com](mailto:support@biorbyt.com)  
Phone: [+1 \(415\) 906-5211](tel:+1(415)906-5211) | Fax: [+1 \(415\) 651-8558](tel:+1(415)651-8558)

|                        |   |
|------------------------|---|
| <b>Range</b>           | 0.78-50ng/mL  |
| <b>Sensitivity</b>     | 0.47 ng/mL  |
| <b>Sample Types</b>    | serum, plasma, Tissue homogenate and Other biological samples |
| <b>Note</b>            | For research use only   |
| <b>Expiration Date</b> | 6 months from date of receipt.                                |



Standard curve for orb1807786 ELISA kit.

**Biorbyt Ltd.**

7 Signet Court, Swann Road  
Cambridge  
CB5 8LA  
United Kingdom

Email: [info@biorbyt.com](mailto:info@biorbyt.com), [support@biorbyt.com](mailto:support@biorbyt.com)

Phone: [+44 \(0\)1223 859353](tel:+44(0)1223859353) | Fax: [+1 \(415\) 651-8558](tel:+1(415)651-8558)

**Biorbyt LLC**

68 TW Alexander Drive  
Research Triangle Park  
Durham  
NC 27713-2847  
United States

Email: [info@biorbyt.com](mailto:info@biorbyt.com), [support@biorbyt.com](mailto:support@biorbyt.com)

Phone: [+1 \(415\) 906-5211](tel:+1(415)906-5211) | Fax: [+1 \(415\) 651-8558](tel:+1(415)651-8558)