

Product Datasheet

Rabbit ARID1A/BAF250 Recombinant Monoclonal Antibody (orb1806460)

Catalog Number	orb1806460
Category	Antibodies
Description	Rabbit ARID1A/BAF250 Recombinant Monoclonal Antibody
Target	ARID1A/BAF250
Clonality	Recombinant
Species/Host	Rabbit
Isotype	IgG
Conjugation	Unconjugated
Reactivity	Human, Mouse
Form/Appearance	Liquid
Concentration	50 µg/ml
Buffer/Preservatives	Borate Buffered Saline (BBS) pH 8.2 with 0.1% rAlbumin and 0.09% Sodium Azide
Purification	Purified
Immunogen	Between 750 and 800
UniProt ID	O14497
Tested applications	FC, ICC, IHC, IP, WB

Biorbyt Ltd.

7 Signet Court, Swann Road
Cambridge
CB5 8LA
United Kingdom

Email: info@biorbyt.com, support@biorbyt.com

Phone: [+44 \(0\)1223 859353](tel:+44(0)1223859353) | Fax: [+1 \(415\) 651-8558](tel:+1(415)651-8558)

Biorbyt LLC

68 TW Alexander Drive
Research Triangle Park
Durham
NC 27713
United States

Email: info@biorbyt.com, support@biorbyt.com

Phone: [+1 \(415\) 906-5211](tel:+1(415)906-5211) | Fax: [+1 \(415\) 651-8558](tel:+1(415)651-8558)

Dilution range

Application : Flow-Cyt , ApplicationDilutionRange : Fixed in 4% formaldehyde and permeabilized with 90% methanol. 1 µl per 1 x 10⁶ cells. , Application : ICC , ApplicationDilutionRange : 1:100 to 1:500. Epitope retrieval with citrate buffer pH 6.0 is recommended for FFPE cell sections. , Application : IHC , ApplicationDilutionRange : 1:100 to 1:500. Epitope retrieval with citrate buffer pH 6.0 is recommended for FFPE tissue sections. , Application : IP , ApplicationDilutionRange : 20 µl/mg lysate , Application : WB , ApplicationDilutionRange : 1:1000 (3-8% Tris-acetate gel recommended)

Application notes

Format: Whole IgG

Antibody Type

Primary Antibody

Clone Number

BLR279L

Storage

Maintain refrigerated at 2-8°C for up to 2 weeks. For long term storage store at -20°C in small aliquots to prevent freeze-thaw cycles.

Note

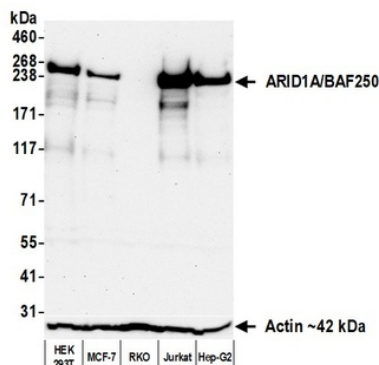
For research use only

NCBI

NP_006006.3

Expiration Date

12 months from date of receipt.



Detection of human ARID1A/BAF250 by western blot. Samples: Whole cell lysate (50 µg) from HEK293T, MCF-7, RKO, Jurkat, and Hep-G2 cells prepared using NETN lysis buffer. Antibody: Rabbit anti-ARID1A/BAF250 recombinant monoclonal antibody (orb1806460) used at 1:1000. Secondary: HRP-conjugated goat anti-rabbit IgG. Detection: Chemiluminescence with an exposure time of 75 seconds. Lower Panel: Rabbit anti-Actin recombinant monoclonal antibody.

Biorbyt Ltd.

7 Signet Court, Swann Road
Cambridge
CB5 8LA
United Kingdom

Email: info@biorbyt.com, support@biorbyt.com

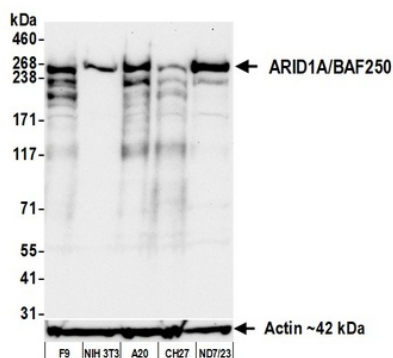
Phone: +44 (0)1223 859353 | Fax: +1 (415) 651-8558

Biorbyt LLC

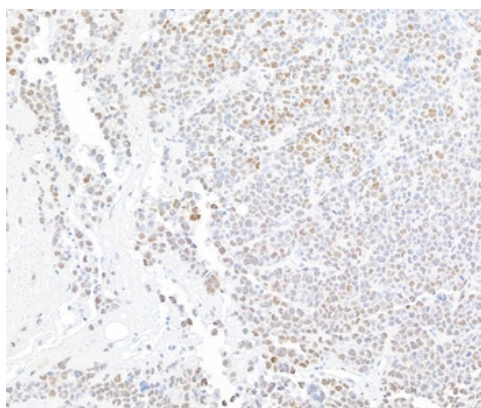
68 TW Alexander Drive
Research Triangle Park
Durham
NC 27713
United States

Email: info@biorbyt.com, support@biorbyt.com

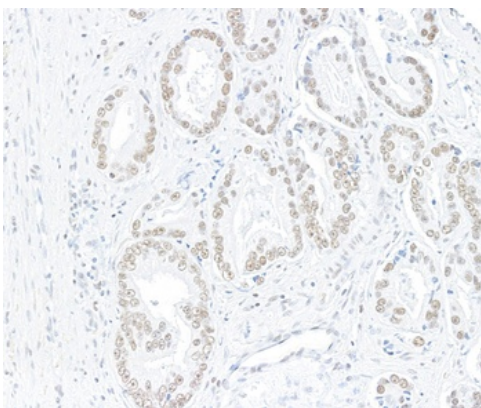
Phone: +1 (415) 906-5211 | Fax: +1 (415) 651-8558



Detection of mouse ARID1A/BAF250 by western blot. Samples: Whole cell lysate (50 µg) from F9, NIH 3T3, A20, CH27, and ND7/23 cells prepared using NETN lysis buffer. Antibody: Rabbit anti-ARID1A/BAF250 recombinant monoclonal antibody (orb1806460) used at 1:1000. Secondary: HRP-conjugated goat anti-rabbit IgG. Detection: Chemiluminescence with an exposure time of 30 seconds. Lower Panel: Rabbit anti-Actin recombinant monoclonal antibody.



Detection of mouse ARID1A/BAF250 by immunohistochemistry. Sample: FFPE section of mouse plasmacytoma. Antibody: Rabbit anti-ARID1A recombinant monoclonal antibody (orb1806460). Secondary: HRP-conjugated goat anti-rabbit IgG.



Detection of human ARID1A/BAF250 by immunohistochemistry. Sample: FFPE section of prostate carcinoma. Antibody: Rabbit anti-ARID1A recombinant monoclonal antibody (orb1806460). Secondary: HRP-conjugated goat anti-rabbit IgG.

Biorbyt Ltd.

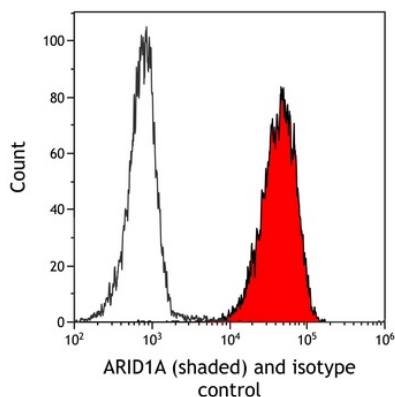
7 Signet Court, Swann Road
Cambridge
CB5 8LA
United Kingdom

Email: info@biorbyt.com, support@biorbyt.com
Phone: +44 (0)1223 859353 | Fax: +1 (415) 651-8558

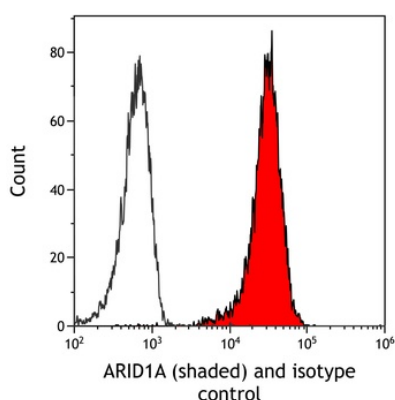
Biorbyt LLC

68 TW Alexander Drive
Research Triangle Park
Durham
NC 27713
United States

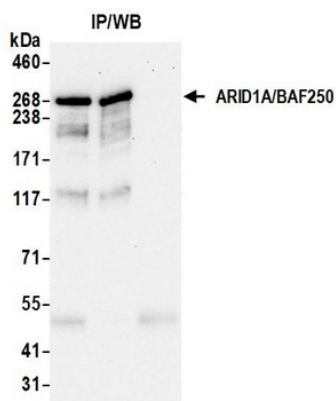
Email: info@biorbyt.com, support@biorbyt.com
Phone: +1 (415) 906-5211 | Fax: +1 (415) 651-8558



Detection of mouse ARID1A/BAF250 (shaded) in EL4 cells by flow cytometry. Antibody: Rabbit anti- ARID1A recombinant monoclonal antibody (orb1806460) or isotype control (unshaded). Secondary: DyLight® 650-conjugated goat anti-rabbit IgG.



Detection of human ARID1A/BAF250 (shaded) in HT-29 cells by flow cytometry. Antibody: Rabbit anti-ARID1A recombinant monoclonal antibody (orb1806460) or isotype control (unshaded). Secondary: DyLight® 650-conjugated goat anti-rabbit IgG.



Detection of human ARID1A/BAF250 by western blot of immunoprecipitates. Samples: Whole cell lysate (1 mg per IP; 10% of IP loaded) from 293T cells prepared using NETN lysis buffer. Antibodies: Rabbit anti-ARID1A/BAF250 recombinant monoclonal antibody (orb1806460) used for IP at 20 µl/mg lysate.

Biorbyt Ltd.

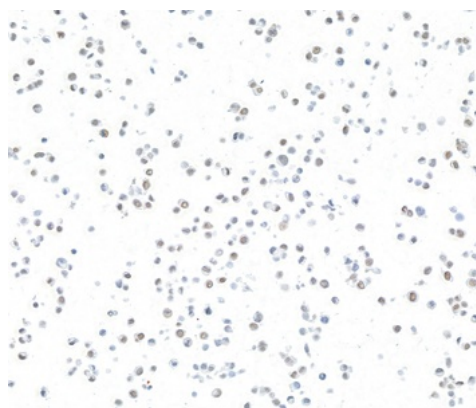
7 Signet Court, Swann Road
Cambridge
CB5 8LA
United Kingdom

Email: info@biorbyt.com, support@biorbyt.com
Phone: +44 (0)1223 859353 | Fax: +1 (415) 651-8558

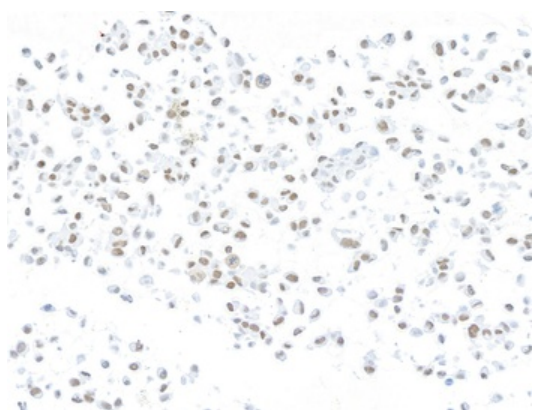
Biorbyt LLC

68 TW Alexander Drive
Research Triangle Park
Durham
NC 27713
United States

Email: info@biorbyt.com, support@biorbyt.com
Phone: +1 (415) 906-5211 | Fax: +1 (415) 651-8558



Detection of mouse ARID1A/BAF250 by immunocytochemistry.
Sample: FFPE section of mouse mIMCD-3 cells. Antibody: Rabbit anti-ARID1A recombinant monoclonal antibody (orb1806460).
Secondary: HRP-conjugated goat anti-rabbit IgG.



Detection of human ARID1A/BAF250 by immunocytochemistry.
Sample: FFPE section of OVCAR-8 cells. Antibody: Rabbit anti-ARID1A recombinant monoclonal antibody (orb1806460).
Secondary: HRP-conjugated goat anti-rabbit IgG.

Biorbyt Ltd.

7 Signet Court, Swann Road
Cambridge
CB5 8LA
United Kingdom

Email: info@biorbyt.com, support@biorbyt.com

Phone: [+44 \(0\)1223 859353](tel:+44(0)1223859353) | Fax: [+1 \(415\) 651-8558](tel:+1(415)651-8558)

Biorbyt LLC

68 TW Alexander Drive
Research Triangle Park
Durham
NC 27713
United States

Email: info@biorbyt.com, support@biorbyt.com

Phone: [+1 \(415\) 906-5211](tel:+1(415)906-5211) | Fax: [+1 \(415\) 651-8558](tel:+1(415)651-8558)