

Product Datasheet

Rabbit ARID1B Recombinant Monoclonal Antibody (orb1806439)

Catalog Number	orb1806439
Category	Antibodies
Description	Rabbit ARID1B Recombinant Monoclonal Antibody
Target	ARID1B
Clonality	Recombinant
Species/Host	Rabbit
Isotype	IgG
Conjugation	Unconjugated
Reactivity	Human, Mouse
Form/Appearance	Liquid
Concentration	1000 µg/ml
Buffer/Preservatives	Borate Buffered Saline (BBS) pH 8.2 with 0.09% Sodium Azide, rAlbumin-Free
Purification	Purified
Immunogen	Between 1425 and 1475
UniProt ID	Q8NFD5
Tested applications	ICC, IHC, IP, WB

Biorbyt Ltd.

7 Signet Court, Swann Road
Cambridge
CB5 8LA
United Kingdom

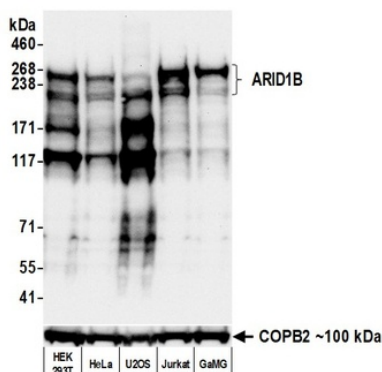
Email: info@biorbyt.com, support@biorbyt.com
Phone: [+44 \(0\)1223 859353](tel:+44(0)1223859353) | Fax: [+1 \(415\) 651-8558](tel:+1(415)651-8558)

Biorbyt LLC

68 TW Alexander Drive
Research Triangle Park
Durham
NC 27713
United States

Email: info@biorbyt.com, support@biorbyt.com
Phone: [+1 \(415\) 906-5211](tel:+1(415)906-5211) | Fax: [+1 \(415\) 651-8558](tel:+1(415)651-8558)

Dilution range	Application : Flow-Cyt , ApplicationDilutionRange : Fixed in 4% formaldehyde and permeabilized with 90% methanol. 1 µl per 1 x 10 ⁶ cells. , Application : ICC , ApplicationDilutionRange : 1:100 to 1:500. Epitope retrieval with citrate buffer pH 6.0 is recommended for FFPE cell sections. , Application : IHC , ApplicationDilutionRange : 1:100 to 1:500. Epitope retrieval with citrate buffer pH 6.0 is recommended for FFPE tissue sections. , Application : IP , ApplicationDilutionRange : 6 µl/mg lysate , Application : WB , ApplicationDilutionRange : 1:1000 (3-8% Tris-acetate gel recommended)
Application notes	Format: Whole IgG
Antibody Type	Primary Antibody
Clone Number	BLR291L
Storage	Maintain refrigerated at 2-8°C for up to 2 weeks. For long term storage store at -20°C in small aliquots to prevent freeze-thaw cycles.
Note	For research use only
NCBI	NP_059989.3
Expiration Date	12 months from date of receipt.



Detection of human ARID1B by western blot. Samples: Whole cell lysate (50 µg) from HEK293T, HeLa, U2OS, Jurkat, and GaMG cells prepared using NETN lysis buffer. Antibody: Rabbit anti-ARID1B recombinant monoclonal antibody (orb1806439) used at 1:1000. Secondary: HRP-conjugated goat anti-rabbit IgG. Detection: Chemiluminescence with an exposure time of 30 seconds. Lower Panel: Rabbit anti-COPB2 antibody.

Biorbyt Ltd.

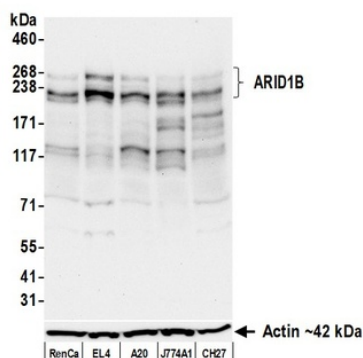
7 Signet Court, Swann Road
Cambridge
CB5 8LA
United Kingdom

Email: info@biorbyt.com, support@biorbyt.com
Phone: +44 (0)1223 859353 | Fax: +1 (415) 651-8558

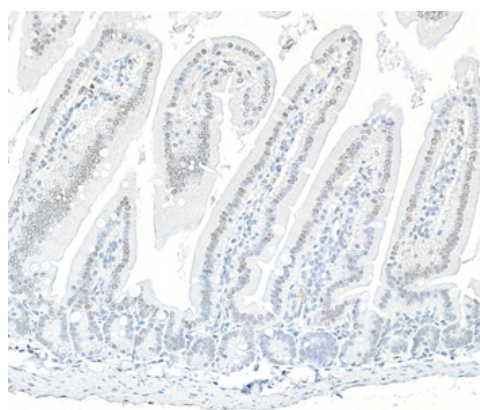
Biorbyt LLC

68 TW Alexander Drive
Research Triangle Park
Durham
NC 27713
United States

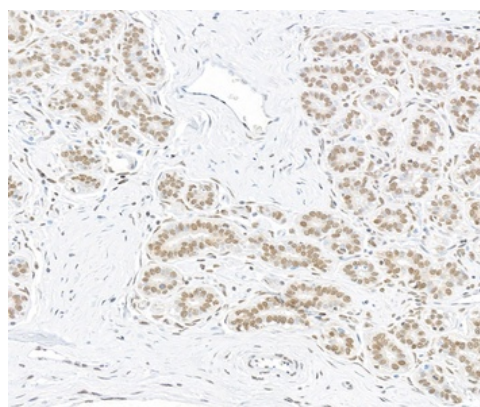
Email: info@biorbyt.com, support@biorbyt.com
Phone: +1 (415) 906-5211 | Fax: +1 (415) 651-8558



Detection of mouse ARID1B by western blot. Samples: Whole cell lysate (25 µg) from RenCa, EL4, A20, J774A1, and CH27 cells prepared using NETN lysis buffer. Antibody: Rabbit anti-ARID1B recombinant monoclonal antibody (orb1806439) used at 1:1000. Secondary: HRP-conjugated goat anti-rabbit IgG. Detection: Chemiluminescence with an exposure time of 30 seconds. Lower Panel: Rabbit anti-Actin recombinant monoclonal antibody.



Detection of mouse ARID1B/BAF250 by immunohistochemistry. Sample: FFPE section of mouse gut. Antibody: Rabbit anti-ARID1B recombinant monoclonal antibody (orb1806439). Secondary: HRP-conjugated goat anti-rabbit IgG.



Detection of human ARID1B by immunohistochemistry. Sample: FFPE section of breast carcinoma. Antibody: Rabbit anti-ARID1B recombinant monoclonal antibody (orb1806439). Secondary: HRP-conjugated goat anti-rabbit IgG.

Biorbyt Ltd.

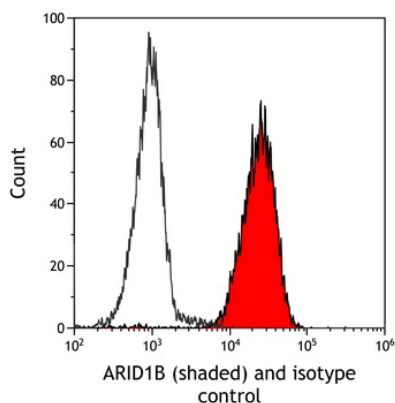
7 Signet Court, Swann Road
Cambridge
CB5 8LA
United Kingdom

Email: info@biorbyt.com, support@biorbyt.com
Phone: +44 (0)1223 859353 | Fax: +1 (415) 651-8558

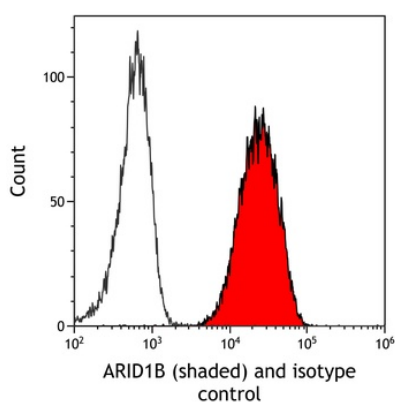
Biorbyt LLC

68 TW Alexander Drive
Research Triangle Park
Durham
NC 27713
United States

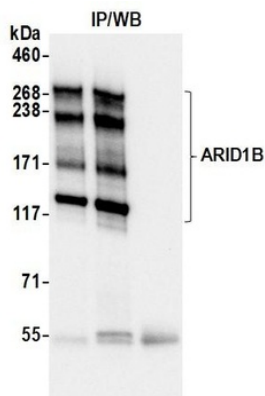
Email: info@biorbyt.com, support@biorbyt.com
Phone: +1 (415) 906-5211 | Fax: +1 (415) 651-8558



Detection of mouse ARID1B (shaded) in EL4 cells by flow cytometry. Antibody: Rabbit anti-ARID1B recombinant monoclonal antibody (orb1806439) or isotype control (unshaded). Secondary: DyLight® 650-conjugated goat anti-rabbit IgG.



Detection of human ARID1B (shaded) in Jurkat cells by flow cytometry. Antibody: Rabbit anti-ARID1B recombinant monoclonal antibody (orb1806439) or isotype control (unshaded). Secondary: DyLight® 650-conjugated goat anti-rabbit IgG.



Detection of human ARID1B by western blot of immunoprecipitates. Samples: Whole cell lysate (1.0 mg per IP reaction; 20% of IP loaded) from 293T cells prepared using NETN lysis buffer. Antibodies: Rabbit anti-ARID1B recombinant monoclonal antibody (orb1806439) used for IP at 6 µl/mg lysate.

Biorbyt Ltd.

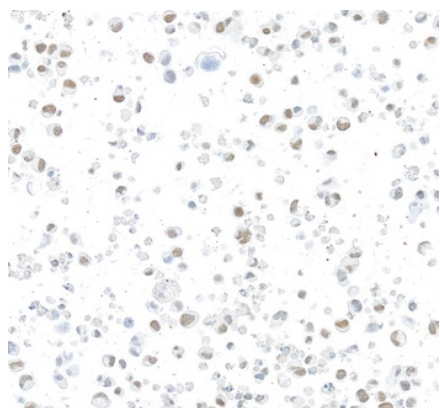
7 Signet Court, Swann Road
Cambridge
CB5 8LA
United Kingdom

Email: info@biorbyt.com, support@biorbyt.com
Phone: +44 (0)1223 859353 | Fax: +1 (415) 651-8558

Biorbyt LLC

68 TW Alexander Drive
Research Triangle Park
Durham
NC 27713
United States

Email: info@biorbyt.com, support@biorbyt.com
Phone: +1 (415) 906-5211 | Fax: +1 (415) 651-8558



Detection of mouse ARID1B by immunocytochemistry. Sample: FFPE section of ND7/23 cells. Antibody: Rabbit anti-ARID1B recombinant monoclonal antibody (orb1806439). Secondary: HRP-conjugated goat anti-rabbit IgG.



Detection of human ARID1B by immunocytochemistry. Sample: FFPE section of RKO cells. Antibody: Rabbit anti-ARID1B recombinant monoclonal antibody (orb1806439). Secondary: HRP-conjugated goat anti-rabbit IgG.

Biorbyt Ltd.

7 Signet Court, Swann Road
Cambridge
CB5 8LA
United Kingdom

Email: info@biorbyt.com, support@biorbyt.com

Phone: [+44 \(0\)1223 859353](tel:+44(0)1223859353) | Fax: [+1 \(415\) 651-8558](tel:+1(415)651-8558)

Biorbyt LLC

68 TW Alexander Drive
Research Triangle Park
Durham
NC 27713
United States

Email: info@biorbyt.com, support@biorbyt.com

Phone: [+1 \(415\) 906-5211](tel:+1(415)906-5211) | Fax: [+1 \(415\) 651-8558](tel:+1(415)651-8558)