

## Product Datasheet

# Mouse Cytokeratin 14 Recombinant Monoclonal Antibody (orb1806434)

<b>Catalog Number</b>	orb1806434
<b>Category</b>	Antibodies
<b>Description</b>	Mouse Cytokeratin 14 Recombinant Monoclonal Antibody
<b>Target</b>	Cytokeratin 14
<b>Clonality</b>	Recombinant
<b>Species/Host</b>	Mouse
<b>Isotype</b>	IgG2a
<b>Conjugation</b>	Unconjugated
<b>Reactivity</b>	Human
<b>Form/Appearance</b>	Liquid
<b>Concentration</b>	100 µg/ml
<b>Buffer/Preservatives</b>	Borate Buffered Saline (BBS) pH 8.2 with 0.1% rAlbumin and 0.09% Sodium Azide
<b>Purification</b>	Purified
<b>Immunogen</b>	Human Cytokeratin 14 (C terminal)
<b>UniProt ID</b>	<b>P02533</b>
<b>Tested applications</b>	FC, ICC, IHC, IP, WB

**Biorbyt Ltd.**

7 Signet Court, Swann Road  
Cambridge  
CB5 8LA  
United Kingdom

Email: [info@biorbyt.com](mailto:info@biorbyt.com), [support@biorbyt.com](mailto:support@biorbyt.com)

Phone: [+44 \(0\)1223 859353](tel:+44(0)1223859353) | Fax: [+1 \(415\) 651-8558](tel:+1(415)651-8558)

**Biorbyt LLC**

68 TW Alexander Drive  
Research Triangle Park  
Durham  
NC 27713-2847  
United States

Email: [info@biorbyt.com](mailto:info@biorbyt.com), [support@biorbyt.com](mailto:support@biorbyt.com)

Phone: [+1 \(415\) 906-5211](tel:+1(415)906-5211) | Fax: [+1 \(415\) 651-8558](tel:+1(415)651-8558)

**Dilution range**

Application : Flow-Cyt , ApplicationDilutionRange : Fixed in 4% formaldehyde and permeabilized with 90% methanol. 1 µl per 1 x 10<sup>6</sup> cells. , Application : ICC , ApplicationDilutionRange : 1:100 to 1:500. Epitope retrieval with citrate buffer pH 6.0 is recommended for FFPE cell sections. , Application : IHC , ApplicationDilutionRange : 1:100 to 1:500. Epitope retrieval with citrate buffer pH 6.0 is recommended for FFPE tissue sections. , Application : IP , ApplicationDilutionRange : 20 µl/mg lysate , Application : WB , ApplicationDilutionRange : 1:1000

**Application notes**

Format: Whole IgG

**Antibody Type**

Primary Antibody

**Clone Number**

LL002

**Storage**

Maintain refrigerated at 2-8°C for up to 2 weeks. For long term storage store at -20°C in small aliquots to prevent freeze-thaw cycles.

**Note**

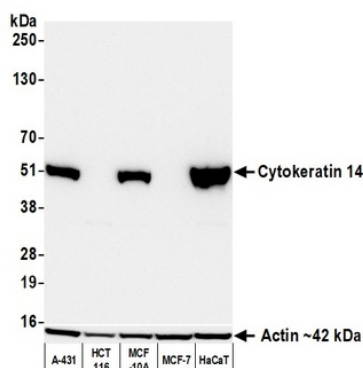
For research use only

**NCBI**

[NP\\_000517.3](#)

**Expiration Date**

12 months from date of receipt.



Detection of human Cytokeratin 14 by western blot. Samples: Whole cell lysate (25 µg) from A-431, HCT 116, MCF-10A, MCF-7, and HaCaT cells prepared using NETN lysis buffer. Antibody: Rabbit anti-Cytokeratin 14 recombinant monoclonal antibody [LL002] (orb1806434) used at 1:1000. Secondary: HRP-conjugated goat anti-rabbit IgG. Detection: Chemiluminescence with an exposure time of 3 seconds. Lower Panel: Rabbit anti-Actin recombinant monoclonal antibody.

**Biorbyt Ltd.**

7 Signet Court, Swann Road  
Cambridge  
CB5 8LA  
United Kingdom

Email: [info@biorbyt.com](mailto:info@biorbyt.com), [support@biorbyt.com](mailto:support@biorbyt.com)

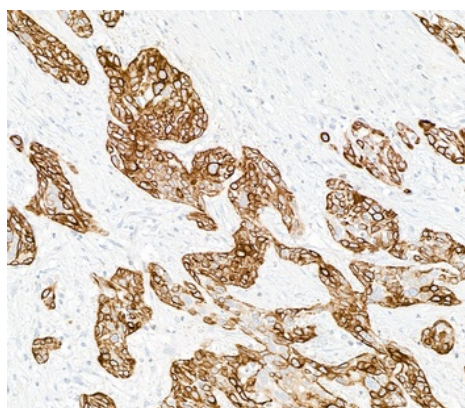
Phone: +44 (0)1223 859353 | Fax: +1 (415) 651-8558

**Biorbyt LLC**

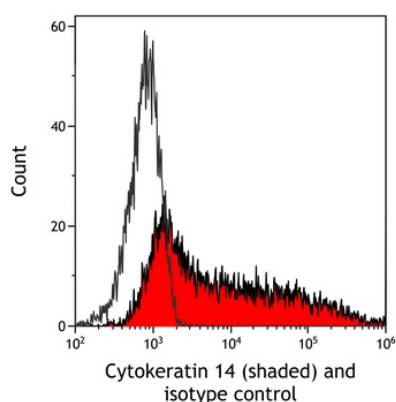
68 TW Alexander Drive  
Research Triangle Park  
Durham  
NC 27713-2847  
United States

Email: [info@biorbyt.com](mailto:info@biorbyt.com), [support@biorbyt.com](mailto:support@biorbyt.com)

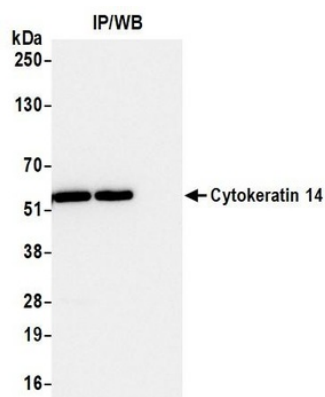
Phone: +1 (415) 906-5211 | Fax: +1 (415) 651-8558



Detection of human Cytokeratin 14 by immunohistochemistry. Sample: FFPE section of bladder carcinoma. Antibody: Mouse anti-Cytokeratin 14 recombinant monoclonal antibody [LL002] (orb1806434). Secondary: HRP-conjugated goat anti-mouse IgG.



Detection of human Cytokeratin 14 (shaded) in FaDu cells by flow cytometry. Antibody: Mouse anti-Cytokeratin 14 recombinant monoclonal antibody [LL002] (orb1806434) or isotype control (unshaded). Secondary: DyLight® 650-conjugated goat anti-mouse IgG.



Detection of human Cytokeratin 14 by western blot of immunoprecipitates. Samples: Whole cell lysate (1 mg per IP; 10% of IP loaded) from MCF-10A cells prepared using NETN lysis buffer. Antibodies: Rabbit anti-Cytokeratin 14 recombinant monoclonal antibody [LL002] (orb1806434) used for IP at 20 µl/mg lysate.

**Biorbyt Ltd.**

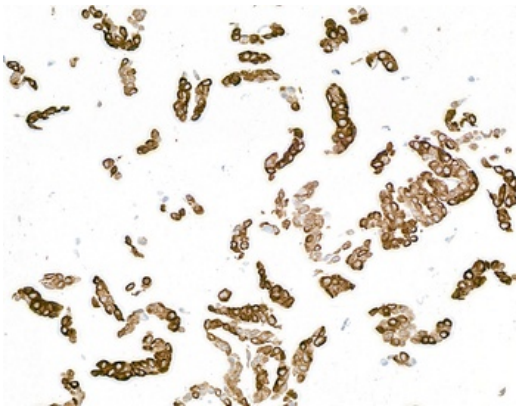
7 Signet Court, Swann Road  
Cambridge  
CB5 8LA  
United Kingdom

Email: [info@biorbyt.com](mailto:info@biorbyt.com), [support@biorbyt.com](mailto:support@biorbyt.com)  
Phone: +44 (0)1223 859353 | Fax: +1 (415) 651-8558

**Biorbyt LLC**

68 TW Alexander Drive  
Research Triangle Park  
Durham  
NC 27713-2847  
United States

Email: [info@biorbyt.com](mailto:info@biorbyt.com), [support@biorbyt.com](mailto:support@biorbyt.com)  
Phone: +1 (415) 906-5211 | Fax: +1 (415) 651-8558



Detection of human Cytokeratin 14 by immunocytochemistry. Sample: FFPE section of CAL-27 cells. Antibody: Mouse anti-Cytokeratin 14 recombinant monoclonal antibody [LL002] (orb1806434). Secondary:HRP-conjugated goat anti-mouse IgG.

**Biorbyt Ltd.**

7 Signet Court, Swann Road  
Cambridge  
CB5 8LA  
United Kingdom

Email: [info@biorbyt.com](mailto:info@biorbyt.com), [support@biorbyt.com](mailto:support@biorbyt.com)

Phone: [+44 \(0\)1223 859353](tel:+44(0)1223859353) | Fax: [+1 \(415\) 651-8558](tel:+1(415)651-8558)

**Biorbyt LLC**

68 TW Alexander Drive  
Research Triangle Park  
Durham  
NC 27713-2847  
United States

Email: [info@biorbyt.com](mailto:info@biorbyt.com), [support@biorbyt.com](mailto:support@biorbyt.com)

Phone: [+1 \(415\) 906-5211](tel:+1(415)906-5211) | Fax: [+1 \(415\) 651-8558](tel:+1(415)651-8558)