

Product Datasheet

TREM1/CD354 Antibody (orb1805967)

Catalog Number	orb1805967
Category	Antibodies
Description	Anti-TREM1 / CD354 Reference Antibody is expressed from CHO. The heavy chain type is hulgG1, and the light chain type is hukappa. It has a predicted MW of 145.5 kDa.
Target	TREM1 / CD354
Clonality	Monoclonal
Conjugation	Unconjugated
Reactivity	Human
Concentration	Batch dependent
Buffer/Preservatives	100 mM Proline/Acetic acid 20mM Arginine pH 5.0
Purity	>95%
Purification	Protein A
UniProt ID	Q9NP99
MW	143.66 kDa
Tested applications	ELISA, FA, FACS, In vivo
Expression System	CHO
Endotoxins	0.001 EU/ug

Biorbyt Ltd.

7 Signet Court, Swann Road
Cambridge
CB5 8LA
United Kingdom

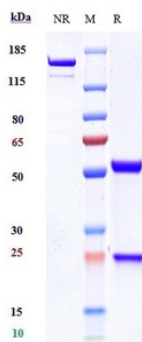
Email: info@biorbyt.com, support@biorbyt.com
Phone: [+44 \(0\)1223 859353](tel:+44(0)1223859353) | Fax: [+1 \(415\) 651-8558](tel:+1(415)651-8558)

Biorbyt LLC

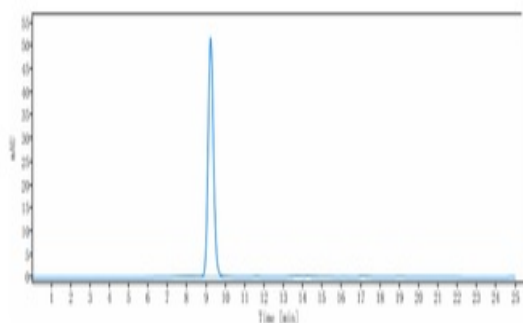
68 TW Alexander Drive
Research Triangle Park
Durham
NC 27713-2847
United States

Email: info@biorbyt.com, support@biorbyt.com
Phone: [+1 \(415\) 906-5211](tel:+1(415)906-5211) | Fax: [+1 \(415\) 651-8558](tel:+1(415)651-8558)

Storage	Maintain refrigerated at 2-8°C for up to 2 weeks. For long term storage store at -20°C in small aliquots to prevent freeze-thaw cycles.
Note	For research use only
Expiration Date	12 months from date of receipt.



Anti-TREM1 / CD354 Reference Antibody (PY159) on SDS-PAGE under reducing (R) condition. The gel was stained with Coomassie Blue. The purity of the protein is greater than 95%.



The purity of Anti-TREM1 / CD354 Reference Antibody (PY159) is more than 95% ;determined by SEC-HPLC.

Biorbyt Ltd.

7 Signet Court, Swann Road
Cambridge
CB5 8LA
United Kingdom

Email: info@biorbyt.com, support@biorbyt.com

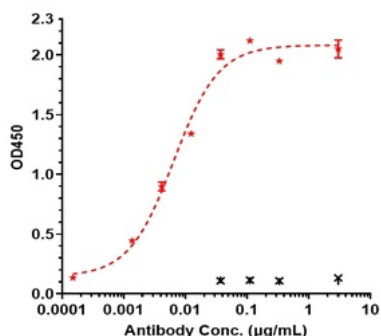
Phone: [+44 \(0\)1223 859353](tel:+44(0)1223859353) | Fax: [+1 \(415\) 651-8558](tel:+1(415)651-8558)

Biorbyt LLC

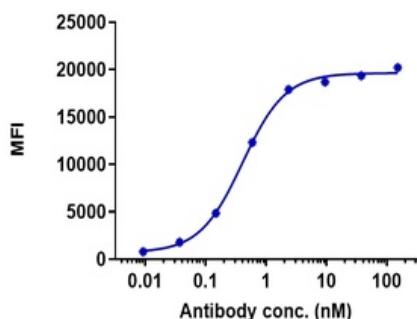
68 TW Alexander Drive
Research Triangle Park
Durham
NC 27713-2847
United States

Email: info@biorbyt.com, support@biorbyt.com

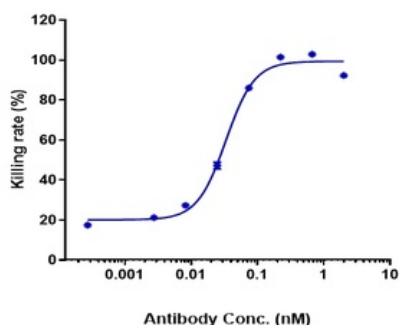
Phone: [+1 \(415\) 906-5211](tel:+1(415)906-5211) | Fax: [+1 \(415\) 651-8558](tel:+1(415)651-8558)



Immobilized human TREM1 His at 2 µg/mL can bind Anti-TREM1 / CD354 Reference Antibody (PY159); EC50=0.00645µg/mL.



Human TREM1 HEK293 cells were stained with Anti-TREM1 / CD354 Reference Antibody (PY159) and negative control protein respectively; washed and then followed by PE and analyzed with FACS; EC275=0.7744nM.



The endocytosis ratio PY159 by hu-TREM1-HEK293 increased with the increase of antibody concentration; and the Internalization Rate (%) reached 80% at antibody concentration of 0.3 nM.

Biorbyt Ltd.

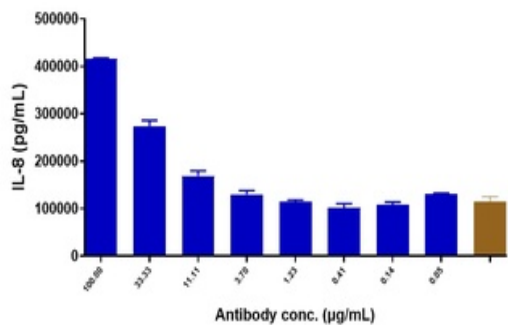
7 Signet Court, Swann Road
Cambridge
CB5 8LA
United Kingdom

Email: info@biorbyt.com, support@biorbyt.com
Phone: +44 (0)1223 859353 | Fax: +1 (415) 651-8558

Biorbyt LLC

68 TW Alexander Drive
Research Triangle Park
Durham
NC 27713-2847
United States

Email: info@biorbyt.com, support@biorbyt.com
Phone: +1 (415) 906-5211 | Fax: +1 (415) 651-8558



Anti-TREM1 Reference Antibody (PY159) Activation was evaluated using PBMC. The max induction fold was approximately 3.16.

Biorbyt Ltd.

7 Signet Court, Swann Road
Cambridge
CB5 8LA
United Kingdom

Email: info@biorbyt.com, support@biorbyt.com

Phone: [+44 \(0\)1223 859353](tel:+44(0)1223859353) | Fax: [+1 \(415\) 651-8558](tel:+1(415)651-8558)

Biorbyt LLC

68 TW Alexander Drive
Research Triangle Park
Durham
NC 27713-2847
United States

Email: info@biorbyt.com, support@biorbyt.com

Phone: [+1 \(415\) 906-5211](tel:+1(415)906-5211) | Fax: [+1 \(415\) 651-8558](tel:+1(415)651-8558)