

Product Datasheet

beta-Actin ACTB Rabbit Polyclonal Antibody (HRP) (orb1804654)

Catalog Number	orb1804654
Category	Antibodies
Description	Anti-beta-Actin ACTB Antibody (HRP). Tested in WB applications. This antibody reacts with Human, Mouse, Rat, Monkey, Chicken, Zebrafish.
Target	Actin, cytoplasmic 1
Clonality	Polyclonal
Species/Host	Rabbit
Isotype	IgG
Conjugation	HRP
Reactivity	Gallus, Human, Monkey, Mouse, Rat, Zebrafish
Form/Appearance	Liquid
Concentration	0.5 mg/mL
Buffer/Preservatives	Each vial contains 50% glycerol, 0.9% NaCl, 0.2% Na ₂ HPO ₄ .
Purification	HRP-Beta-Actin antibody is affinity chromatography purified via peptide column.
Immunogen	HRP-Beta-Actin antibody was raised against a synthetic peptide containing 16 amino acids near the amino terminus of beta-actin.
UniProt ID	P60709
MW	42 kDa

Biorbyt Ltd.

7 Signet Court, Swann Road
Cambridge
CB5 8LA
United Kingdom

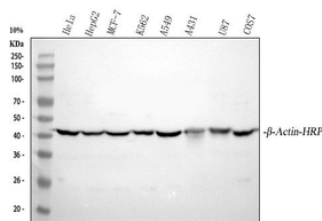
Email: info@biorbyt.com, support@biorbyt.com
Phone: [+44 \(0\)1223 859353](tel:+44(0)1223859353) | Fax: [+1 \(415\) 651-8558](tel:+1(415)651-8558)

Biorbyt LLC

68 TW Alexander Drive
Research Triangle Park
Durham
NC 27713
United States

Email: info@biorbyt.com, support@biorbyt.com
Phone: [+1 \(415\) 906-5211](tel:+1(415)906-5211) | Fax: [+1 \(415\) 651-8558](tel:+1(415)651-8558)

Tested applications	WB
Dilution range	Western blot, 0.02-0.1 µg/ml
Cross Reactivity	HRP-Beta-Actin antibody is human, mouse, rat, rabbit, chicken, and drosophila reactive.
Antibody Type	Primary Antibody
Storage	HRP-Beta-Actin antibody can be stored at 4°C for three months and -20°C, stable for up to one year.
Note	For research use only
Expiration Date	12 months from date of receipt.



Western blot analysis of beta-Actin using anti-beta-Actin antibody. Electrophoresis was performed on a 5-20% SDS-PAGE gel at 70V (Stacking gel) / 90V (Resolving gel) for 2-3 hours. The sample well of each lane was loaded with 30 µg of sample under reducing conditions. Lane 1: human HeLa whole cell lysates, Lane 2: human HepG2 whole cell lysates, Lane 3: human MCF-7 whole cell lysates, Lane 4: human K562 whole cell lysates, Lane 5: human A549 whole cell lysates, Lane 6: human A431 whole cell lysates, Lane 7: human U87 whole cell lysates, Lane 8: monkey COS-7 whole cell lysates. After electrophoresis, proteins were transferred to a nitrocellulose membrane at 150 mA for 50-90 minutes. Blocked the membrane with 5% non-fat milk/TBS for 1.5 hour at RT. The membrane was incubated with rabbit anti-beta-Actin antigen affinity purified polyclonal antibody at 0.1 µg/mL overnight at 4°C, then washed with TBS-0.1% Tween 3 times with 5 minutes each. The signal is developed using an Enhanced Chemiluminescent detection (ECL) kit with Tanon 5200 system. A specific band was detected for beta-Actin at approximately 42 kDa. The expected band size for beta-Actin is at 42 kDa.

Biorbyt Ltd.

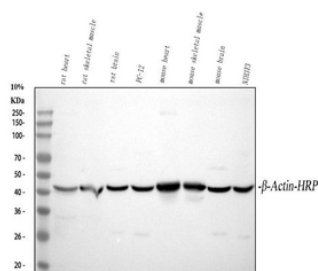
7 Signet Court, Swann Road
Cambridge
CB5 8LA
United Kingdom

Email: info@biorbyt.com, support@biorbyt.com
Phone: +44 (0)1223 859353 | Fax: +1 (415) 651-8558

Biorbyt LLC

68 TW Alexander Drive
Research Triangle Park
Durham
NC 27713
United States

Email: info@biorbyt.com, support@biorbyt.com
Phone: +1 (415) 906-5211 | Fax: +1 (415) 651-8558



Western blot analysis of beta-Actin using anti-beta-Actin antibody. Electrophoresis was performed on a 5-20% SDS-PAGE gel at 70V (Stacking gel) / 90V (Resolving gel) for 2-3 hours. The sample well of each lane was loaded with 30 ug of sample under reducing conditions. Lane 1: rat heart tissue lysates, Lane 2: rat skeletal muscle tissue lysates, Lane 3: rat brain tissue lysates, Lane 4: rat PC-12 whole cell lysates, Lane 5: mouse heart tissue lysates, Lane 6: mouse skeletal tissue lysates, Lane 7: mouse brain tissue lysates, Lane 8: mouse NIH/3T3 whole cell lysates. After electrophoresis, proteins were transferred to a nitrocellulose membrane at 150 mA for 50-90 minutes. Blocked the membrane with 5% non-fat milk/TBS for 1.5 hour at RT. The membrane was incubated with rabbit anti-beta-Actin antigen affinity purified polyclonal antibody at 0.1 μ g/mL overnight at 4°C, then washed with TBS-0.1% Tween 3 times with 5 minutes each. The signal is developed using an Enhanced Chemiluminescent detection (ECL) kit with Tanon 5200 system. A specific band was detected for beta-Actin at approximately 42 kDa. The expected band size for beta-Actin is at 42 kDa.

Biorbyt Ltd.

7 Signet Court, Swann Road
Cambridge
CB5 8LA
United Kingdom

Email: info@biorbyt.com, support@biorbyt.com

Phone: +44 (0)1223 859353 | Fax: +1 (415) 651-8558

Biorbyt LLC

68 TW Alexander Drive
Research Triangle Park
Durham
NC 27713
United States

Email: info@biorbyt.com, support@biorbyt.com

Phone: +1 (415) 906-5211 | Fax: +1 (415) 651-8558