

## Product Datasheet

# Recombinant Human Leukemia inhibitory factor (LIF) (Active) (orb1785348)

<b>Catalog Number</b>	orb1785348
<b>Category</b>	Proteins
<b>Description</b>	This Recombinant Human Leukemia inhibitory factor (LIF) spans the amino acid sequence from region 23-202aa. Purity: Greater than 90% as determined by SDS-PAGE.
<b>Tag</b>	C-terminal 10xHis-tagged
<b>Form/Appearance</b>	Lyophilized powder
<b>Buffer/Preservatives</b>	If the delivery form is liquid, the default storage buffer is Tris/PBS-based buffer, 5%-50% glycerol. If the delivery form is lyophilized powder, the buffer before lyophilization is Tris/PBS-based buffer, 6% Trehalose, pH 8.0.
<b>Purity</b>	Greater than 95% as determined by SDS-PAGE.
<b>Protein Sequence</b>	SPLPITPVNATCAIRHPCHNNLMNQIRSQLAQLNGSANALFILYYTAQGEFPNNDKLCGPN VTDFPPFHANGTEKAKLVELYRIVVYLGTSLGNITRDQKILNPSALSLSKLNATADILRGLLS NVLCLCSKYHVGHVDTYGPDTSGKDVVFQKKKLGCCQLLGGYKQIIAVLAQAF
<b>Protein Length</b>	Full Length of Mature Protein
<b>UniProt ID</b>	<b>P15018</b>
<b>MW</b>	23.1 kDa
<b>Application notes</b>	We recommend that this vial be briefly centrifuged prior to opening to bring the contents to the bottom. Please reconstitute protein in deionized sterile water to a concentration of 0.1-1.0 mg/mL. We recommend to add 5-50% of glycerol (final concentration) and aliquot for long-term storage at -20°C/-80°C. Our default final concentration of glycerol is 50%. Customers could use it as reference.

**Biorbyt Ltd.**

7 Signet Court, Swann Road  
Cambridge  
CB5 8LA  
United Kingdom

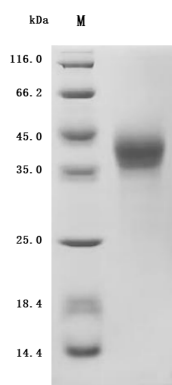
Email: [info@biorbyt.com](mailto:info@biorbyt.com), [support@biorbyt.com](mailto:support@biorbyt.com)  
Phone: [+44 \(0\)1223 859353](tel:+44(0)1223859353) | Fax: [+1 \(415\) 651-8558](tel:+1(415)651-8558)

**Biorbyt LLC**

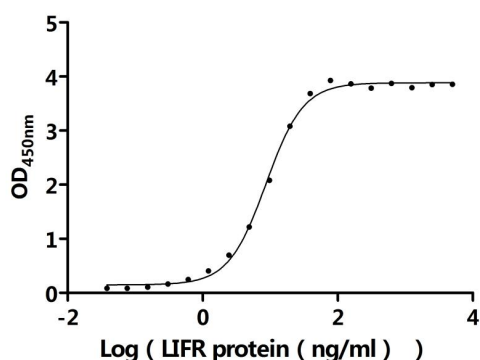
68 TW Alexander Drive  
Research Triangle Park  
Durham  
NC 27713-2847  
United States

Email: [info@biorbyt.com](mailto:info@biorbyt.com), [support@biorbyt.com](mailto:support@biorbyt.com)  
Phone: [+1 \(415\) 906-5211](tel:+1(415)906-5211) | Fax: [+1 \(415\) 651-8558](tel:+1(415)651-8558)

<b>Source</b>	Mammalian cell
<b>Biological Origin</b>	Homo sapiens (Human)
<b>Biological Activity</b>	Measured by its binding ability in a functional ELISA. Immobilized Human LIF at 2 $\mu\text{g}/\text{mL}$ can bind Human LIFR protein. The EC50 is 8.067-9.260 ng/mL.
<b>Expression Region</b>	23-202aa
<b>Storage</b>	The shelf life is related to many factors, storage state, buffer ingredients, storage temperature and the stability of the protein itself. Generally, the shelf life of liquid form is 6 months at $-20^{\circ}\text{C}/-80^{\circ}\text{C}$ . The shelf life of lyophilized form is 12 months at $-20^{\circ}\text{C}/-80^{\circ}\text{C}$ .
<b>Note</b>	For research use only
<b>Expiration Date</b>	6 months from date of receipt.



(Tris-Glycine gel) Discontinuous SDS-PAGE (reduced) with 5% enrichment gel and 15% separation gel.



Measured by its binding ability in a functional ELISA. Immobilized Human LIF at 2  $\mu\text{g}/\text{ml}$  can bind Human LIFR protein. The EC50 is 8.067-9.260 ng/mL.

**Biorbyt Ltd.**

7 Signet Court, Swann Road  
Cambridge  
CB5 8LA  
United Kingdom

Email: [info@biorbyt.com](mailto:info@biorbyt.com), [support@biorbyt.com](mailto:support@biorbyt.com)

Phone: +44 (0)1223 859353 | Fax: +1 (415) 651-8558

**Biorbyt LLC**

68 TW Alexander Drive  
Research Triangle Park  
Durham  
NC 27713-2847  
United States

Email: [info@biorbyt.com](mailto:info@biorbyt.com), [support@biorbyt.com](mailto:support@biorbyt.com)

Phone: +1 (415) 906-5211 | Fax: +1 (415) 651-8558