

Product Datasheet

Recombinant Rat Gastric inhibitory polypeptide receptor (Gipr), partial (Active) (orb1785088)

Catalog Number	orb1785088
Category	Proteins
Description	This Recombinant Rat Gastric inhibitory polypeptide receptor (Gipr), partial (Active) spans the amino acid sequence from region 19-135aa. Purity: Greater than 95% as determined by SDS-PAGE.
Tag	C-terminal 10xHis-tagged
Form/Appearance	Lyophilized powder
Buffer/Preservatives	Lyophilized from a 0.2 µm filtered 20 mM Tris-HCl, 0.5 M NaCl, 6% Trehalose, pH 8.0
Purity	Greater than 95% as determined by SDS-PAGE.
Protein Sequence	RAETDSEGQTTGELYQRWERYGWECQNTLEATEPPSGLACNGSFDMYACWNYTAANTTA RVSCPWYLPWYRQVAAGFVFRQCGSDGQWGSWRDHTQCENPEKNGAFQDQKLILERLQ
Protein Length	Partial
UniProt ID	P43219
MW	14.9 kDa
Application notes	We recommend that this vial be briefly centrifuged prior to opening to bring the contents to the bottom. Please reconstitute protein in deionized sterile water to a concentration of 0.1-1.0 mg/mL. We recommend to add 5-50% of glycerol (final concentration) and aliquot for long-term storage at -20°C/-80°C. Our default final concentration of glycerol is 50%. Customers could use it as reference.
Endotoxins	Less than 1.0 EU/µg as determined by LAL method.

Biorbyt Ltd.

7 Signet Court, Swann Road
Cambridge
CB5 8LA
United Kingdom

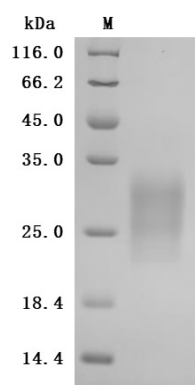
Email: info@biorbyt.com, support@biorbyt.com
Phone: [+44 \(0\)1223 859353](tel:+44(0)1223859353) | Fax: [+1 \(415\) 651-8558](tel:+1(415)651-8558)

Biorbyt LLC

68 TW Alexander Drive
Research Triangle Park
Durham
NC 27713
United States

Email: info@biorbyt.com, support@biorbyt.com
Phone: [+1 \(415\) 906-5211](tel:+1(415)906-5211) | Fax: [+1 \(415\) 651-8558](tel:+1(415)651-8558)

Source	Mammalian cell
Biological Origin	Rattus norvegicus (Rat)
Biological Activity	Measured by its binding ability in a functional ELISA. Immobilized Rat Gipr at 2 µg/mL can bind Anti-Mouse Gipr recombinant antibody, the EC50 is 6.946-8.740 ng/ml.
Expression Region	19-135aa
Storage	The shelf life is related to many factors, storage state, buffer ingredients, storage temperature and the stability of the protein itself. Generally, the shelf life of liquid form is 6 months at -20°C/-80°C. The shelf life of lyophilized form is 12 months at -20°C/-80°C.
Note	For research use only
Expiration Date	6 months from date of receipt.



(Tris-Glycine gel) Discontinuous SDS-PAGE (reduced) with 5% enrichment gel and 15% separation gel.

Biorbyt Ltd.

7 Signet Court, Swann Road
Cambridge
CB5 8LA
United Kingdom

Email: info@biorbyt.com, support@biorbyt.com

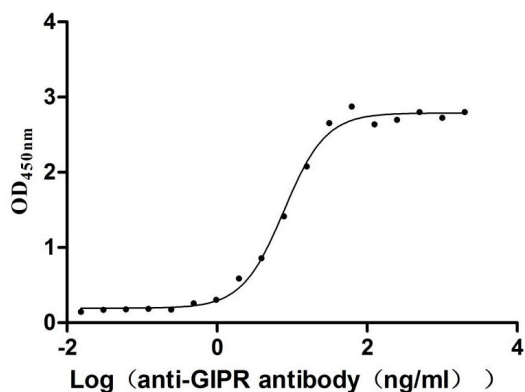
Phone: [+44 \(0\)1223 859353](tel:+44(0)1223859353) | Fax: [+1 \(415\) 651-8558](tel:+1(415)6518558)

Biorbyt LLC

68 TW Alexander Drive
Research Triangle Park
Durham
NC 27713
United States

Email: info@biorbyt.com, support@biorbyt.com

Phone: [+1 \(415\) 906-5211](tel:+1(415)9065211) | Fax: [+1 \(415\) 651-8558](tel:+1(415)6518558)



Measured by its binding ability in a functional ELISA. Immobilized Rat Gipr at 2 μ g/mL can bind Anti-Mouse Gipr recombinant antibody, the EC50 is 6.946-8.740 ng/mL.

Biorbyt Ltd.

7 Signet Court, Swann Road
Cambridge
CB5 8LA
United Kingdom

Email: info@biorbyt.com, support@biorbyt.com

Phone: [+44 \(0\)1223 859353](tel:+44(0)1223859353) | Fax: [+1 \(415\) 651-8558](tel:+1(415)651-8558)

Biorbyt LLC

68 TW Alexander Drive
Research Triangle Park
Durham
NC 27713
United States

Email: info@biorbyt.com, support@biorbyt.com

Phone: [+1 \(415\) 906-5211](tel:+1(415)906-5211) | Fax: [+1 \(415\) 651-8558](tel:+1(415)651-8558)