

Product Datasheet

Rabbit anti-EGFR Recombinant Monoclonal Antibody (orb1784585)

Catalog Number	orb1784585
Category	Antibodies
Description	Rabbit anti-EGFR Recombinant Monoclonal Antibody
Target	EGFR
Clonality	Recombinant
Species/Host	Rabbit
Conjugation	Unconjugated
Reactivity	Human, Mouse
Form/Appearance	Whole IgG
Concentration	1000 µg/ml
Buffer/Preservatives	Borate Buffered Saline (BBS) pH 8.2 with 0.09% Sodium Azide, rAlbumin-Free
Immunogen	Between 1160 and C-terminus
UniProt ID	P00533
Tested applications	FC, ICC, IHC, IP, WB
Dilution range	WB: 1:1000, IP: 6 µl/mg lysate, IHC: 1:100 to 1:500. Epitope retrieval with citrate buffer pH 6.0 is recommended for FFPE tissue sections, ICC: 1:100 to 1:500. Epitope retrieval with citrate buffer pH 6.0 is recommended for FFPE cell sections
Application notes	Format: Whole IgG

Biorbyt Ltd.

7 Signet Court, Swann Road
Cambridge
CB5 8LA
United Kingdom

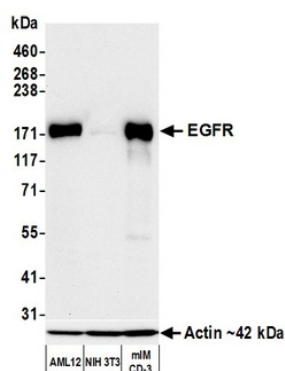
Email: info@biorbyt.com, support@biorbyt.com
Phone: [+44 \(0\)1223 859353](tel:+44(0)1223859353) | Fax: [+1 \(415\) 651-8558](tel:+1(415)651-8558)

Biorbyt LLC

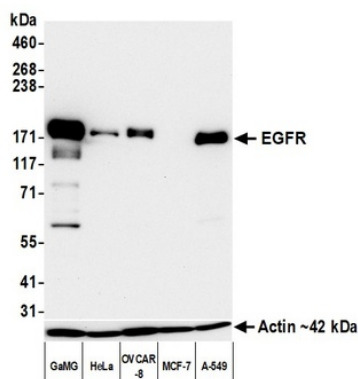
68 TW Alexander Drive
Research Triangle Park
Durham
NC 27713
United States

Email: info@biorbyt.com, support@biorbyt.com
Phone: [+1 \(415\) 906-5211](tel:+1(415)906-5211) | Fax: [+1 \(415\) 651-8558](tel:+1(415)651-8558)

Antibody Type	Primary Antibody
Clone Number	BLR252L
Storage	Maintain refrigerated at 2-8°C for up to 2 weeks. For long term storage store at -20°C in small aliquots to prevent freeze-thaw cycles.
Note	For research use only
Expiration Date	12 months from date of receipt.



Detection of mouse EGFR by western blot. Samples: Whole cell lysate (10 µg) from AML12, NIH 3T3, and mIMCD-3 cells prepared using NETN lysis buffer. Antibody: Rabbit anti-EGFR recombinant monoclonal antibody (orb1784585) used at 1:1000. Secondary: HRP-conjugated goat anti-rabbit IgG. Detection: Chemiluminescence with an exposure time of 30 seconds. Lower Panel: Rabbit anti-Actin recombinant monoclonal antibody.



Detection of human EGFR by western blot. Samples: Whole cell lysate (10 µg) from GaMG, HeLa, OVCAR-8, MCF-7, and A-549 cells prepared using NETN lysis buffer. Antibody: Rabbit anti-EGFR recombinant monoclonal antibody (orb1784585) used at 1:1000. Secondary: HRP-conjugated goat anti-rabbit IgG. Detection: Chemiluminescence with an exposure time of 30 seconds. Lower Panel: Rabbit anti-Actin recombinant monoclonal antibody.

Biorbyt Ltd.

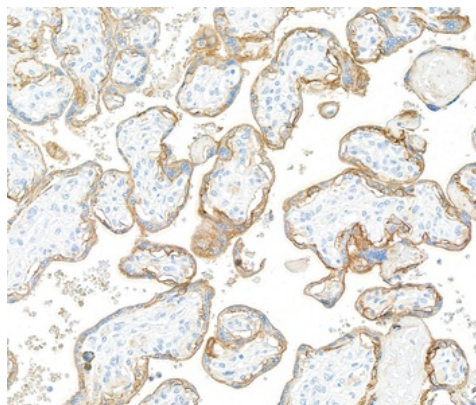
7 Signet Court, Swann Road
Cambridge
CB5 8LA
United Kingdom

Email: info@biorbyt.com, support@biorbyt.com
Phone: +44 (0)1223 859353 | Fax: +1 (415) 651-8558

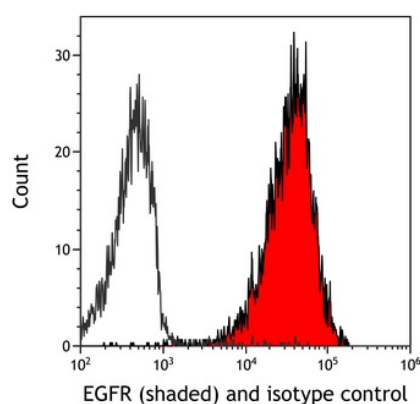
Biorbyt LLC

68 TW Alexander Drive
Research Triangle Park
Durham
NC 27713
United States

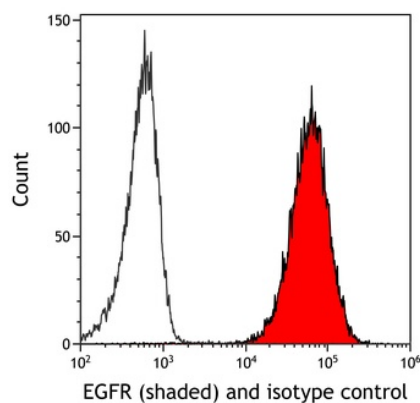
Email: info@biorbyt.com, support@biorbyt.com
Phone: +1 (415) 906-5211 | Fax: +1 (415) 651-8558



Detection of human EGFR by immunohistochemistry. Sample: FFPE section of human placenta. Antibody: Rabbit anti-EGFR recombinant monoclonal antibody (orb1784585). Secondary: HRP-conjugated goat anti-rabbit IgG.



Detection of mouse EGFR (shaded) in mIMCD-3 cells by flow cytometry. Antibody: Rabbit anti-EGFR recombinant monoclonal antibody (orb1784585) or isotype control (unshaded). Secondary: DyLight® 650-conjugated goat anti-rabbit IgG.



Detection of human EGFR (shaded) in FaDu cells by flow cytometry. Antibody: Rabbit anti-EGFR recombinant monoclonal antibody (orb1784585) or isotype control (unshaded). Secondary: DyLight® 650-conjugated goat anti-rabbit IgG.

Biorbyt Ltd.

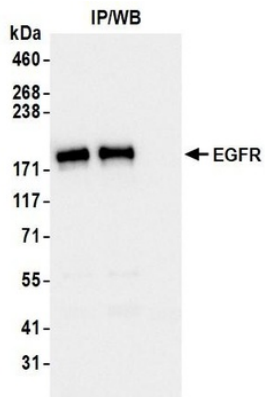
7 Signet Court, Swann Road
Cambridge
CB5 8LA
United Kingdom

Email: info@biorbyt.com, support@biorbyt.com
Phone: +44 (0)1223 859353 | Fax: +1 (415) 651-8558

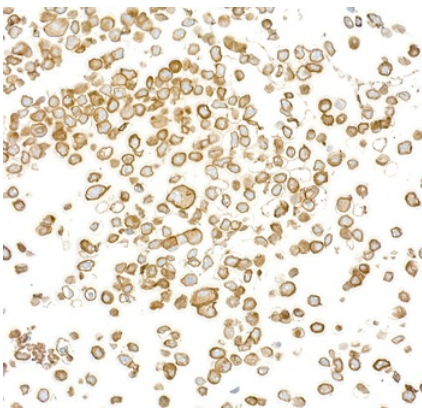
Biorbyt LLC

68 TW Alexander Drive
Research Triangle Park
Durham
NC 27713
United States

Email: info@biorbyt.com, support@biorbyt.com
Phone: +1 (415) 906-5211 | Fax: +1 (415) 651-8558



Detection of human EGFR by western blot of immunoprecipitates. Samples: Whole cell lysate (1 mg per IP; 10% of IP loaded) from OVCAR-8 cells prepared using NETN lysis buffer. Antibodies: Rabbit anti-EGFR recombinant monoclonal antibody (orb1784585) used for IP at 6 μ l per reaction.



Detection of human EGFR by immunocytochemistry. Sample: FFPE section of A-431 cells. Antibody: Rabbit anti-EGFR recombinant monoclonal antibody (orb1784585). Secondary: HRP-conjugated goat anti-rabbit IgG.

Biorbyt Ltd.

7 Signet Court, Swann Road
Cambridge
CB5 8LA
United Kingdom

Email: info@biorbyt.com, support@biorbyt.com

Phone: +44 (0)1223 859353 | Fax: +1 (415) 651-8558

Biorbyt LLC

68 TW Alexander Drive
Research Triangle Park
Durham
NC 27713
United States

Email: info@biorbyt.com, support@biorbyt.com

Phone: +1 (415) 906-5211 | Fax: +1 (415) 651-8558