

Product Datasheet

Rabbit P-Selectin/CD62P Recombinant Monoclonal Antibody (orb1784576)

Catalog Number	orb1784576
Category	Antibodies
Description	Rabbit P-Selectin/CD62P Recombinant Monoclonal Antibody
Target	P-Selectin/CD62P
Clonality	Recombinant
Species/Host	Rabbit
Isotype	IgG
Conjugation	Unconjugated
Reactivity	Human
Form/Appearance	Liquid
Concentration	1000 µg/ml
Buffer/Preservatives	Borate Buffered Saline (BBS) pH 8.2 with 0.09% Sodium Azide, rAlbumin-Free
Purity	Recombinant antibody was purified from cell culture supernatant
Purification	Purified
Immunogen	Residues 42-771 (ECD)
UniProt ID	P16109
Tested applications	ICC, IF, IHC, WB

Biorbyt Ltd.

7 Signet Court, Swann Road
Cambridge
CB5 8LA
United Kingdom

Email: info@biorbyt.com, support@biorbyt.com

Phone: [+44 \(0\)1223 859353](tel:+44(0)1223859353) | Fax: [+1 \(415\) 651-8558](tel:+1(415)651-8558)

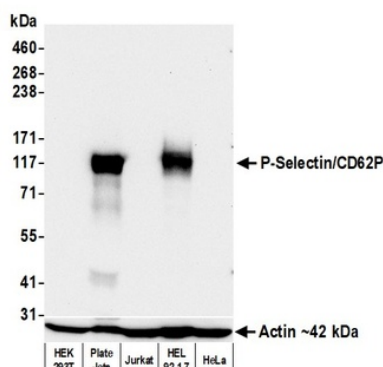
Biorbyt LLC

68 TW Alexander Drive
Research Triangle Park
Durham
NC 27713
United States

Email: info@biorbyt.com, support@biorbyt.com

Phone: [+1 \(415\) 906-5211](tel:+1(415)906-5211) | Fax: [+1 \(415\) 651-8558](tel:+1(415)651-8558)

Dilution range	Immunocytochemistry (ICC) 1:100 to 1:500. Epitope retrieval with citrate buffer pH 6.0 is recommended for FFPE cell sections. Immunohistochemistry (IHC) 1:100 to 1:500. Epitope retrieval with citrate buffer pH 6.0 is recommended for FFPE tissue sections. Multiplex Immunofluorescence (mIF) 1:100. Western Blot (WB) 1:1000
Application notes	All western blot analysis is performed using 5% Milk-TBST for blocking and as antibody diluent. Primary antibody is incubated overnight
Antibody Type	Primary Antibody
Clone Number	BLR267L
Storage	Maintain refrigerated at 2-8°C for up to 2 weeks. For long term storage store at -20°C in small aliquots to prevent freeze-thaw cycles.
Background	-Selectin, or CD62P, is a Ca(2+)-dependent receptor for myeloid cells that binds to carbohydrates on neutrophils and monocytes. It mediates the interaction of activated endothelial cells or platelets with leukocytes
Note	For research use only
NCBI	NP_002996.2
Expiration Date	12 months from date of receipt.



Detection of human P-Selectin/CD62P by western blot. Samples: Whole cell lysate (25 µg) from HEK293T, Platelets, Jurkat, HEL 92.1.7, and HeLa cells prepared using NETN lysis buffer. Antibody: Rabbit anti-P-Selectin/CD62P recombinant monoclonal antibody (orb1784576) used at 1:1000. Secondary: HRP-conjugated goat anti-rabbit IgG. Detection: Chemiluminescence with an exposure time of 30 seconds. Lower Panel: Rabbit anti-Actin recombinant monoclonal antibody.

Biorbyt Ltd.

7 Signet Court, Swann Road
Cambridge
CB5 8LA
United Kingdom

Email: info@biorbyt.com, support@biorbyt.com

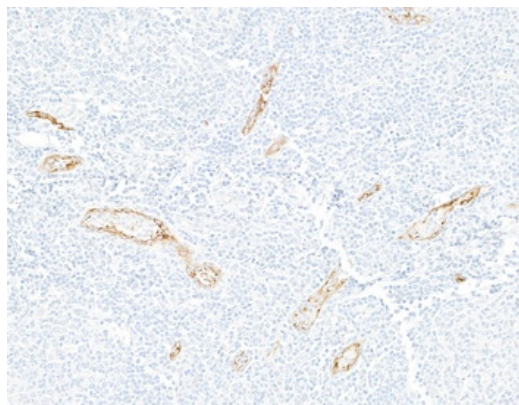
Phone: +44 (0)1223 859353 | Fax: +1 (415) 651-8558

Biorbyt LLC

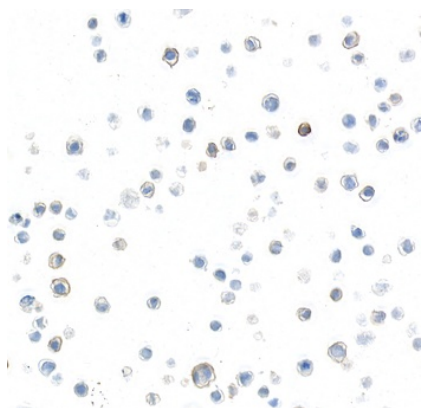
68 TW Alexander Drive
Research Triangle Park
Durham
NC 27713
United States

Email: info@biorbyt.com, support@biorbyt.com

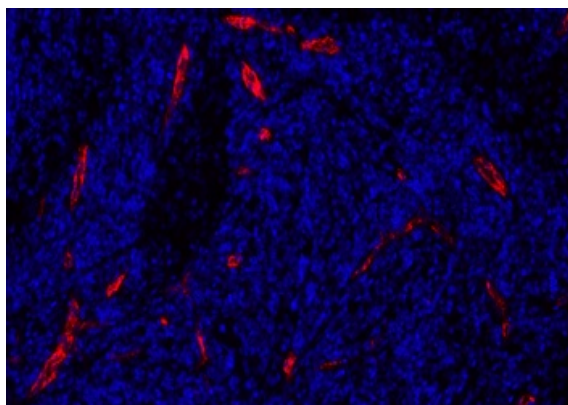
Phone: +1 (415) 906-5211 | Fax: +1 (415) 651-8558



Detection of human P-Selectin/CD62P by immunohistochemistry. Sample: FFPE section of tonsil. Antibody: Rabbit anti-P-Selectin/CD62P recombinant monoclonal antibody (orb1784576). Secondary: HRP-conjugated goat anti-rabbit IgG.



Detection of human P-Selectin/CD62P by immunocytochemistry. Sample: FFPE section of HEL 92.1.7 cells. Antibody: Rabbit anti-P-Selectin/CD62P recombinant monoclonal antibody (orb1784576). Secondary: HRP-conjugated goat anti-rabbit IgG.



Detection of human P-Selectin/CD62P (red) by immunofluorescence. Sample: FFPE section of metastatic lymph node. Antibody: Rabbit anti-P-Selectin/CD62P recombinant monoclonal antibody (orb1784576) used at 1:100. Secondary: Invitrogen Goat anti-rabbit IgG Alexa Fluor™ Plus 647 1:400. Counterstain: DAPI (blue).

Biorbyt Ltd.

7 Signet Court, Swann Road
Cambridge
CB5 8LA
United Kingdom

Email: info@biorbyt.com, support@biorbyt.com
Phone: [+44 \(0\)1223 859353](tel:+44(0)1223859353) | Fax: [+1 \(415\) 651-8558](tel:+1(415)651-8558)

Biorbyt LLC

68 TW Alexander Drive
Research Triangle Park
Durham
NC 27713
United States

Email: info@biorbyt.com, support@biorbyt.com
Phone: [+1 \(415\) 906-5211](tel:+1(415)906-5211) | Fax: [+1 \(415\) 651-8558](tel:+1(415)651-8558)