

## Product Datasheet

### Protein Molecular Weight Marker (orb1784560)

|                             |   |
|-----------------------------|---|
| <b>Catalog Number</b>       | orb1784560  |
| <b>Category</b>             | Tools   |
| <b>Description</b>          | Protein Molecular Weight Marker   |
| <b>Conjugation</b>          | Unconjugated  |
| <b>Form/Appearance</b>      | Liquid (in 1x Loading Buffer)   |
| <b>Concentration</b>        | 1X  |
| <b>Buffer/Preservatives</b> | Preservative: 0.01% (w/v) Sodium Azide. Stabilizer: None; Buffer: 2.5 mM Tris-HCl, pH 6.8, 2% (w/v) SDS, 250 mM NaCl, 1mM EDTA, 4% (v/v) $\beta$ -Mercaptoethanol, 35% (v/v) Glycerol and 0.05% (w/v) bromophenol blue  |
| <b>Purity</b>               | Protein Molecular Weight Marker is supplied in 1X loading buffer and is ready-to-use. It contains: [62.5 mM Tris-HCl, pH 6.8, 2% (w/v) SDS, 250 mM NaCl, 1mM EDTA, 4% (v/v) $\beta$ -Mercaptoethanol, 35% (v/v) Glycerol and 0.05% (w/v) bromophenol blue.] This product are unstained markers optimized for use with Coomassie blue staining, but the loading volume can be adjusted for compatibility with other staining methods (i.e. silver staining). The intensity of the 67 kDa bovine albumin band has been increased to serve as a reference. |
| <b>Tested applications</b>  | SDS-PAGE  |
| <b>Application notes</b>    | Protein Molecular Weight Marker has been tested and is designed for use in accurate estimation of protein molecular weight in SDS-polyacrylamide gel electrophoresis and western blotting. Thaw the cocktail at room temperature. Gently invert vial several times to ensure that the solution is homogeneous and that any precipitated material is re-dissolved. A loading volume of 5-10 $\mu$ l is appropriate for most gel formats  |
| <b>Storage</b>              | Store vial at -20° C.   |

**Biorbyt Ltd.**

7 Signet Court, Swann Road  
Cambridge  
CB5 8LA  
United Kingdom

Email: [info@biorbyt.com](mailto:info@biorbyt.com), [support@biorbyt.com](mailto:support@biorbyt.com)  
Phone: [+44 \(0\)1223 859353](tel:+44(0)1223859353) | Fax: [+1 \(415\) 651-8558](tel:+1(415)651-8558)

**Biorbyt LLC**

68 TW Alexander Drive  
Research Triangle Park  
Durham  
NC 27713-2847  
United States

Email: [info@biorbyt.com](mailto:info@biorbyt.com), [support@biorbyt.com](mailto:support@biorbyt.com)  
Phone: [+1 \(415\) 906-5211](tel:+1(415)906-5211) | Fax: [+1 \(415\) 651-8558](tel:+1(415)651-8558)

**Dry Ice Shipping**

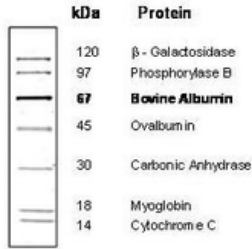
**Please note: This product requires shipment on dry ice. A dry ice surcharge will apply.**

**Note**

For research use only

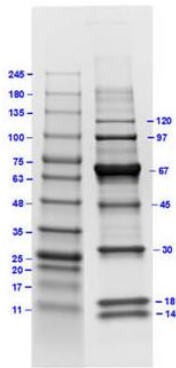
**Expiration Date**

12 months from date of receipt.



SDS PAGE of Protein Molecular Weight Marker, 14-120 kDa.

4-20% Tris-Glycine SDS-PAGE  
Stained with Coomassie Blue



SDS PAGE Results of Protein Molecular Weight Marker 14-120 kDa. Lane 1: Opal Prestained Molecular Weight Marker (11-245 kDa). [7 μL] Lane 2: Protein Molecular Weight Marker (14-120 kDa) (p/n orb348606). [5 μL] 4-20% Gel, Coomassie Stained.

**Biorbyt Ltd.**

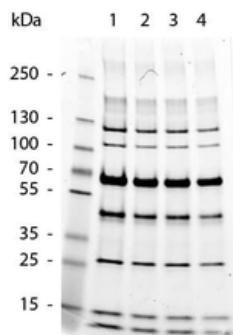
7 Signet Court, Swann Road  
Cambridge  
CB5 8LA  
United Kingdom

Email: [info@biorbyt.com](mailto:info@biorbyt.com), [support@biorbyt.com](mailto:support@biorbyt.com)  
Phone: [+44 \(0\)1223 859353](tel:+44(0)1223859353) | Fax: [+1 \(415\) 651-8558](tel:+1(415)6518558)

**Biorbyt LLC**

68 TW Alexander Drive  
Research Triangle Park  
Durham  
NC 27713-2847  
United States

Email: [info@biorbyt.com](mailto:info@biorbyt.com), [support@biorbyt.com](mailto:support@biorbyt.com)  
Phone: [+1 \(415\) 906-5211](tel:+1(415)9065211) | Fax: [+1 \(415\) 651-8558](tel:+1(415)6518558)



SDS-Page of Protein Molecular Weight Marker. Lane 1: Protein Molecular Weight Marker 12.5 uL. Lane 2: Protein Molecular Weight Marker 10.0 uL. Lane 3: Protein Molecular Weight Marker 7.5 uL. Lane 4: Protein Molecular Weight Marker 5.0 uL.

**Biorbyt Ltd.**

7 Signet Court, Swann Road  
Cambridge  
CB5 8LA  
United Kingdom

Email: [info@biorbyt.com](mailto:info@biorbyt.com), [support@biorbyt.com](mailto:support@biorbyt.com)

Phone: [+44 \(0\)1223 859353](tel:+44(0)1223859353) | Fax: [+1 \(415\) 651-8558](tel:+1(415)651-8558)

**Biorbyt LLC**

68 TW Alexander Drive  
Research Triangle Park  
Durham  
NC 27713-2847  
United States

Email: [info@biorbyt.com](mailto:info@biorbyt.com), [support@biorbyt.com](mailto:support@biorbyt.com)

Phone: [+1 \(415\) 906-5211](tel:+1(415)906-5211) | Fax: [+1 \(415\) 651-8558](tel:+1(415)651-8558)