

Product Datasheet

Enolase-2 Rabbit Polyclonal Antibody (orb1735065)

| | |
|-----------------------------|---|
| Catalog Number | orb1735065 |
| Category | Antibodies |
| Description | Enolase-2 Rabbit Polyclonal Antibody |
| Target | Enolase-2 / ENO2 |
| Clonality | Polyclonal |
| Species/Host | Rabbit |
| Isotype | Rabbit-IgG |
| Conjugation | Unconjugated |
| Reactivity | Human, Mouse, Rat |
| Buffer/Preservatives | 100mM Tris Glycine, 20% Glycerol (pH7). 0.025% ProClin 300 was added as a preservative. |
| Immunogen | Synthetic peptide /Enolase-2 / ENO2 |
| Tested applications | IF, IHC, WB |
| Dilution range | Western Blot 1:2000- 1:14000, Immunofluorescence 1:500 - 1:1000, Immunohistochemistry (Paraffin) 1:400 - 1:600 |
| Application notes | Gently mix before use. Optimal concentrations and conditions for each application should be determined by the user. |
| Antibody Type | Primary Antibody |

Biorbyt Ltd.

7 Signet Court, Swann Road
Cambridge
CB5 8LA
United Kingdom

Email: info@biorbyt.com, support@biorbyt.com

Phone: [+44 \(0\)1223 859353](tel:+44(0)1223859353) | Fax: [+1 \(415\) 651-8558](tel:+1(415)651-8558)

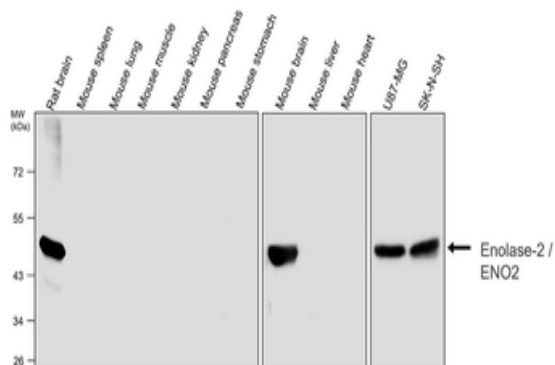
Biorbyt LLC

68 TW Alexander Drive
Research Triangle Park
Durham
NC 27713
United States

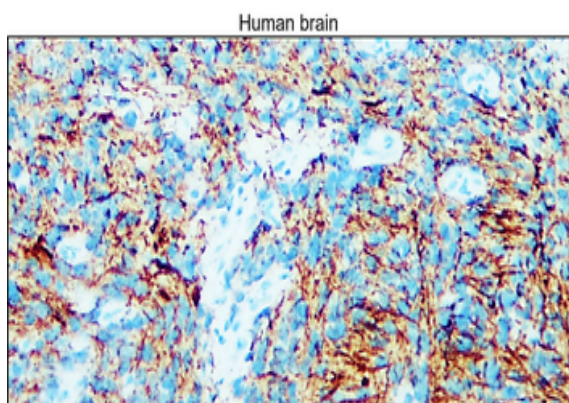
Email: info@biorbyt.com, support@biorbyt.com

Phone: [+1 \(415\) 906-5211](tel:+1(415)906-5211) | Fax: [+1 \(415\) 651-8558](tel:+1(415)651-8558)

- Storage** Maintain refrigerated at 2-8°C for up to 2 weeks. For long term storage store at -20°C in small aliquots to prevent freeze-thaw cycles.
- Note** For research use only
- Expiration Date** 12 months from date of receipt.



Anti-NSE / Enolase-2 antibody at 1/3000 dilution, Lysates at 30 µg per lane. This blot was produced using a 10% SDS-PAGE. The gel was run at 140V for 50 minutes before being transferred onto a Nitrocellulose membrane was then blocked for an hour before being incubated with orb1735065 overnight at 4°C.



Immunohistochemical analysis of paraffin embedded human brain tissue labeling NSE / Enolase-2 with orb1735065 at 1/400.

Biorbyt Ltd.

7 Signet Court, Swann Road
Cambridge
CB5 8LA
United Kingdom

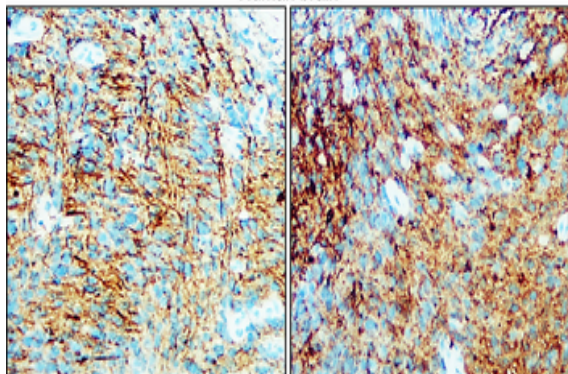
Email: info@biorbyt.com, support@biorbyt.com
Phone: +44 (0)1223 859353 | Fax: +1 (415) 651-8558

Biorbyt LLC

68 TW Alexander Drive
Research Triangle Park
Durham
NC 27713
United States

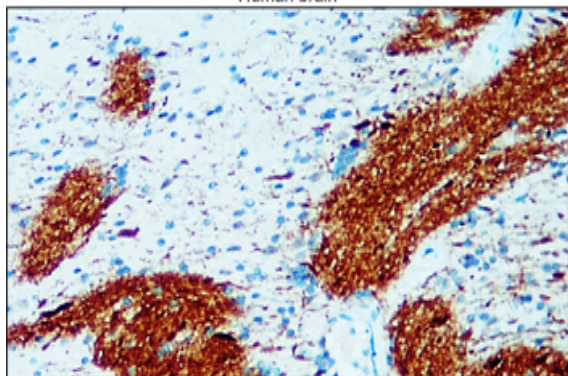
Email: info@biorbyt.com, support@biorbyt.com
Phone: +1 (415) 906-5211 | Fax: +1 (415) 651-8558

Human brain



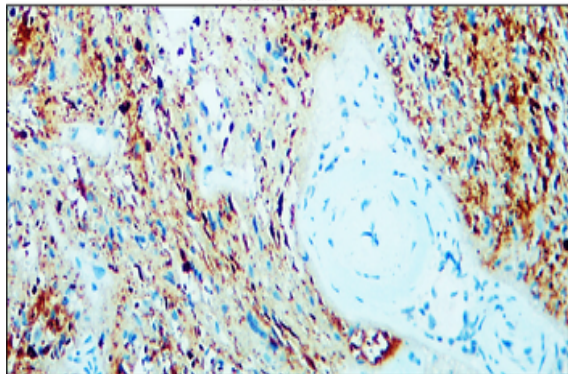
Immunohistochemical analysis of paraffin embedded human brain tissue labeling NSE / Enolase-2 with orb1735065 at 1/400.

Human brain



Immunohistochemical analysis of paraffin embedded human brain tissue labeling NSE / Enolase-2 with orb1735065 at 1/400.

Human brain



Immunohistochemical analysis of paraffin embedded human brain tissue labeling NSE / Enolase-2 with orb1735065 at 1/400.

Biorbyt Ltd.

7 Signet Court, Swann Road
Cambridge
CB5 8LA
United Kingdom

Email: info@biorbyt.com, support@biorbyt.com

Phone: +44 (0)1223 859353 | Fax: +1 (415) 651-8558

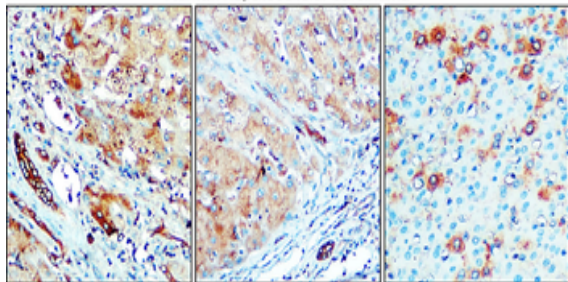
Biorbyt LLC

68 TW Alexander Drive
Research Triangle Park
Durham
NC 27713
United States

Email: info@biorbyt.com, support@biorbyt.com

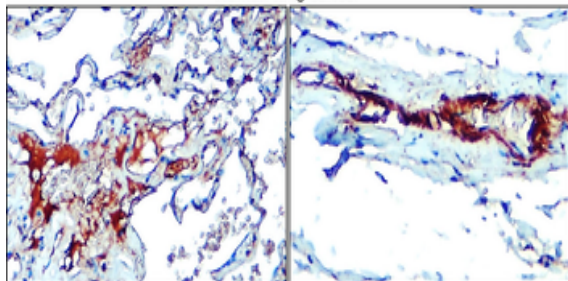
Phone: +1 (415) 906-5211 | Fax: +1 (415) 651-8558

Human hepatocellular carcinoma



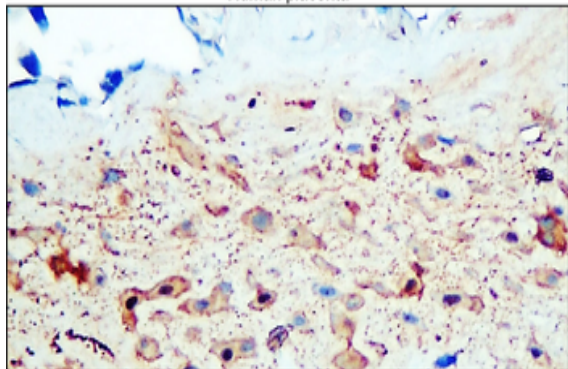
Immunohistochemical analysis of paraffin embedded Human hepatocellular carcinoma tissue labeling NSE / Enolase-2 with orb1735065 at 1/400.

Human lung cancer



Immunohistochemical analysis of paraffin embedded Human lung cancer tissue labeling NSE / Enolase-2 with orb1735065 at 1/400.

Human placenta



Immunohistochemical analysis of paraffin embedded Human placenta tissue labeling NSE / Enolase-2 with orb1735065 at 1/400.

Biorbyt Ltd.

7 Signet Court, Swann Road
Cambridge
CB5 8LA
United Kingdom

Email: info@biorbyt.com, support@biorbyt.com

Phone: +44 (0)1223 859353 | Fax: +1 (415) 651-8558

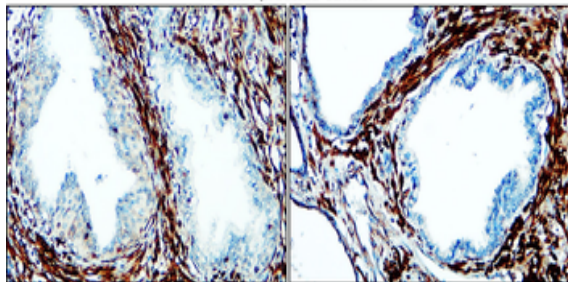
Biorbyt LLC

68 TW Alexander Drive
Research Triangle Park
Durham
NC 27713
United States

Email: info@biorbyt.com, support@biorbyt.com

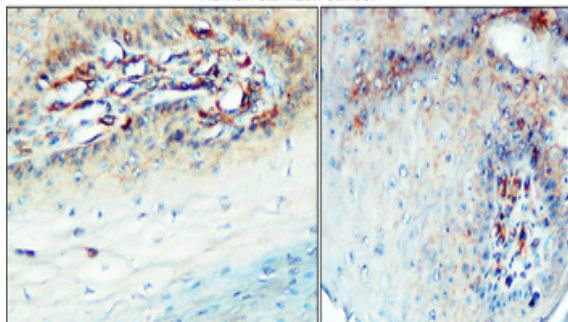
Phone: +1 (415) 906-5211 | Fax: +1 (415) 651-8558

Human prostate cancer



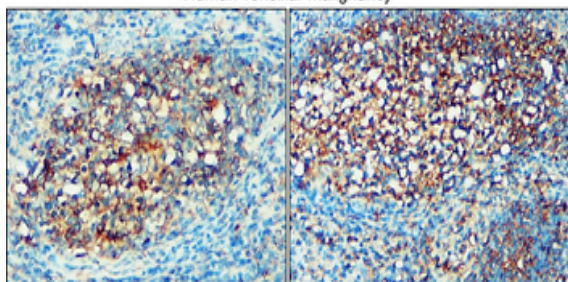
Immunohistochemical analysis of paraffin embedded Human prostate cancer tissue labeling NSE / Enolase-2 with orb1735065 at 1/400.

Human stomach cancer



Immunohistochemical analysis of paraffin embedded Human stomach cancer tissue labeling NSE / Enolase-2 with orb1735065 at 1/400.

Human Tonsillar malignancy



Immunohistochemical analysis of paraffin embedded Human Tonsillar malignancy tissue labeling NSE / Enolase-2 with orb1735065 at 1/400.

Biorbyt Ltd.

7 Signet Court, Swann Road
Cambridge
CB5 8LA
United Kingdom

Email: info@biorbyt.com, support@biorbyt.com

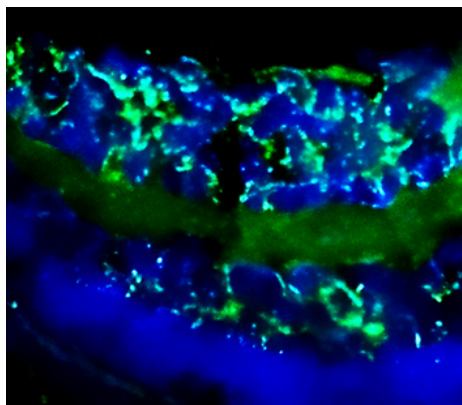
Phone: +44 (0)1223 859353 | Fax: +1 (415) 651-8558

Biorbyt LLC

68 TW Alexander Drive
Research Triangle Park
Durham
NC 27713
United States

Email: info@biorbyt.com, support@biorbyt.com

Phone: +1 (415) 906-5211 | Fax: +1 (415) 651-8558



Immunohistochemistry (Frozen sections), Sample: mouse retina tissue sections, Antibody: Enolase-2 / ENO2 antibody (orb1735065) at 1/500 dilution.

Biorbyt Ltd.

7 Signet Court, Swann Road
Cambridge
CB5 8LA
United Kingdom

Email: info@biorbyt.com, support@biorbyt.com

Phone: [+44 \(0\)1223 859353](tel:+44(0)1223859353) | Fax: [+1 \(415\) 651-8558](tel:+1(415)651-8558)

Biorbyt LLC

68 TW Alexander Drive
Research Triangle Park
Durham
NC 27713
United States

Email: info@biorbyt.com, support@biorbyt.com

Phone: [+1 \(415\) 906-5211](tel:+1(415)906-5211) | Fax: [+1 \(415\) 651-8558](tel:+1(415)651-8558)