

Product Datasheet

Rabbit KLF5 Recombinant Monoclonal Antibody (orb1733253)

Catalog Number	orb1733253
Category	Antibodies
Description	KLF5 Antibody
Target	KLF5
Clonality	Recombinant
Species/Host	Rabbit
Isotype	IgG
Conjugation	Unconjugated
Reactivity	Human, Mouse
Form/Appearance	Liquid
Concentration	1000 µg/ml
Buffer/Preservatives	Borate Buffered Saline (BBS) pH 8.2 with 0.09% Sodium Azide, rAlbumin-Free
Purification	Purified
Immunogen	Between 325 and 375
UniProt ID	Q13887
Tested applications	FC, ICC, IHC, IP, WB

Biorbyt Ltd.

7 Signet Court, Swann Road
Cambridge
CB5 8LA
United Kingdom

Email: info@biorbyt.com, support@biorbyt.com
Phone: [+44 \(0\)1223 859353](tel:+44(0)1223859353) | Fax: [+1 \(415\) 651-8558](tel:+1(415)651-8558)

Biorbyt LLC

68 TW Alexander Drive
Research Triangle Park
Durham
NC 27713
United States

Email: info@biorbyt.com, support@biorbyt.com
Phone: [+1 \(415\) 906-5211](tel:+1(415)906-5211) | Fax: [+1 \(415\) 651-8558](tel:+1(415)651-8558)

Dilution range

Application : Flow-Cyt , ApplicationDilutionRange : Fixed in 4% formaldehyde and permeabilized with 90% methanol. 0.1 µl per 1×10^6 cells. , Application : ICC , ApplicationDilutionRange : 1:100 to 1:500. Epitope retrieval with citrate buffer pH 6.0 is recommended for FFPE cell sections. , Application : IHC , ApplicationDilutionRange : 1:100 to 1:500. Epitope retrieval with citrate buffer pH 6.0 is recommended for FFPE tissue sections. , Application : IP , ApplicationDilutionRange : 6 µl/mg lysate , Application : WB , ApplicationDilutionRange : 1:1000

Application notes

Format: Whole IgG

Antibody Type

Primary Antibody

Clone Number

BLR243L

Storage

Maintain refrigerated at 2-8°C for up to 2 weeks. For long term storage store at -20°C in small aliquots to prevent freeze-thaw cycles.

Note

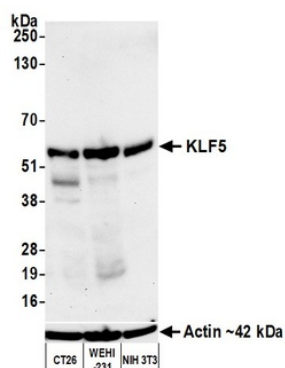
For research use only

NCBI

[NP_001721.2](#)

Expiration Date

12 months from date of receipt.



Detection of mouse KLF5 by western blot. Samples: Whole cell lysate (25 µg) from CT26, WEHI-231, and NIH 3T3 cells prepared using NETN lysis buffer. Antibody: Rabbit anti-KLF5 recombinant monoclonal antibody (orb1733253) used at 1:1000. Secondary: HRP-conjugated goat anti-rabbit IgG. Chemiluminescence with an exposure time of 75 seconds. Lower Panel: Rabbit anti-Actin recombinant monoclonal antibody.

Biorbyt Ltd.

7 Signet Court, Swann Road
Cambridge
CB5 8LA
United Kingdom

Email: info@biorbyt.com, support@biorbyt.com

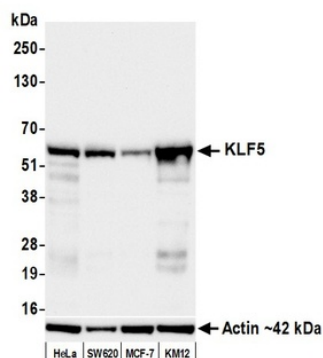
Phone: +44 (0)1223 859353 | Fax: +1 (415) 651-8558

Biorbyt LLC

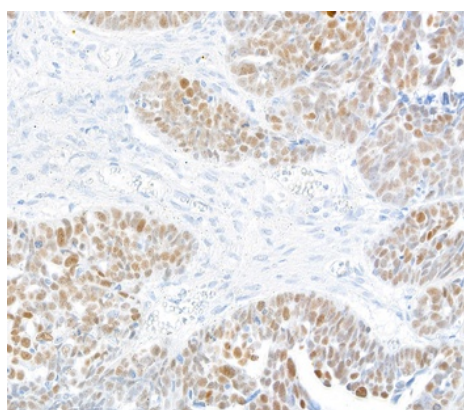
68 TW Alexander Drive
Research Triangle Park
Durham
NC 27713
United States

Email: info@biorbyt.com, support@biorbyt.com

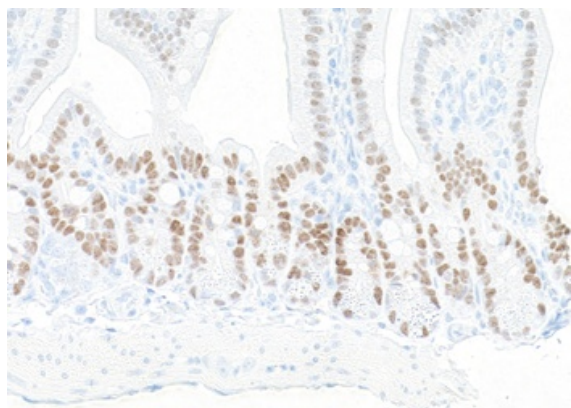
Phone: +1 (415) 906-5211 | Fax: +1 (415) 651-8558



Detection of human KLF5 by western blot. Samples: Whole cell lysate (25 μ g) from HeLa, SW620, MCF-7, and KM12 cells prepared using NETN lysis buffer. Antibody: Rabbit anti-KLF5 recombinant monoclonal antibody (orb1733253) used at 1:1000. Secondary: HRP-conjugated goat anti-rabbit IgG. Chemiluminescence with an exposure time of 10 seconds. Lower Panel: Rabbit anti-Actin recombinant monoclonal antibody.



Detection of human KLF5 by immunohistochemistry. Sample: FFPE section of human ovarian carcinoma. Antibody: Rabbit anti-KLF5 recombinant monoclonal antibody (orb1733253). Secondary: HRP-conjugated goat anti-rabbit IgG.



Detection of mouse KLF5 by immunohistochemistry. Sample: FFPE section of mouse gut. Antibody: Rabbit anti-KLF5 recombinant monoclonal antibody (orb1733253). Secondary: HRP-conjugated goat anti-rabbit IgG.

Biorbyt Ltd.

7 Signet Court, Swann Road
Cambridge
CB5 8LA
United Kingdom

Email: info@biorbyt.com, support@biorbyt.com

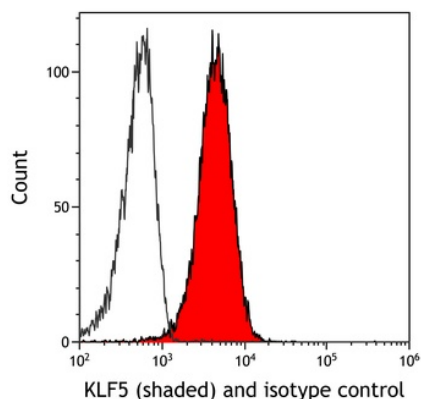
Phone: +44 (0)1223 859353 | Fax: +1 (415) 651-8558

Biorbyt LLC

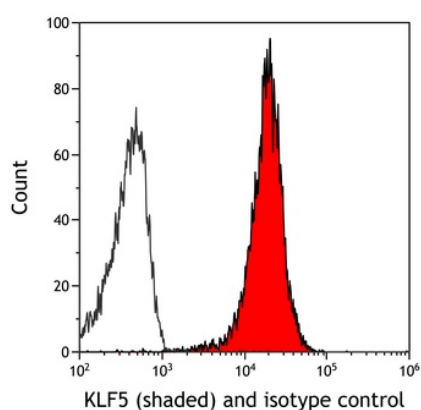
68 TW Alexander Drive
Research Triangle Park
Durham
NC 27713
United States

Email: info@biorbyt.com, support@biorbyt.com

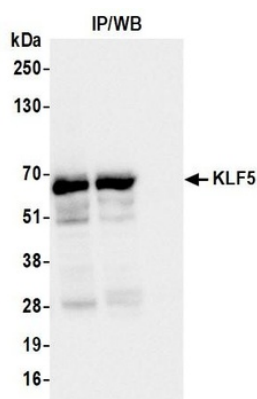
Phone: +1 (415) 906-5211 | Fax: +1 (415) 651-8558



Detection of mouse KLF5 (shaded) in NIH3T3 cells by flow cytometry. Antibody: Rabbit anti-KLF5 recombinant monoclonal antibody (orb1733253) or isotype control (unshaded). Secondary: DyLight® 650-conjugated goat anti-rabbit IgG.



Detection of human KLF5 (shaded) in HT-29 cells by flow cytometry. Antibody: Rabbit anti-KLF5 recombinant monoclonal antibody (orb1733253) or isotype control (unshaded). Secondary: DyLight® 650-conjugated goat anti-rabbit IgG.



Detection of human KLF5 by western blot of immunoprecipitates. Samples: Whole cell lysate (1.0 mg per IP reaction; 20% of IP loaded) from KM12 cells prepared using NETN lysis buffer. Antibodies: Rabbit anti-KLF5 recombinant monoclonal antibody (orb1733253) used for IP at 6 µl/mg lysate.

Biorbyt Ltd.

7 Signet Court, Swann Road
Cambridge
CB5 8LA
United Kingdom

Email: info@biorbyt.com, support@biorbyt.com
Phone: +44 (0)1223 859353 | Fax: +1 (415) 651-8558

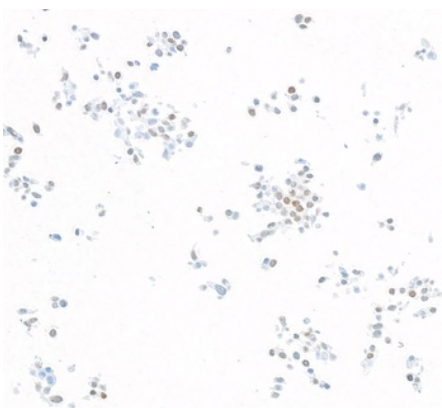
Biorbyt LLC

68 TW Alexander Drive
Research Triangle Park
Durham
NC 27713
United States

Email: info@biorbyt.com, support@biorbyt.com
Phone: +1 (415) 906-5211 | Fax: +1 (415) 651-8558



Detection of human KLF5 by immunocytochemistry. Sample: FFPE section of HT-29 cells. Antibody: Rabbit anti-KLF5 recombinant monoclonal antibody (orb1733253). Secondary: HRP-conjugated goat anti-rabbit IgG.



Detection of mouse KLF5 by immunocytochemistry. Sample: FFPE section of CT26 cells. Antibody: Rabbit anti-KLF5 recombinant monoclonal antibody (orb1733253). Secondary: HRP-conjugated goat anti-rabbit IgG.

Biorbyt Ltd.

7 Signet Court, Swann Road
Cambridge
CB5 8LA
United Kingdom

Email: info@biorbyt.com, support@biorbyt.com

Phone: [+44 \(0\)1223 859353](tel:+44(0)1223859353) | Fax: [+1 \(415\) 651-8558](tel:+1(415)651-8558)

Biorbyt LLC

68 TW Alexander Drive
Research Triangle Park
Durham
NC 27713
United States

Email: info@biorbyt.com, support@biorbyt.com

Phone: [+1 \(415\) 906-5211](tel:+1(415)906-5211) | Fax: [+1 \(415\) 651-8558](tel:+1(415)651-8558)