

## Product Datasheet

# Rabbit JDP2 Recombinant Monoclonal Antibody (orb1733245)

<b>Catalog Number</b>	orb1733245
<b>Category</b>	Antibodies
<b>Description</b>	JDP2 Antibody
<b>Target</b>	JDP2
<b>Clonality</b>	Recombinant
<b>Species/Host</b>	Rabbit
<b>Isotype</b>	IgG
<b>Conjugation</b>	Unconjugated
<b>Reactivity</b>	Human, Mouse
<b>Form/Appearance</b>	Liquid
<b>Concentration</b>	400 µg/ml
<b>Buffer/Preservatives</b>	Borate Buffered Saline (BBS) pH 8.2 with 0.1% rAlbumin and 0.09% Sodium Azide
<b>Purification</b>	Purified
<b>Immunogen</b>	Between 50 and 100
<b>UniProt ID</b>	<b>Q8WYK2</b>
<b>Tested applications</b>	FC, ICC, IHC, WB

**Biorbyt Ltd.**

7 Signet Court, Swann Road  
Cambridge  
CB5 8LA  
United Kingdom

Email: [info@biorbyt.com](mailto:info@biorbyt.com), [support@biorbyt.com](mailto:support@biorbyt.com)

Phone: [+44 \(0\)1223 859353](tel:+44(0)1223859353) | Fax: [+1 \(415\) 651-8558](tel:+1(415)651-8558)

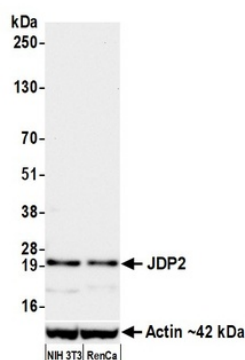
**Biorbyt LLC**

68 TW Alexander Drive  
Research Triangle Park  
Durham  
NC 27713  
United States

Email: [info@biorbyt.com](mailto:info@biorbyt.com), [support@biorbyt.com](mailto:support@biorbyt.com)

Phone: [+1 \(415\) 906-5211](tel:+1(415)906-5211) | Fax: [+1 \(415\) 651-8558](tel:+1(415)651-8558)

<b>Dilution range</b>	Application : Flow-Cyt , ApplicationDilutionRange : Fixed in 4% formaldehyde and permeabilized with 90% methanol. 1 µl per 1 x 10 <sup>6</sup> cells. , Application : ICC , ApplicationDilutionRange : 1:40 to 1:100. Epitope retrieval with Tris-EDTA pH 9.0 is recommended for FFPE cell sections. , Application : IHC , ApplicationDilutionRange : 1:40 to 1:100. Epitope retrieval with Tris-EDTA pH 9.0 is recommended for FFPE tissue sections. , Application : WB , ApplicationDilutionRange : 1:1000
<b>Application notes</b>	Format: Whole IgG
<b>Antibody Type</b>	Primary Antibody
<b>Clone Number</b>	BLR246L
<b>Storage</b>	Maintain refrigerated at 2-8°C for up to 2 weeks. For long term storage store at -20°C in small aliquots to prevent freeze-thaw cycles.
<b>Note</b>	For research use only
<b>NCBI</b>	<a href="#">NP_569736.1</a>
<b>Expiration Date</b>	12 months from date of receipt.



Detection of mouse JDP2 by western blot. Samples: Whole cell lysate (50 µg) from NIH 3T3 and RenCa cells prepared using NETN lysis buffer. Antibody: Rabbit anti-JDP2 recombinant monoclonal antibody (orb1733245) used at 1:1000. Secondary: HRP-conjugated goat anti-rabbit IgG. Detection: Chemiluminescence with an exposure time of 30 seconds. Lower Panel: Rabbit anti-Actin recombinant monoclonal antibody.

**Biorbyt Ltd.**

7 Signet Court, Swann Road  
Cambridge  
CB5 8LA  
United Kingdom

Email: [info@biorbyt.com](mailto:info@biorbyt.com), [support@biorbyt.com](mailto:support@biorbyt.com)

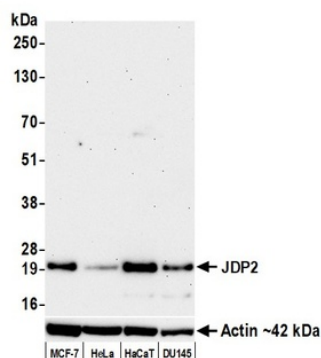
Phone: [+44 \(0\)1223 859353](tel:+44(0)1223859353) | Fax: [+1 \(415\) 651-8558](tel:+1(415)651-8558)

**Biorbyt LLC**

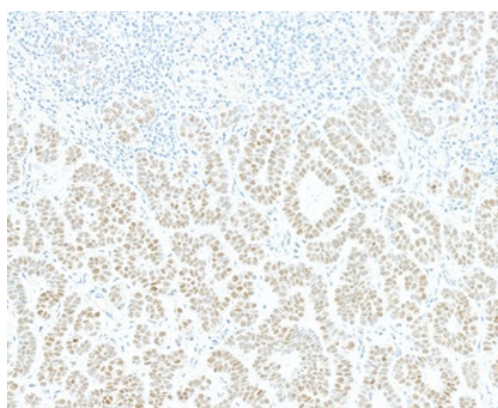
68 TW Alexander Drive  
Research Triangle Park  
Durham  
NC 27713  
United States

Email: [info@biorbyt.com](mailto:info@biorbyt.com), [support@biorbyt.com](mailto:support@biorbyt.com)

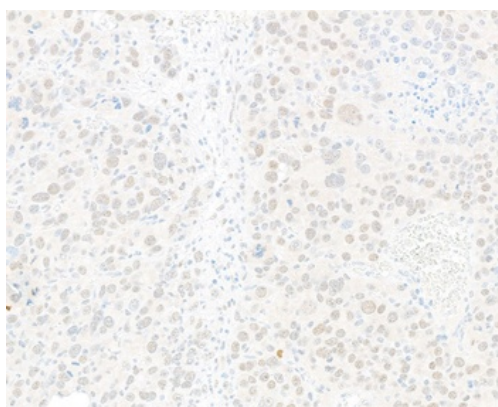
Phone: [+1 \(415\) 906-5211](tel:+1(415)906-5211) | Fax: [+1 \(415\) 651-8558](tel:+1(415)651-8558)



Detection of human JDP2 by western blot. Samples: Whole cell lysate (25  $\mu$ g) from MCF-7, HeLa, HaCaT, and DU145 cells prepared using NETN lysis buffer. Antibody: Rabbit anti-JDP2 recombinant monoclonal antibody (orb1733245) used at 1:1000. Secondary: HRP-conjugated goat anti-rabbit IgG. Detection: Chemiluminescence with an exposure time of 3 minutes. Lower Panel: Rabbit anti-Actin recombinant monoclonal antibody.



Detection of human JDP2 by immunohistochemistry. Sample: FFPE section of human skin carcinoma. Antibody: Rabbit anti-JDP2 recombinant monoclonal antibody (orb1733245). Secondary: HRP-conjugated goat anti-rabbit IgG.



Detection of mouse JDP2 by immunohistochemistry. Sample: FFPE section of mouse RenCa tumor. Antibody: Rabbit anti-JDP2 recombinant monoclonal antibody (orb1733245). Secondary: HRP-conjugated goat anti-rabbit IgG.

**Biorbyt Ltd.**

7 Signet Court, Swann Road  
Cambridge  
CB5 8LA  
United Kingdom

Email: [info@biorbyt.com](mailto:info@biorbyt.com), [support@biorbyt.com](mailto:support@biorbyt.com)

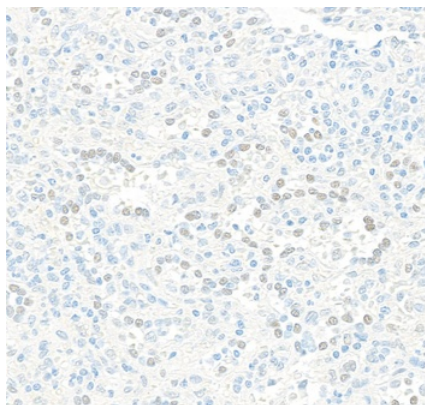
Phone: +44 (0)1223 859353 | Fax: +1 (415) 651-8558

**Biorbyt LLC**

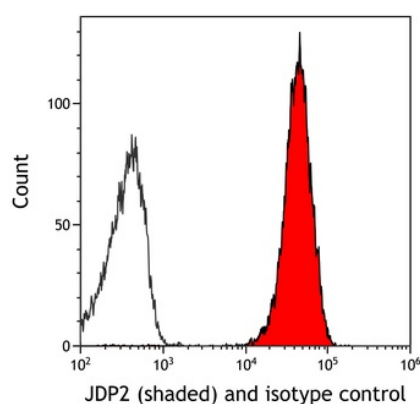
68 TW Alexander Drive  
Research Triangle Park  
Durham  
NC 27713  
United States

Email: [info@biorbyt.com](mailto:info@biorbyt.com), [support@biorbyt.com](mailto:support@biorbyt.com)

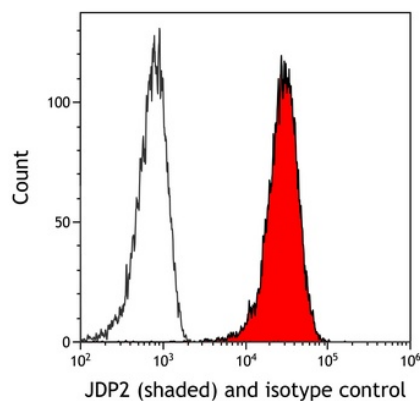
Phone: +1 (415) 906-5211 | Fax: +1 (415) 651-8558



Detection of human JDP2 by immunohistochemistry. Sample: FFPE section of human spleen. Antibody: Rabbit anti-JDP2 recombinant monoclonal antibody (orb1733245). Secondary: HRP-conjugated goat anti-rabbit IgG.



Detection of mouse JDP2 (shaded) in CTLL-2 cells by flow cytometry. Antibody: Rabbit anti-JDP2 recombinant monoclonal antibody (orb1733245) or isotype control (unshaded). Secondary: DyLight® 650-conjugated goat anti-rabbit IgG.



Detection of human JDP2 (shaded) in FaDu cells by flow cytometry. Antibody: Rabbit anti-JDP2 recombinant monoclonal antibody (orb1733245) or isotype control (unshaded). Secondary: DyLight® 650-conjugated goat anti-rabbit IgG.

**Biorbyt Ltd.**

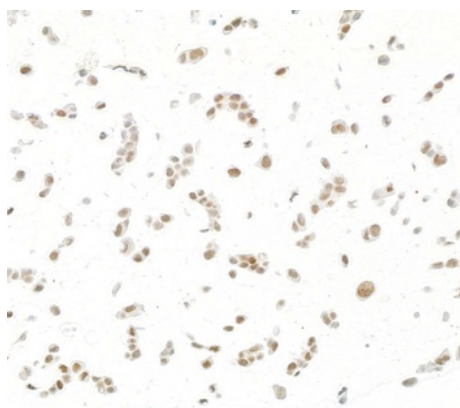
7 Signet Court, Swann Road  
Cambridge  
CB5 8LA  
United Kingdom

Email: [info@biorbyt.com](mailto:info@biorbyt.com), [support@biorbyt.com](mailto:support@biorbyt.com)  
Phone: +44 (0)1223 859353 | Fax: +1 (415) 651-8558

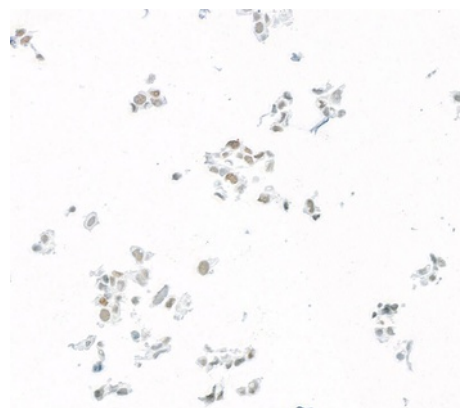
**Biorbyt LLC**

68 TW Alexander Drive  
Research Triangle Park  
Durham  
NC 27713  
United States

Email: [info@biorbyt.com](mailto:info@biorbyt.com), [support@biorbyt.com](mailto:support@biorbyt.com)  
Phone: +1 (415) 906-5211 | Fax: +1 (415) 651-8558



Detection of human JDP2 by immunocytochemistry. Sample: FFPE section of human FaDu cells. Antibody: Rabbit anti-JDP2 recombinant monoclonal antibody (orb1733245). Secondary: HRP-conjugated goat anti-rabbit IgG.



Detection of mouse JDP2 by immunocytochemistry. Sample: FFPE section of mouse C2C12 cells. Antibody: Rabbit anti-JDP2 recombinant monoclonal antibody (orb1733245). Secondary: HRP-conjugated goat anti-rabbit IgG.

**Biorbyt Ltd.**

7 Signet Court, Swann Road  
Cambridge  
CB5 8LA  
United Kingdom

Email: [info@biorbyt.com](mailto:info@biorbyt.com), [support@biorbyt.com](mailto:support@biorbyt.com)

Phone: [+44 \(0\)1223 859353](tel:+44(0)1223859353) | Fax: [+1 \(415\) 651-8558](tel:+1(415)651-8558)

**Biorbyt LLC**

68 TW Alexander Drive  
Research Triangle Park  
Durham  
NC 27713  
United States

Email: [info@biorbyt.com](mailto:info@biorbyt.com), [support@biorbyt.com](mailto:support@biorbyt.com)

Phone: [+1 \(415\) 906-5211](tel:+1(415)906-5211) | Fax: [+1 \(415\) 651-8558](tel:+1(415)651-8558)