

Product Datasheet

Rabbit NEDD-9/CASL/HEF1 Recombinant Monoclonal Antibody (orb1733240)

Catalog Number	orb1733240
Category	Antibodies
Description	NEDD-9/CASL/HEF1 Antibody
Target	NEDD-9/CASL/HEF1
Clonality	Recombinant
Species/Host	Rabbit
Isotype	IgG
Conjugation	Unconjugated
Reactivity	Human, Mouse
Form/Appearance	Liquid
Concentration	1000 µg/ml
Buffer/Preservatives	Borate Buffered Saline (BBS) pH 8.2 with 0.09% Sodium Azide, rAlbumin-Free
Purification	Purified
Immunogen	Between 150 and 200
UniProt ID	Q14511
Tested applications	IP, WB

Biorbyt Ltd.

7 Signet Court, Swann Road
Cambridge
CB5 8LA
United Kingdom

Email: info@biorbyt.com, support@biorbyt.com

Phone: [+44 \(0\)1223 859353](tel:+44(0)1223859353) | Fax: [+1 \(415\) 651-8558](tel:+1(415)651-8558)

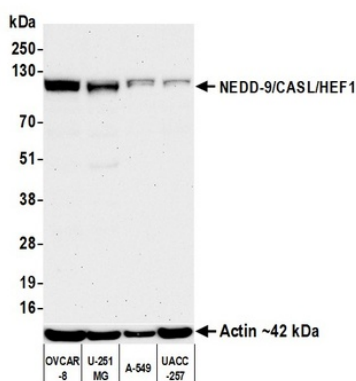
Biorbyt LLC

68 TW Alexander Drive
Research Triangle Park
Durham
NC 27713
United States

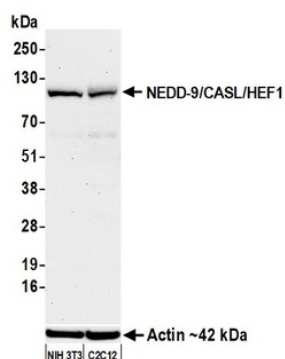
Email: info@biorbyt.com, support@biorbyt.com

Phone: [+1 \(415\) 906-5211](tel:+1(415)906-5211) | Fax: [+1 \(415\) 651-8558](tel:+1(415)651-8558)

Dilution range	Application : IP , ApplicationDilutionRange : 6 µl/mg lysate , Application : WB , ApplicationDilutionRange : 1:1000
Application notes	Format: Whole IgG
Antibody Type	Primary Antibody
Clone Number	BLR248L
Storage	Maintain refrigerated at 2-8°C for up to 2 weeks. For long term storage store at -20°C in small aliquots to prevent freeze-thaw cycles.
Note	For research use only
NCBI	NP_892011.2
Expiration Date	12 months from date of receipt.



Detection of human NEDD-9/CASL/HEF1 by western blot. Samples: Whole cell lysate (50 µg) from OVCAR-8, U-251MG, A-549, and UACC-257 cells prepared using NETN lysis buffer. Antibody: Rabbit anti-NEDD-9/CASL/HEF1 recombinant monoclonal antibody (orb1733240) used at 1:1000. Secondary: HRP-conjugated goat anti-rabbit IgG. Detection: Chemiluminescence with an exposure time of 3 minutes. Lower Panel: Rabbit anti-Actin recombinant monoclonal antibody.



Detection of mouse NEDD-9/CASL/HEF1 by western blot. Samples: Whole cell lysate (50 µg) from NIH 3T3 and C2C12 cells prepared using NETN lysis buffer. Antibody: Rabbit anti-NEDD-9/CASL/HEF1 recombinant monoclonal antibody (orb1733240) used at 1:1000. Secondary: HRP-conjugated goat anti-rabbit IgG. Detection: Chemiluminescence with an exposure time of 3 minutes. Lower Panel: Rabbit anti-Actin recombinant monoclonal antibody.

Biorbyt Ltd.

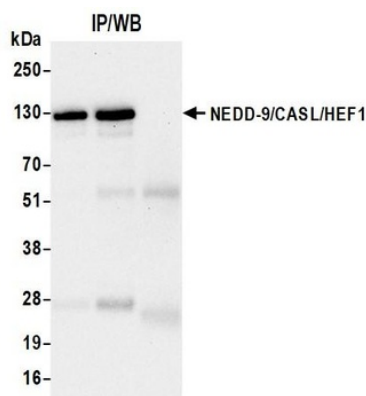
7 Signet Court, Swann Road
Cambridge
CB5 8LA
United Kingdom

Email: info@biorbyt.com, support@biorbyt.com
Phone: +44 (0)1223 859353 | Fax: +1 (415) 651-8558

Biorbyt LLC

68 TW Alexander Drive
Research Triangle Park
Durham
NC 27713
United States

Email: info@biorbyt.com, support@biorbyt.com
Phone: +1 (415) 906-5211 | Fax: +1 (415) 651-8558



Detection of human NEDD-9/CASL/HEF1 by western blot of immunoprecipitates. Samples: Whole cell lysate (1.0 mg per IP reaction; 20% of IP loaded) from OVCAR-8 cells prepared using NETN lysis buffer. Antibodies: Rabbit anti-NEDD-9/CASL/HEF1 recombinant monoclonal antibody (orb1733240) used for IP at 6 μ l/mg lysate.

Biorbyt Ltd.

7 Signet Court, Swann Road
Cambridge
CB5 8LA
United Kingdom

Email: info@biorbyt.com, support@biorbyt.com
Phone: [+44 \(0\)1223 859353](tel:+44(0)1223859353) | Fax: [+1 \(415\) 651-8558](tel:+1(415)651-8558)

Biorbyt LLC

68 TW Alexander Drive
Research Triangle Park
Durham
NC 27713
United States

Email: info@biorbyt.com, support@biorbyt.com
Phone: [+1 \(415\) 906-5211](tel:+1(415)906-5211) | Fax: [+1 \(415\) 651-8558](tel:+1(415)651-8558)