

Product Datasheet

Adenylate kinase 4 Rabbit mAb [KD Validated] Antibody (orb1726693)

Catalog Number	orb1726693
Category	Antibodies
Description	Catalyzes the reversible transfer of the terminal phosphate group between ATP and AMP. May also be active with GTP.
Clonality	Monoclonal
Species/Host	Rabbit
Isotype	Rabbit IgG
Conjugation	Unconjugated
Reactivity	Human
Form/Appearance	Rabbit IgG in phosphate buffered saline , pH 7.4, 150mM NaCl, 0.02% sodium azide and 50% glycerol.
Purification	Affinity-chromatography
Immunogen	A synthesized peptide derived from human Adenylate kinase 4
UniProt ID	P27144
MW	25kDa
Tested applications	ICC, IHC, WB
Dilution range	WB:1:500~1:2000IHC:1:50~1:200ICC/IF:1:50~1:200

Biorbyt Ltd.

7 Signet Court, Swann Road
Cambridge
CB5 8LA
United Kingdom

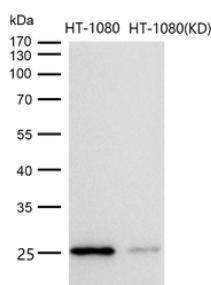
Email: info@biorbyt.com, support@biorbyt.com
Phone: [+44 \(0\)1223 859353](tel:+44(0)1223859353) | Fax: [+1 \(415\) 651-8558](tel:+1(415)651-8558)

Biorbyt LLC

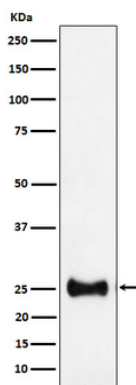
68 TW Alexander Drive
Research Triangle Park
Durham
NC 27713
United States

Email: info@biorbyt.com, support@biorbyt.com
Phone: [+1 \(415\) 906-5211](tel:+1(415)906-5211) | Fax: [+1 \(415\) 651-8558](tel:+1(415)651-8558)

Specificity	Adenylate kinase 4 Antibody detects endogenous levels of total Adenylate kinase 4
Antibody Type	Recombinant Antibody
Source	Recombinant Rabbit
Storage	Maintain refrigerated at 2-8°C for up to 2 weeks. For long term storage store at -20°C in small aliquots to prevent freeze-thaw cycles.
Note	For research use only
Expiration Date	12 months from date of receipt.



All lanes use the Antibody at 1:1K dilution for 1 hour at room temperature.



Western blot analysis of Adenylate kinase 4 expression in HepG2 cell lysate.

Biorbyt Ltd.

7 Signet Court, Swann Road
Cambridge
CB5 8LA
United Kingdom

Email: info@biorbyt.com, support@biorbyt.com

Phone: +44 (0)1223 859353 | Fax: +1 (415) 651-8558

Biorbyt LLC

68 TW Alexander Drive
Research Triangle Park
Durham
NC 27713
United States

Email: info@biorbyt.com, support@biorbyt.com

Phone: +1 (415) 906-5211 | Fax: +1 (415) 651-8558