

Product Datasheet

Pan Cytokeratin Antibody (PE Conjugate) (orb1716114)

Catalog Number	orb1716114
Category	Antibodies
Description	<p>Twenty human keratins are resolved with two-dimensional gel electrophoresis into acidic (pI 6.0) subfamilies. This antibody cocktail recognizes acidic (Type I or LMW) and basic (Type II or HMW) cytokeratins, which include CK1, CK3, CK4, CK5, CK6, CK8, CK10, CK14, CK15, CK16, and CK19. Many studies have shown the usefulness of keratins as markers in cancer research and tumor diagnosis. This MAb is a broad spectrum anti pan-cytokeratin antibody cocktail, which differentiates epithelial tumors from non-epithelial tumors e.g. squamous vs. adenocarcinoma of the lung, liver carcinoma, breast cancer, and esophageal cancer. It has been used to characterize the source of various neoplasms and to study the distribution of cytokeratin containing cells in epithelia during normal development and during the development of epithelial neoplasms. This antibody stains cytokeratins present in normal and abnormal human tissues and has shown high sensitivity in the recognition of epithelial cells and carcinomas.</p>
Clonality	Monoclonal
Species/Host	Mouse
Isotype	Mouse IgG1, kappa
Conjugation	PE
Reactivity	Human
Buffer/Preservatives	0.2 mg/ml in 1X PBS with 0.1 mg/ml rAlbumin, 0.05% sodium azide
Purification	Protein A/G affinity

Biorbyt Ltd.

7 Signet Court, Swann Road
Cambridge
CB5 8LA
United Kingdom

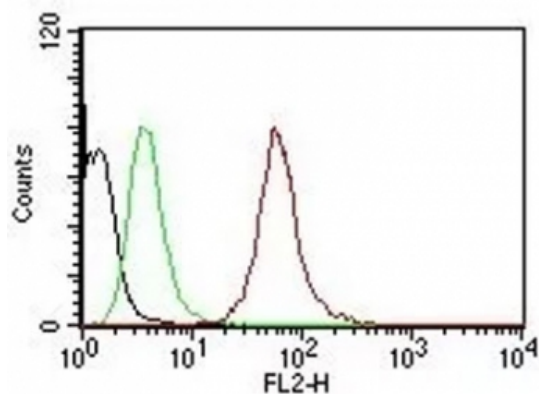
Email: info@biorbyt.com, support@biorbyt.com
Phone: [+44 \(0\)1223 859353](tel:+44(0)1223859353) | Fax: [+1 \(415\) 651-8558](tel:+1(415)651-8558)

Biorbyt LLC

68 TW Alexander Drive
Research Triangle Park
Durham
NC 27713
United States

Email: info@biorbyt.com, support@biorbyt.com
Phone: [+1 \(415\) 906-5211](tel:+1(415)906-5211) | Fax: [+1 \(415\) 651-8558](tel:+1(415)651-8558)

Immunogen	Human epidermal keratin was used as the immunogen for the Pan Cytokeratin antibody.
UniProt ID	Q7Z794, Q01546
Tested applications	FACS, IF
Dilution range	Flow cytometry: 5ul per test per one million cells or 5ul per 100ul of whole blood, Immunofluorescence: 1:50-1:100
Application notes	Optimal dilution of the PE-conjugated Pan Cytokeratin antibody should be determined by the researcher.
Antibody Type	Primary Antibody
Clone Number	SPM115 + SPM116
Storage	Store the PE-conjugated Pan Cytokeratin antibody in the dark at 2-8°C (do not freeze; conjugate is light sensitive).
Note	For research use only
Expiration Date	12 months from date of receipt.



Flow Cytometric analysis of human Pan-Cytokeratins on HeLa cells. Black: cells alone; Green: Isotype Control; Red: PE-labeled Pan-Cytokeratin Monoclonal antibody (clone SPM115 + SPM116).

Biorbyt Ltd.

7 Signet Court, Swann Road
Cambridge
CB5 8LA
United Kingdom

Email: info@biorbyt.com, support@biorbyt.com
Phone: +44 (0)1223 859353 | Fax: +1 (415) 651-8558

Biorbyt LLC

68 TW Alexander Drive
Research Triangle Park
Durham
NC 27713
United States

Email: info@biorbyt.com, support@biorbyt.com
Phone: +1 (415) 906-5211 | Fax: +1 (415) 651-8558