

Product Datasheet

Rabbit KLF4 Recombinant Monoclonal Antibody (orb1710839)

Catalog Number	orb1710839
Category	Antibodies
Description	KLF4 Antibody
Target	KLF4
Clonality	Recombinant
Species/Host	Rabbit
Isotype	IgG
Conjugation	Unconjugated
Reactivity	Human, Mouse
Form/Appearance	Liquid
Concentration	1000 µg/ml
Buffer/Preservatives	Borate Buffered Saline (BBS) pH 8.2 with 0.09% Sodium Azide, rAlbumin-Free
Purification	Purified
Immunogen	Between 75 and 125
UniProt ID	O43474
Tested applications	ICC, IHC, IP, WB

Biorbyt Ltd.

7 Signet Court, Swann Road
Cambridge
CB5 8LA
United Kingdom

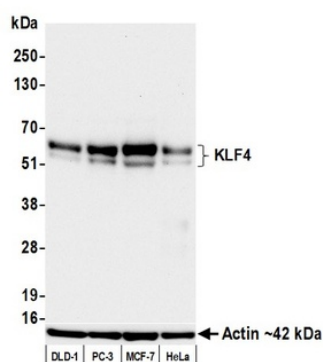
Email: info@biorbyt.com, support@biorbyt.com
Phone: [+44 \(0\)1223 859353](tel:+44(0)1223859353) | Fax: [+1 \(415\) 651-8558](tel:+1(415)651-8558)

Biorbyt LLC

68 TW Alexander Drive
Research Triangle Park
Durham
NC 27713
United States

Email: info@biorbyt.com, support@biorbyt.com
Phone: [+1 \(415\) 906-5211](tel:+1(415)906-5211) | Fax: [+1 \(415\) 651-8558](tel:+1(415)651-8558)

Dilution range	WB: 1:1,000, IP: 6 µl/1 mg lysate, IHC: 1:100 to 1:500. Epitope retrieval with citrate buffer pH6.0 is recommended for FFPE tissue sections., ICC: 1:100 to 1:500. Epitope retrieval with citrate buffer pH6.0 is recommended for FFPE cell sections.
Application notes	Format: Whole IgG
Antibody Type	Primary Antibody
Clone Number	BLR250L
Storage	Maintain refrigerated at 2-8°C for up to 2 weeks. For long term storage store at -20°C in small aliquots to prevent freeze-thaw cycles.
Note	For research use only
NCBI	NP_004226.3
Expiration Date	12 months from date of receipt.



Detection of human KLF4 by western blot. Samples: Whole cell lysate (25 µg) from DLD-1, PC-3, MCF-7, and HeLa cells prepared using NETN lysis buffer. Antibody: Rabbit anti-KLF4 recombinant monoclonal antibody (orb1710839) used at 1:1000. Secondary: HRP-conjugated goat anti-rabbit IgG. Detection: Chemiluminescence with an exposure time of 30 seconds. Lower Panel: Rabbit anti-Actin recombinant monoclonal antibody.

Biorbyt Ltd.

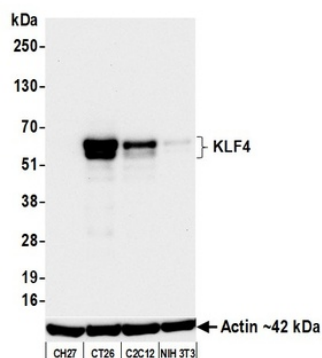
7 Signet Court, Swann Road
Cambridge
CB5 8LA
United Kingdom

Email: info@biorbyt.com, support@biorbyt.com
Phone: +44 (0)1223 859353 | Fax: +1 (415) 651-8558

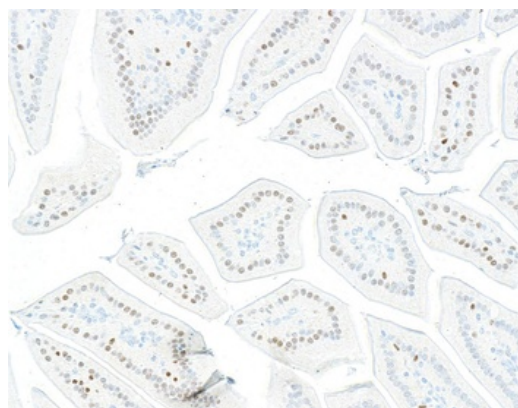
Biorbyt LLC

68 TW Alexander Drive
Research Triangle Park
Durham
NC 27713
United States

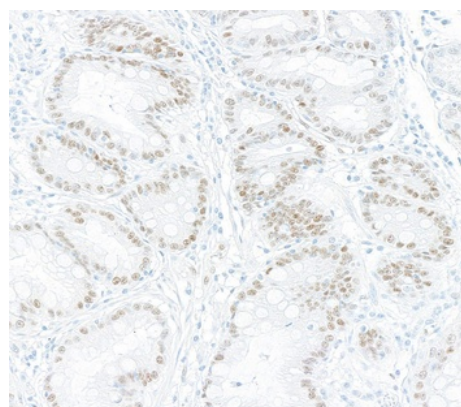
Email: info@biorbyt.com, support@biorbyt.com
Phone: +1 (415) 906-5211 | Fax: +1 (415) 651-8558



Detection of mouse KLF4 by western blot. Samples: Whole cell lysate (25 µg) from CH27, CT26, C2C12, and NIH 3T3 cells prepared using NETN lysis buffer. Antibody: Rabbit anti-KLF4 recombinant monoclonal antibody (orb1710839) used at 1:1000. Secondary: HRP-conjugated goat anti-rabbit IgG. Detection: Chemiluminescence with an exposure time of 30 seconds. Lower Panel: Rabbit anti-Actin recombinant monoclonal antibody.



Detection of mouse KLF4 by immunohistochemistry. Sample: FFPE section of mouse gut. Antibody: Rabbit anti-KLF4 recombinant monoclonal antibody (orb1710839). Secondary: HRP-conjugated goat anti-rabbit IgG.



Detection of human KLF4 by immunohistochemistry. Sample: FFPE section of human gastric carcinoma. Antibody: Rabbit anti-KLF4 recombinant monoclonal antibody (orb1710839). Secondary: HRP-conjugated goat anti-rabbit IgG.

Biorbyt Ltd.

7 Signet Court, Swann Road
Cambridge
CB5 8LA
United Kingdom

Email: info@biorbyt.com, support@biorbyt.com

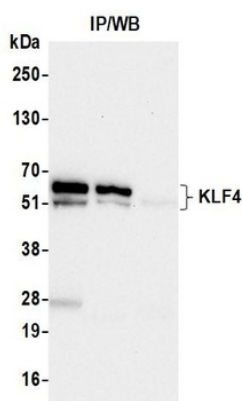
Phone: +44 (0)1223 859353 | Fax: +1 (415) 651-8558

Biorbyt LLC

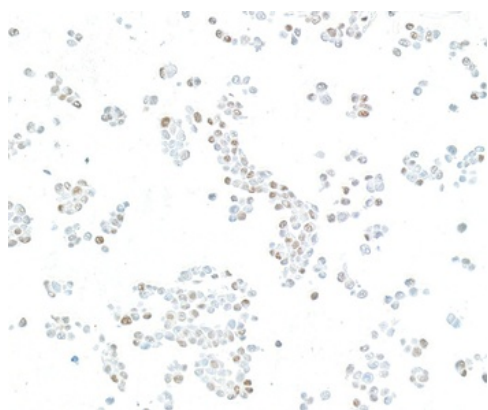
68 TW Alexander Drive
Research Triangle Park
Durham
NC 27713
United States

Email: info@biorbyt.com, support@biorbyt.com

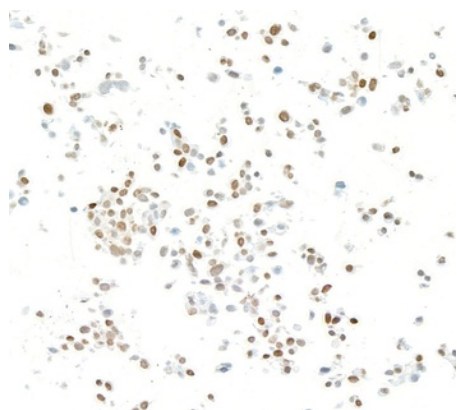
Phone: +1 (415) 906-5211 | Fax: +1 (415) 651-8558



Detection of human KLF4 by western blot of immunoprecipitates. Samples: Whole cell lysate (1.0 mg per IP reaction; 20% of IP loaded) from MCF-7 cells prepared using NETN lysis buffer. Antibodies: Rabbit anti-KLF4 recombinant monoclonal antibody (orb1710839) used for IP at 6 μ l/mg lysate.



Detection of human KLF4 by immunocytochemistry. Sample: FFPE section of HCT 116 cells. Antibody: Rabbit anti-KLF4 recombinant monoclonal antibody (orb1710839). Secondary: HRP-conjugated goat anti-rabbit IgG.



Detection of mouse KLF4 by immunocytochemistry. Sample: FFPE section of CT26 cells. Antibody: Rabbit anti-KLF4 recombinant monoclonal antibody (orb1710839). Secondary: HRP-conjugated goat anti-rabbit IgG.

Biorbyt Ltd.

7 Signet Court, Swann Road
Cambridge
CB5 8LA
United Kingdom

Email: info@biorbyt.com, support@biorbyt.com
Phone: +44 (0)1223 859353 | Fax: +1 (415) 651-8558

Biorbyt LLC

68 TW Alexander Drive
Research Triangle Park
Durham
NC 27713
United States

Email: info@biorbyt.com, support@biorbyt.com
Phone: +1 (415) 906-5211 | Fax: +1 (415) 651-8558